

LG IPS234(Digital) @ 0, 0, 1920x1080 — 2023-07-09 13:02:49

Evaluation criteria: RGB

View raw reference data

View raw measurement data

Evaluate gray balance through calibration only: ☐

Use blackbody locus as assumed target whitepoint: ☐

Show additional statistics: ☐

Show values as: L*a*b*

Use absolute values: ☐

Use display profile whitepoint as reference white: ☐

Color distance metric: ΔE*00

▼ Basic Information

Device:	LG IPS234(Digital) @ 0. 0. 1920x1080
Instrument:	i1 DisplayPro, ColorMunki Display — LCD (общий)
Correction:	Xrite i1 DisplayPro LG IPS234 (GretagMacbeth i1 Pro).cmx
Display profile:	IPS234 #1 2023-07-09 11:58 D6500 2.2 M-S XYZLUT+MTX
Display profile luminance:	74.7 cd/m²
Display profile whitepoint:	xy 0.3446 0.3481 (XYZ 99 100 88.31), CCT 5008K
Measured luminance:	74.8 cd/m²
Assumed target whitepoint:	xy 0.3443 0.3473 (XYZ 99.15 100 88.81), CCT 5015K
Measured target whitepoint:	5000K daylight, xy 0.3457 0.3587 (XYZ 96.4 100 82.41)
Measured black luminance:	0.1029 cd/m²
Contrast:	727.1:1
Testchart:	verify_extended.t11
Simulation profile:	None
Gamma mapping:	N/A
Whitepoint simulation:	N/A
Chromatic adaptation:	Bradford
Devicelink profile:	None
Evaluation criteria:	RGB
Date:	2023-07-09 13:02:49

▼ Summary

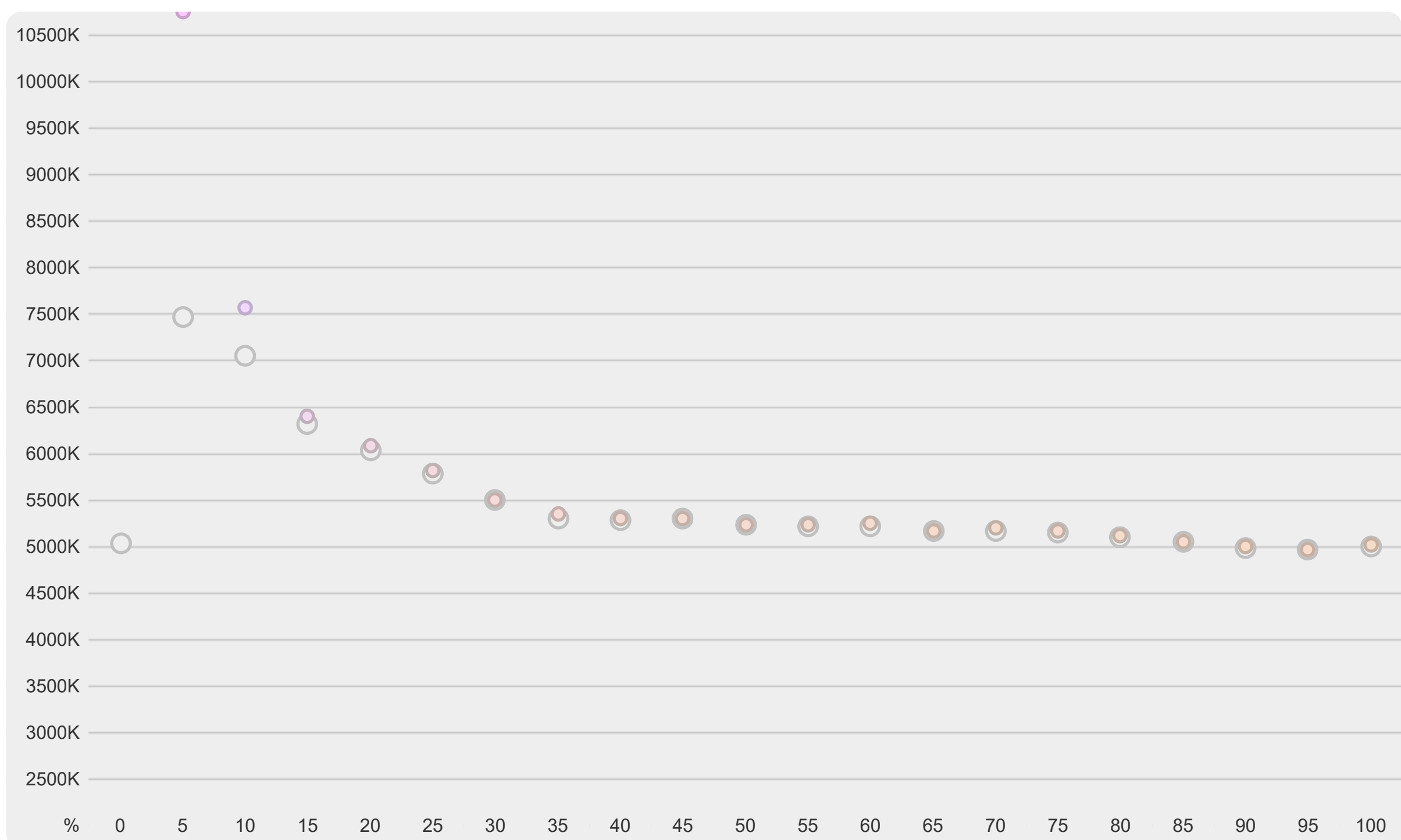
Criteria	Nominal	Recommended	#	Actual	Result
Measured vs. assumed target whitepoint ΔE*00	<= 2	<= 1		7.27	NOT OK ✖
Measured vs. display profile whitepoint ΔE*00		<= 1		0.53	
Average ΔE*00	<= 1.5	<= 1		0.5	OK ✔✔
Maximum ΔE*00	<= 4	<= 3	02	7.4	NOT OK ✖

✖ Nominal tolerance exceeded

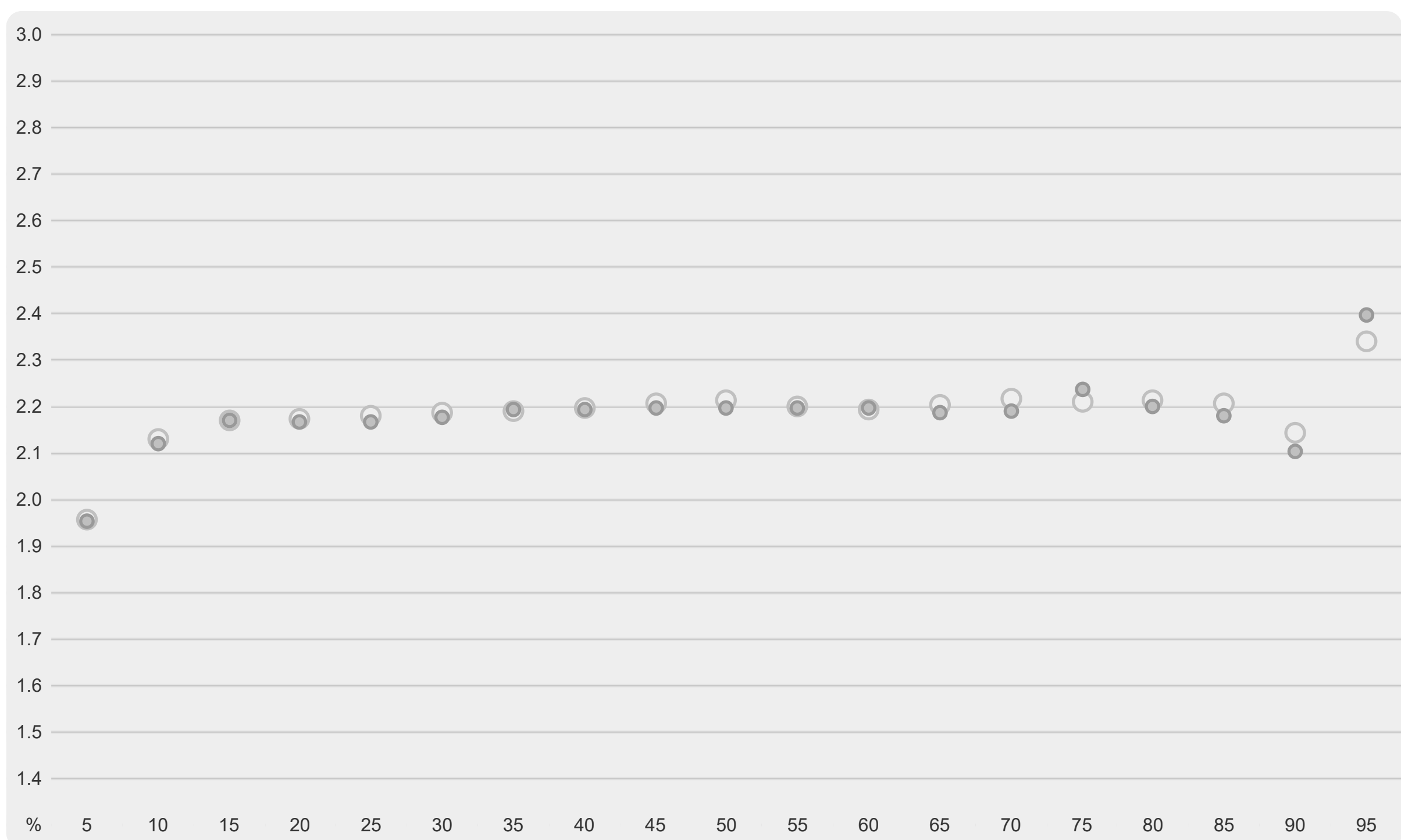
▼ Overview

#	Nominal Values						Measured Values						Color distance			
	R	G	B	L*	a*	b*	γ	L*	a*	b*	γ	ΔL* _{00/w}	ΔC* _{00/w}	ΔH* _{00/w}	ΔE ₀₀	
01	255	255	255	100	0	0		100	0	0		0	0	0	0	
02	0	0	0	1.23	-0.01	0		1.22	2.99	-7.66		0	7.38	0.59	7.4	
03	13	13	13	2.57	1.04	-2.8	1.96	2.6	2.71	-7.1	1.95	0.02	3.96	0.05	3.96	
04	26	26	26	6.68	1.38	-5.45	2.13	6.87	1.57	-6.23	2.12	0.11	0.65	-0.02	0.66	
05	38	38	38	13.39	1.31	-5.32	2.17	13.39	1.47	-5.55	2.17	0.01	0.23	0.13	0.27	
06	51	51	51	20.15	1.13	-5.33	2.17	20.25	1.12	-5.42	2.17	0.07	0.06	-0.05	0.1	
07	64	64	64	26.36	0.78	-4.76	2.18	26.59	0.63	-4.78	2.17	0.17	-0.02	-0.21	0.27	
08	77	77	77	32.25	0.75	-3.82	2.19	32.43	0.82	-3.89	2.18	0.15	0.08	0.08	0.18	
09	89	89	89	37.9	0.78	-3	2.19	37.83	0.7	-3.18	2.19	-0.06	0.11	-0.17	0.21	
10	102	102	102	43.29	0.34	-2.67	2.2	43.37	-0.02	-2.33	2.19	0.07	-0.35	-0.49	0.6	
11	115	115	115	48.49	0.07	-2.76	2.21	48.63	-0.07	-2.57	2.2	0.13	-0.17	-0.21	0.3	
12	128	128	128	53.56	0.24	-2.55	2.21	53.82	0.26	-2.37	2.2	0.24	-0.16	0.07	0.3	
13	140	140	140	58.83	0.02	-2.24	2.2	58.88	-0.12	-2.33	2.2	0.04	0.09	-0.19	0.22	
14	153	153	153	63.83	-0.06	-2.29	2.19	63.82	-0.29	-2.45	2.2	-0.01	0.17	-0.33	0.37	
15	166	166	166	68.55	-0.04	-2	2.2	68.73	0.09	-1.98	2.19	0.14	-0.02	0.2	0.24	
16	179	179	179	73.12	0.07	-2.22	2.22	73.41	-0.44	-1.92	2.19	0.22	-0.17	-0.78	0.83	
17	191	191	191	77.86	0.2	-2.1	2.21	77.6	0.03	-2.02	2.24	-0.18	-0.09	-0.25	0.32	
18	204	204	204	82.38	0.79	-2.03	2.21	82.49	0.27	-1.64	2.2	0.07	-0.61	-0.57	0.84	
19	217	217	217	86.93	0.69	-1.37	2.21	87.08	0.66	-1.3	2.18	0.1	-0.07	0.01	0.12	
20	230	230	230	91.59	0.49	-0.09	2.14	91.74	0.16	0.15	2.1	0.09	-0.44	0.31	0.55	
21	242	242	242	95.45	0.98	-0.26	2.34	95.34	1.04	-0.33	2.4	-0.06	0.1	-0.05	0.13	
22	128	0	0	25.69	48.99	27.91		25.73	48.95	27.73		0.03	-0.03	-0.08	0.09	
23	255	0	0	70.7	103.36	76.19		71.15	103.14	76.7		0.35	0.02	0.22	0.42	
24	255	128	128	65.38	48.88	14.91		65.41	48.37	14.89		0.02	-0.15	0.07	0.17	
25	0	128	0	48.62	-36.13	40.47		48.75	-36.1	40.57		0.12	0.02	-0.04	0.13	
26	0	255	0	91.32	-60.66	66.95		91.31	-60.89	67.01		-0.01	0.04	0.05	0.06	
27	128	255	128	91.89	-53.09	40.13		91.9	-53.66	39.92		0.01	0.08	0.21	0.23	
28	0	0	128	8.88	48.14	-69.49		9	48.34	-69.93		0.07	0.1	-0.05	0.14	
29	0	0	255	24.43	77.03	-112.93		24.46	77.02	-112.94		0.02	0	-0.01	0.02	
30	128	128	255	57.04	23.3	-61.11		57.14	23.84	-61.22		0.09	0.08	0.34	0.31	
31	0	128	128	55.07	-22.28	-7.32		50.13	-21.95	-7.72		0.06	-0.12	0.35	0.37	
32	0	255	255	93.01	-38.24	-9.82		92.99	-38.45	-9.67		-0.02	0.06	-0.12	0.14	
33	170	255	255	94.74	-27.69	-7.66		94.68	-27.49	-8.16		-0.03	-0.03	0.37	0.38	
34	128	0	128	27.53	59.31	-39.6		28.01	59.7	-38.77		0.36	-0.03	0.4	0.54	
35	255	0	255	54.05	96.43	-64.12		54	96.28	-64.21		-0.05	-0.01	-0.05	0.07	
36	255	170	255	78.14	39.63	-29.01		78.12	39.49	-28.81		-0.02	-0.07	0.04	0.09	
37	128	128	0	52.54	-9.75	45.22		52.61	-9.22	45.21		0.07	-0.04	-0.34	0.35	
38	255	255	0	98.29	-14.45	75.3		98.25	-14.52	75.32		-0.02	0.01	0.04	0.04	
39	255	255	170	99.02	-7.86	33.09		99.19	-8.26	33.32		0.1	0.13	0.25	0.3	
40	170	85	85	45.65	38.99	11.18		45.49	38.02	11.01		-0.15	-0.35	0.06	0.39	
41	85	170	85	64.47	-38.12	29.57		64.54	-39.3	29.9		0.06	0.35	0.23	0.42	
42	85	85	170	38.45	19.39	-47.76		38.51	18.6	-47.39		0.05	-0.19	-0.47	0.38	
43	85	170	170	65.72	-26.47	-8.3		65.62	-27.26	-8.25		-0.08	0.34	-0.2	0.4	
44	170	85	170	47.56	47.88	-32.86		47.33	47.6	-33.57		-0.22	0.05	-0.37	0.44	
45	170	170	85	69.08	-8.25	35.95		69.13	-8.4	35.99		0.04	0.03	0.1	0.11	
46	255	0	170	52	86.67	-24.15		51.92	86.65	-24.62		-0.08	-0.02	-0.17	0.19	
47	170	255	0	93.34	-46.56	69.07		93.29	-46.67	69.01		-0.03	0	0.05	0.06	
48	0	170	255	67.53	-9.3	-45.42		67.63	-9.58	-45.04		0.08	-0.1	-0.2	0.18	
49	0	255	170	92.08	-50.69	24.26		91.96	-50.82	23.91		-0.07	-0.01	0.18	0.19	
50	170	0	255	41.71	87.14	-84.81		40.95	87.26	-86.34		-0.68	0.18	-0.39	0.81	
51	255	170	0	75.23	23.12	63.51		75.34	22.45	63.64		0.08	-0.03	0.43	0.43	

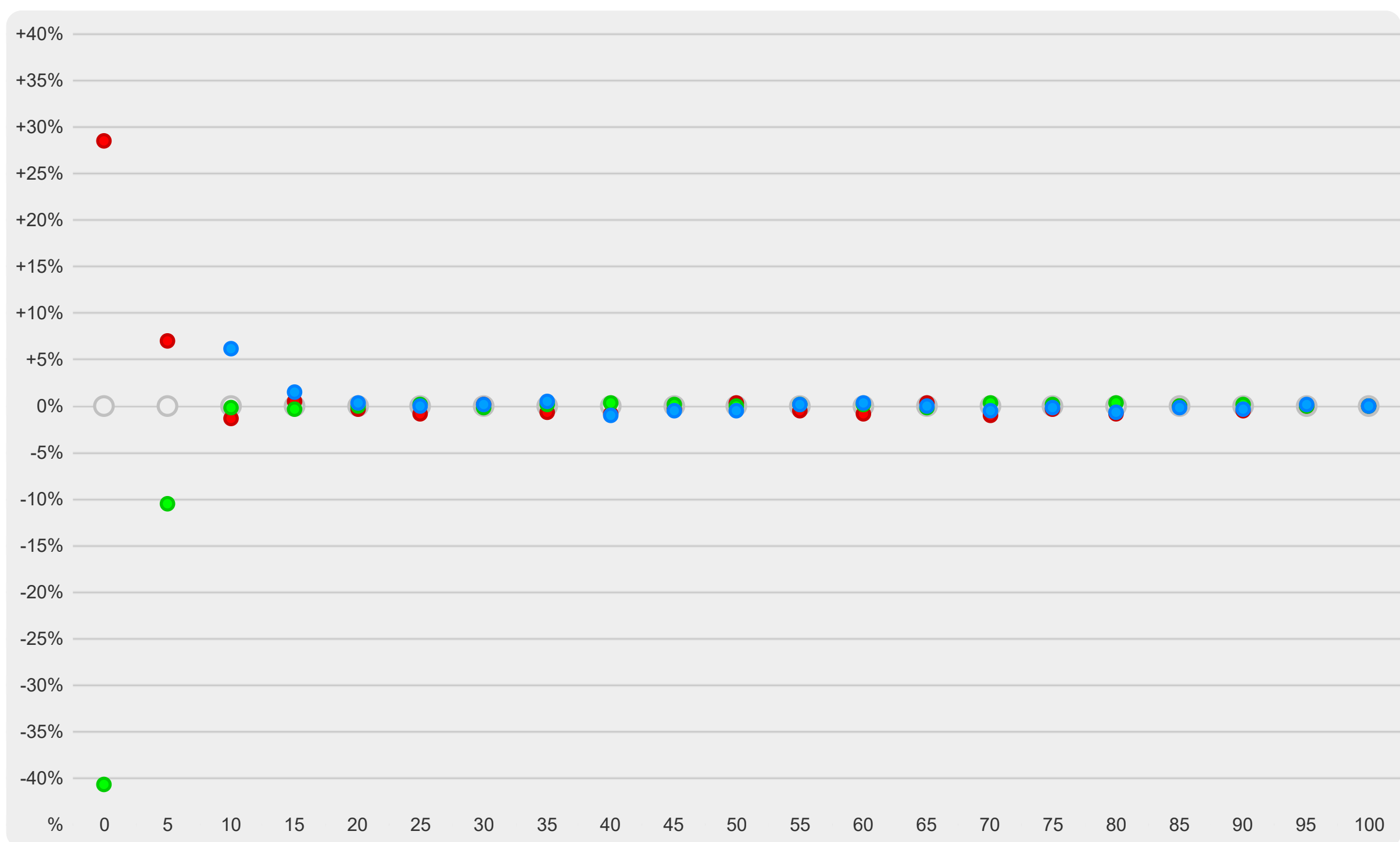
▼ Correlated Color Temperature



▼ Gamma



▼ RGB Gray Balance



▼ Gamut a*b*

