

LG IPS234(Digital) @ 0, 0, 1920x1080 — 2023-07-09 13:19:00

Evaluation criteria: RGB

View raw reference data

View raw measurement data

Evaluate gray balance through calibration only: ☐

Use blackbody locus as assumed target whitepoint: ☐

Show additional statistics: ☐

Show values as: L*a*b*

Use absolute values: ☐

Use display profile whitepoint as reference white: ☐

Color distance metric: ΔE*00

▼ Basic Information

Device:	LG IPS234(Digital) @ 0. 0. 1920x1080
Instrument:	i1 DisplayPro, ColorMunki Display — LCD (общий)
Correction:	Xrite i1 DisplayPro LG IPS234 (GretagMacbeth i1 Pro).cmx
Display profile:	IPS234_11-03-2023.icm
Display profile luminance:	72.9 cd/m²
Display profile whitepoint:	xy 0.2998 0.3162 (XYZ 94.82 100 121.47), CCT 7432K
Measured luminance:	75.1 cd/m²
Assumed whitepoint:	xy 0.3351 0.3351 (XYZ 100.02 100 98.44), CCT 5374K
Assumed target whitepoint:	5400K daylight, xy 0.3349 0.3497 (XYZ 95.77 100 90.17)
Measured black luminance:	0.1019 cd/m²
Contrast:	737.7:1
Testchart:	verify_extended.t11
Simulation profile:	None
Gamma mapping:	N/A
Whitepoint simulation:	N/A
Chromatic adaptation:	Bradford
Devicelink profile:	None
Evaluation criteria:	RGB
Date:	2023-07-09 13:19:00

▼ Summary

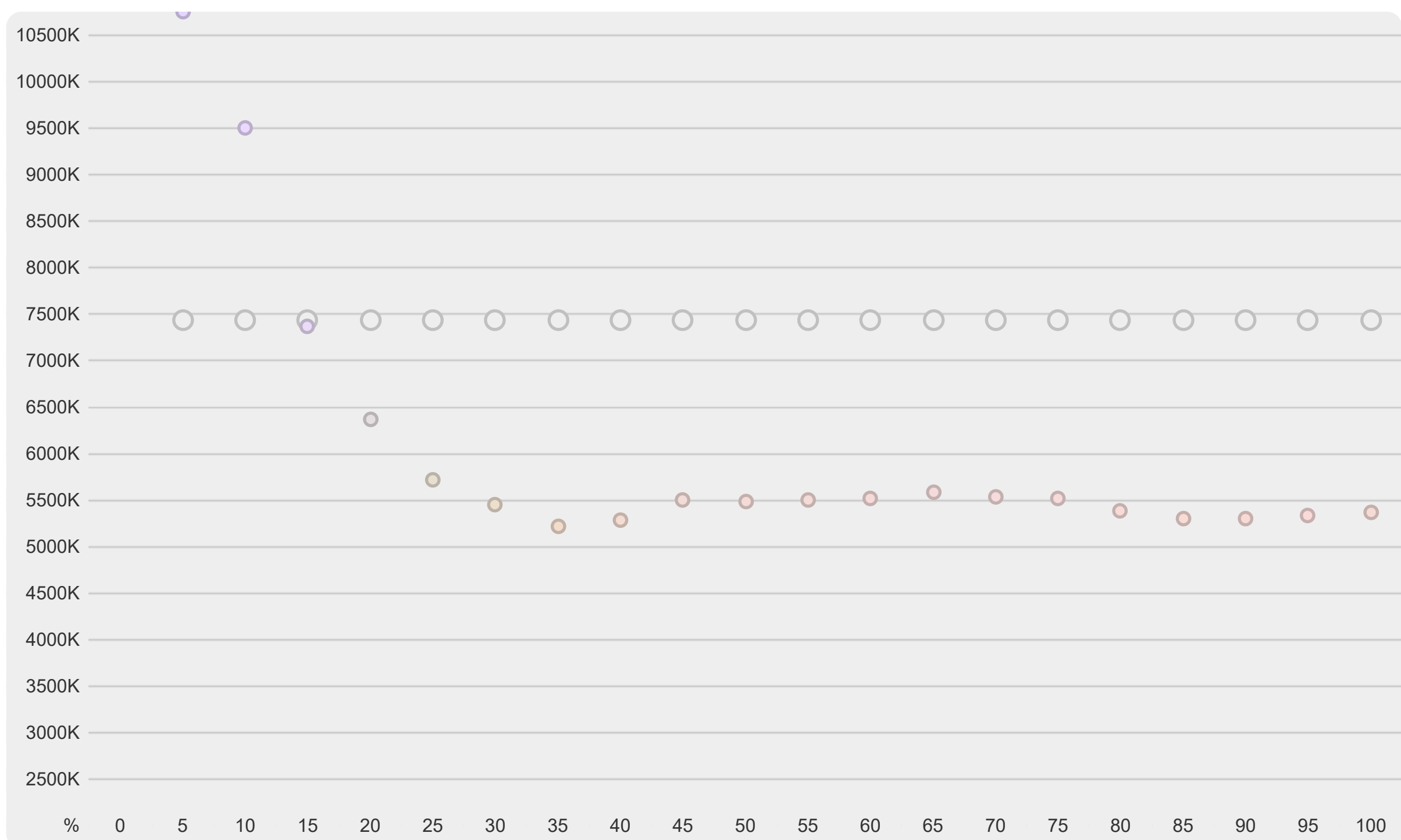
Criteria	Nominal	Recommended	#	Actual	Result
Measured vs. assumed target whitepoint ΔE*00	<= 2	<= 1		9.71	NOT OK ✗
Measured vs. display profile whitepoint ΔE*00		<= 1		13.33	
Average ΔE*00	<= 1.5	<= 1		4.08	NOT OK ✗
Maximum ΔE*00	<= 4	<= 3	23	17.57	NOT OK ✗

✗ Nominal tolerance exceeded

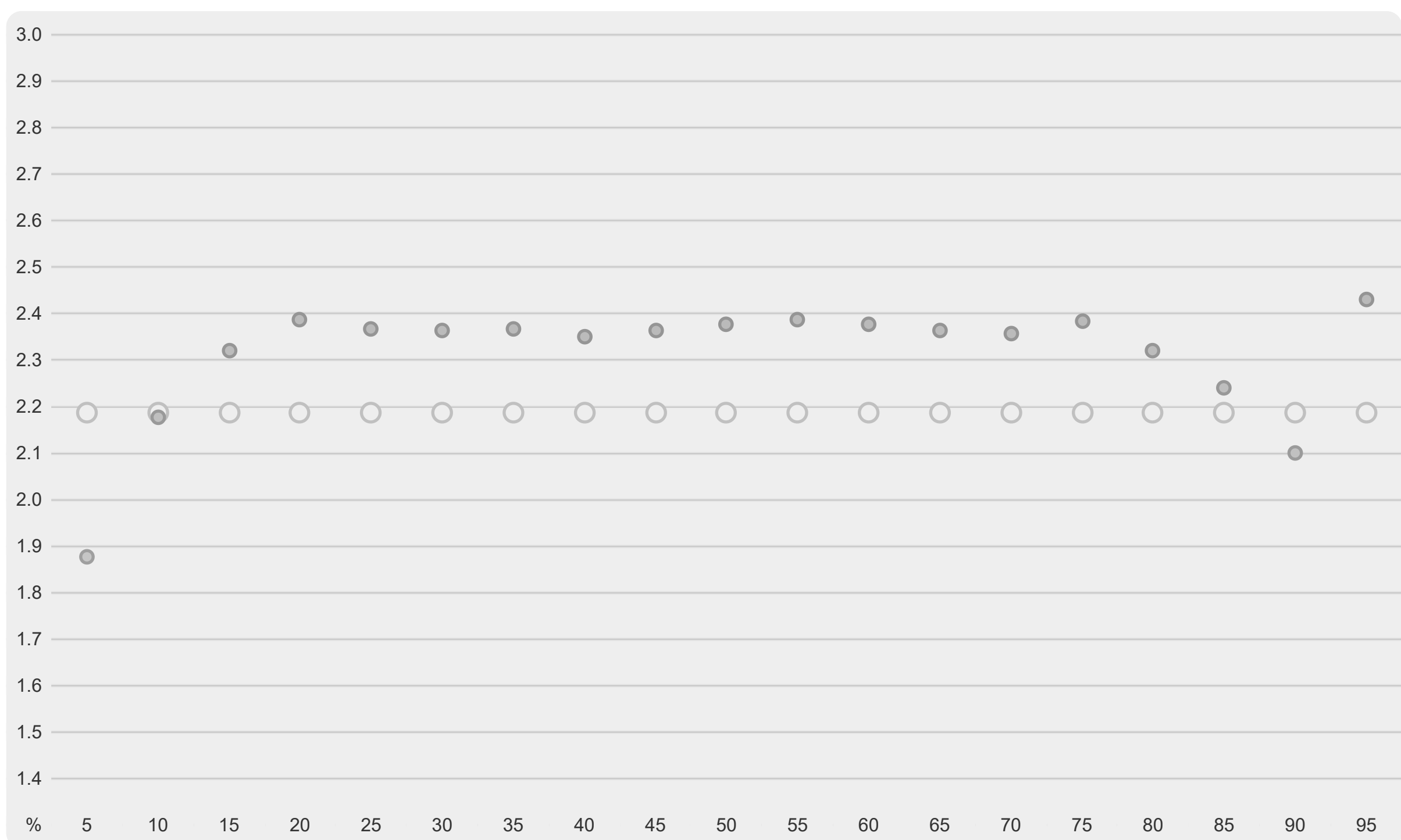
▼ Overview

#	Nominal Values						Measured Values						Color distance			
	R	G	B	L*	a*	b*	γ	L*	a*	b*	γ	ΔL* _{00/w}	ΔC* _{00/w}	ΔH* _{00/w}	ΔE ₅₀	
01 255 255 255	255	255	255	100	0.01	-0.02		100	0	0		0	-0.03	0	0.03	
02 0 0 0	0	0	0	0	0	0		1.19	2.71	-6.56		0.68	6.58	0	6.61	
03 13 13 13	13	13	13	1.29	0	0	2.19	3.27	1.15	-5.52	1.88	1.16	5.11	0	5.24	
04 26 26 26	26	26	26	5.87	0	0	2.19	5.99	1.1	-5.97	2.18	0.08	5.43	-0.01	5.44	
05 38 38 38	38	38	38	13.09	0	-0.01	2.19	10.74	0.33	-4.69	2.32	-1.5	4.26	-0.03	4.51	
06 51 51 51	51	51	51	19.87	0	-0.01	2.19	16.23	-1.55	-2.17	2.39	-2.47	2.96	-0.16	3.86	
07 64 64 64	64	64	64	26.21	0	-0.01	2.19	22.83	-2.94	0.78	2.37	-2.46	4.06	-0.33	4.76	
08 77 77 77	77	77	77	32.22	0	-0.01	2.19	28.96	-2.54	1.7	2.36	-2.54	3.8	-0.37	4.58	
09 89 89 89	89	89	89	37.95	0	-0.01	2.19	34.64	-1.46	2.3	2.37	-2.77	2.96	-0.37	4.07	
10 102 102 102	102	102	102	43.47	0	-0.01	2.19	40.56	-0.9	1.36	2.35	-2.63	1.82	-0.3	3.21	
11 115 115 115	115	115	115	48.8	0	-0.01	2.19	45.81	-0.55	-0.48	2.36	-2.93	0.92	-0.14	3.07	
12 128 128 128	128	128	128	53.98	0	-0.01	2.19	51.01	-0.14	-0.79	2.38	-2.92	0.79	-0.06	3.02	
13 140 140 140	140	140	140	59.01	0	-0.02	2.19	56.09	-0.15	-0.9	2.39	-2.67	0.89	-0.07	2.81	
14 153 153 153	153	153	153	63.93	0	-0.02	2.19	61.39	0.45	-1.62	2.38	-2.15	1.67	0.02	2.72	
15 166 166 166	166	166	166	68.73	0	-0.02	2.19	66.63	0.48	-2.36	2.36	-1.67	2.32	0	2.86	
16 179 179 179	179	179	179	73.43	0	-0.02	2.19	71.67	0.81	-2.34	2.36	-1.32	2.47	0.04	2.81	
17 191 191 191	191	191	191	78.05	0	-0.02	2.19	76.31	0.83	-2.21	2.38	-1.24	2.38	0.05	2.69	
18 204 204 204	204	204	204	82.58	0	-0.02	2.19	81.6	1.21	-1.18	2.32	-0.66	2.04	0.14	2.15	
19 217 217 217	217	217	217	87.04	0	-0.02	2.19	86.75	0.97	0.08	2.24	-0.19	1.39	0.22	1.42	
20 230 230 230	230	230	230	91.42	0	-0.02	2.19	91.75	1.63	-0.48	2.1	0.2	2.34	0.24	2.36	
21 242 242 242	242	242	242	95.74	0	-0.02	2.19	95.28	3.06	-2.08	2.43	-0.28	4.5	0.28	4.52	
22 128 0 0	24.73	50.08	37.89					24.37	47.29	27.76		-0.26	-2.18	-4.09	4.64	
23 255 0 0	51.51	83.02	68.35					71.36	103.47	79.78		17.11	3.64	-1.65	17.57	
24 255 128 128	67.53	48.68	21.4					63.55	49.92	18.54		-3.26	0.02	-1.8	3.72	
25 0 128 0	47.95	-43	29.34					46.03	-34.36	40.6		-1.87	0.33	-6.81	7.06	
26 0 255 0	90.01	-71.27	48.64					91.24	-61.6	74.01		0.77	1.96	-8.81	9.08	
27 128 255 128	92.36	-50.66	33					91.87	-55.08	45.11		-0.3	2.71	-3.01	4.06	
28 0 0 128	7.85	46.99	-65.22					8.83	42.85	-64.06		0.6	-0.73	-1.65	1.74	
29 0 0 255	23.54	77.9	-108.12					24.79	80.04	-115.13		0.91	0.97	-1.07	1.84	
30 128 128 255	57.12	25.1	-55.98					54.7	28.42	-66.93		-2.26	2.83	-0.96	4.14	
31 0 128 128	49.04	-28.59	-7.97					47.41	-21.31	-5.57		-1.62	-3.71	-0.3	4.06	
32 0 255 255	91.81	-47.39	-13.21					92.98	-37.41	-9.95		0.72	-3.53	-0.32	3.61	
33 170 255 255	95.33	-24.82	-7.53					94.5	-27.84	-8.27		-0.5	1.44	-0.11	1.53	
34 128 0 128	27.29	59.19	-32.42					26.36	57.04	-34.89		-0.69	-0.16	-1.41	1.58	
35 255 0 255	55.76	98.13	-53.74					53.89	97.04	-66.68		-1.78	0.95	-3.71	4.23	
36 255 170 255	79.11	40.29	-23.44					76.66	42.36	-32.59		-1.73	2.1	-3.41	4.39	
37 128 128 0	53.04	-8.82	36.9					49.87	-8.8	45.72		-3.15	2.97	-1.27	4.51	
38 255 255 0	98.45	-14.62	61.16					97.88	-15.55	82.22		-0.33	4.84	-1.9	5.21	
39 255 255 170	99.09	-8.39	29.97					98.94	-8.52	35.82		-0.09	2.25	-0.97	2.45	
40 170 85 85	46.15	36.22	15.93					43.33	39.21	17.85		-2.66	1.23	0.34	2.95	
41 85 170 85	64.63	-37.69	24.55					62.45	-39.69	35.3		-1.83	2.53	-3.62	4.78	
42 85 85 170	36.4	18.67	-41.65					35.62	20.42	-49.94		-2.35	2.56	-1.3	4.2	
43 85 170 170	65.63	-25.8	-7.54					63.7	-25.53	-9.04		-1.59	0.06	1.06	1.92	
44 170 85 170	47.82	45.82	-26.06					45.38	49.9	-33.93		-2.37	2.15	-2.22	3.91	
45 170 170 85	69.41	-8.38	31.9					67.11	-8.61	41.79		-1.81	3.58	-1.42	4.28	
46 255 0 170	53.33	89.67	-13.75					51.51	86.1	-22.78		-1.78	-0.33	-3.25	3.73	
47 170 255 0	93.64	-43.67	54.06					93.05	-48.65	75.99		-0.36	4.51	-3.57	5.76	
48 0 170 255	66.06	-14.74	-44.88					65.98	-5.61	-49.05		-0.06	0.67	5.39	5.02	
49 0 255 170	90.76	-60.86	16.92					92.05	-50.66	26.49		0.8	-1.62	-5.85	6.12	
50 170 0 255	41.34	85.65	-77.91					40.67	88.03	-88.62		-0.6	1.42	-2.35	2.89	
51 255 170 0	76.77	23.62	56.57					73.58	23.75	68.18		-2.33	2.72	2.52	4.38	

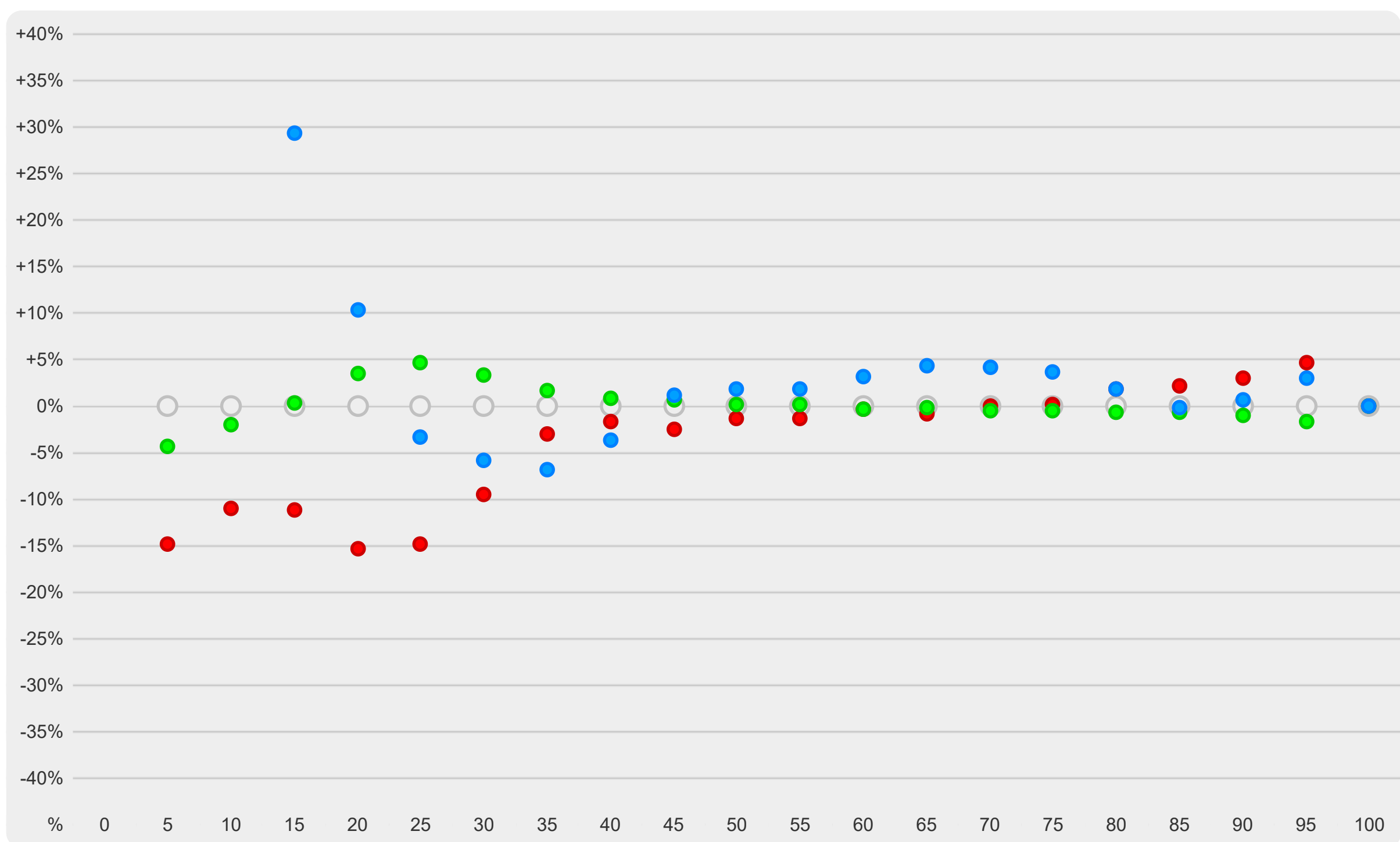
▼ Correlated Color Temperature



▼ Gamma



▼ RGB Gray Balance



▼ Gamut a*b*

