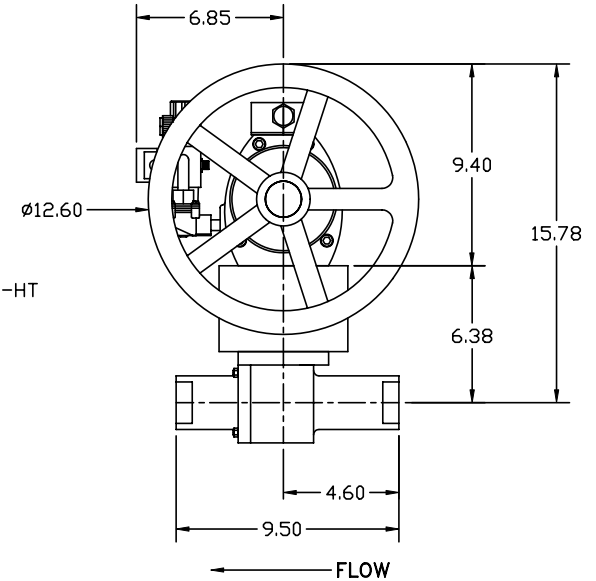
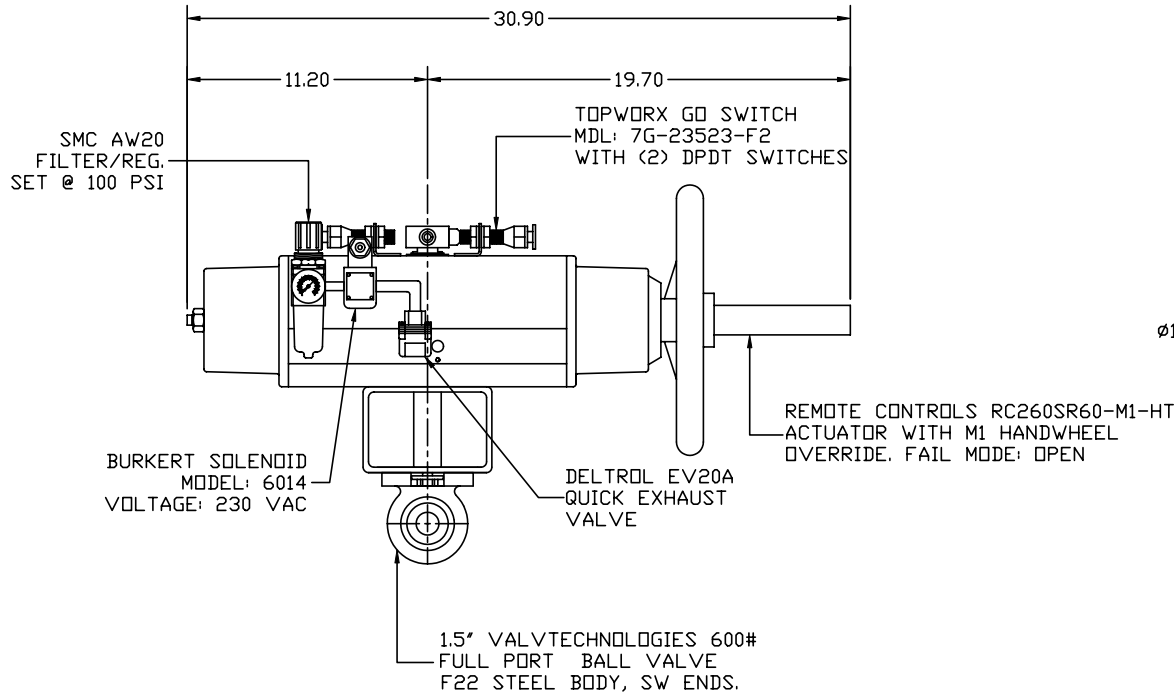


TAG#S: 387A1581P001 / RHCY



APPROXIMATE ASSEMBLY WEIGHT: 105 LBS.

GE Power Generation		GENERAL ELECTRIC COMPANY Schenectady, NY	
DT- <u>VENDOR SUPPLIED DRAWING</u>			
GE NOT TO REVISE. GE REVISION LEVEL IS AS SHOWN ON THIS APPLIQUE. THIS DOCUMENT IS FILED UNDER THE GE DRAWING NUMBER			
THIS DOCUMENT SHALL BE REVISED IN ITS ENTIRETY. ALL SHEETS OF THIS DOCUMENT ARE THE SAME REVISION LEVEL AS INDICATED IN THIS VENDOR SUPPLIED DRAWING APPLIQUE.			
FIRST MADE FOR:		SHEET 1 of 1	
GE SIGNATURES	DATE	GE DRAWING NUMBER	REV.
		266B2939	
1.5' 600# VALVTECHNOLOGIES/ RC260SR60-M1-HT TOPWORX GO SWITCH / BURKERT / SMC / DELTROL			
SCALE:	NONE	APPROVED BY:	DRAWN BY: CW
DATE:	03/03/08		REVISED
NCC		NOONEY CONTROLS CORPORATION	
		P.O. Box 375, 466 Dry Bridge Rd., North Kingstown, R.I. 02852	
PRODUCTION SERVICES PO# B43431861 SO# 02080098		DRAWING NUMBER	REV
		DNE21073	-