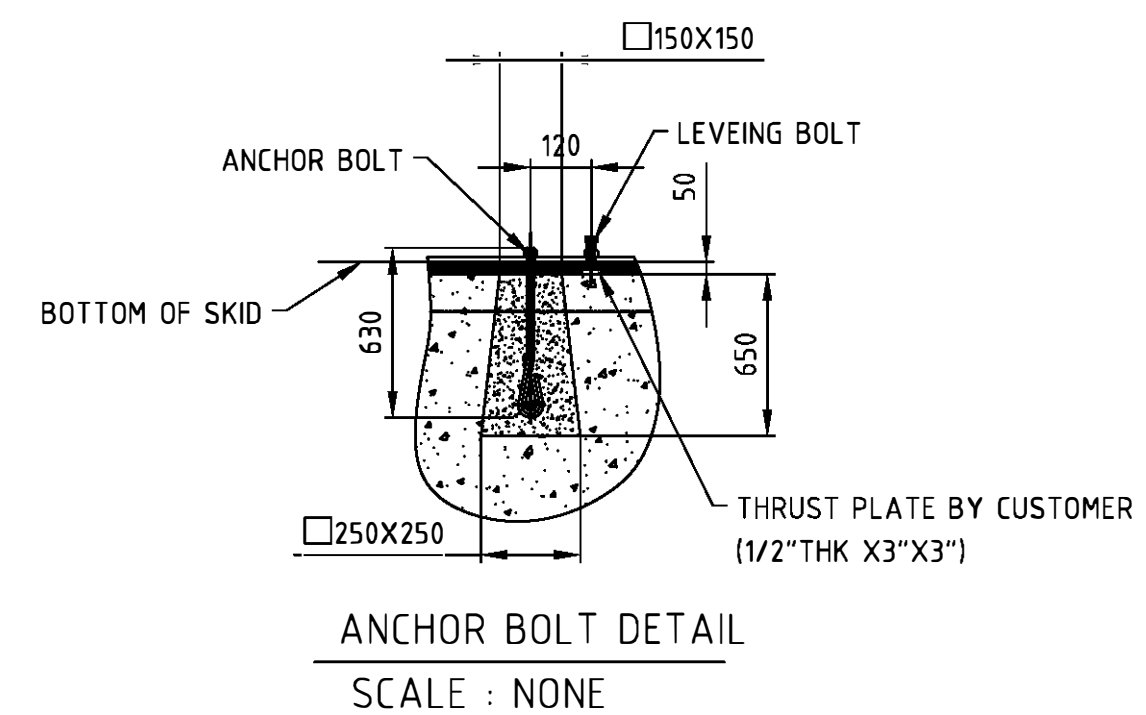
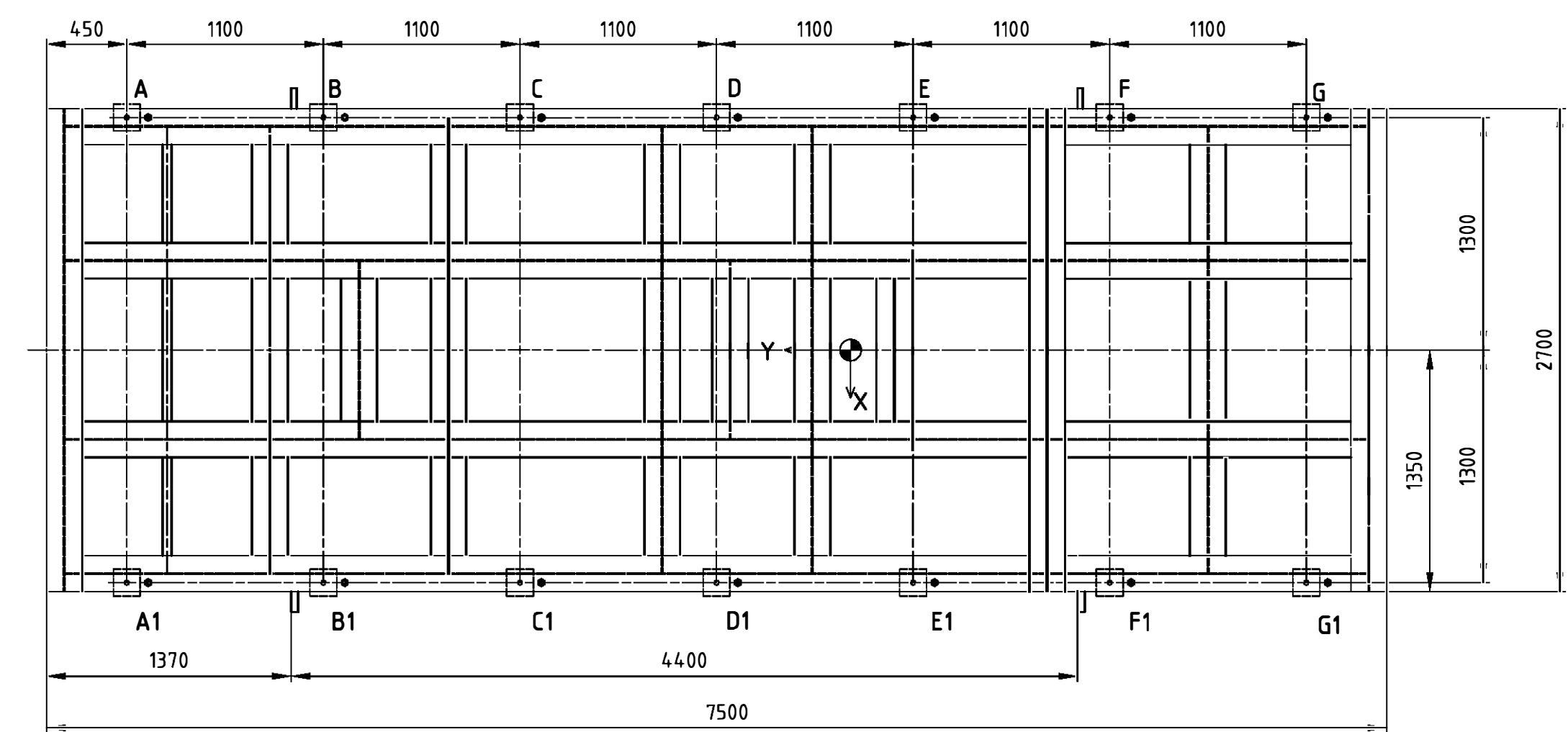


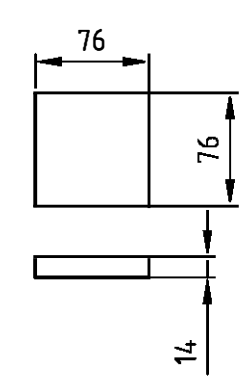
	Dynamic loading			Static loading(N•m
	Fx(N)	Fy(N)	Fz(N)±	
A1	1	3.4	19.25	160N•m
B1	4.4	6	26	160N•m
C1	8	12	41	160N•m
D1	6.5	26.8	102	160N•m
E1	18	34	-214	160N•m
F1	27	16	-52	160N•m
G1	24	7.4	-30	160N•m
A	1	3.4	19.25	160N•m
B	4.4	6	26	160N•m
C	8	12	41	160N•m
D	6.5	26.8	102	160N•m
E	18	34	-214	160N•m
F	27	16	-52	160N•m
G	24	7.4	-30	160N•m

NOTE:Static loading just include locking force




Compressor Inertial Force & Couple

	Force (KN)	Couple (KNM)
Primary Vertical	0	0.813
Primary Horizontal	0.094	0.465
Secondary Vertical	0	0
Вторая горизонтальная	0.017	0.233



THRUST PLATE (MATERIAL:SA-203 Gr.D)
SCALE : 1:5

					Dynamic loadings drawing						
						STAGE MARKED			MASS	SCALE	
									3200	1:30	
ITEM	O. N	CTFN	SGT	DATE		TOTAL			PAGE	SECTION PAG	
DRN			CAL								
REW											
CHK											
TOP			APP								
						REV		QTY			

 山东科瑞压缩机有限公司
SHANDONG KERUI COMPRESSOR Co.,