

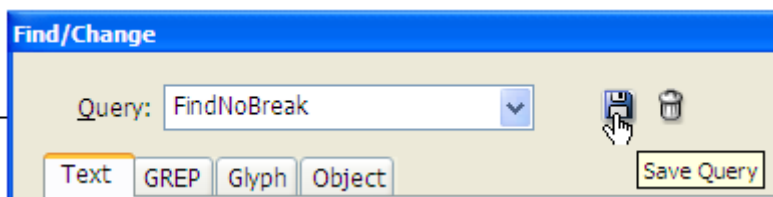
## DoQueryList — Program to processing text using queries

This script is for:

- keep sequence of executing text- and grep-queries, holds in default InDesign folders;
  - collect both type of queries and list of these queries to process text on this computer or another one;
  - execute gathered queries in accordance with the kept sequence list on this or another computer without loading the queries in default InDesign folders. *Instead of loading all user queries to InDesign folders the script places current user query in default folder, execute it and then delete.*
- By this reason user must have an administrative right to write in default InDesign folders where queries are kept.

### Queries — useful experience of text processing

Using various queries for text processing — is customary in makeup. And when you have a lot of queries for all instances, know right sequence for its fulfillment, it help you to do job quickly. So we would to have ability to make ready queries, test its an save for next execution, and InDesign give us such ability:



Icon ‘diskette’ — it is a tool for save a ready for using query under its own name.

InDesign keeps queries in *program folders* and *user folders*. It is default folders for queries.

Program folder for grep-queries is

C:\Program Files\Adobe\Adobe InDesign CS5.5\Presets\Find-Change Queries\Grep\en\_US\  
while

C:\Program Files\Adobe\Adobe InDesign CS5.5\Presets\Find-Change Queries\Text\en\_US\  
is for text ones.

User grep-queries are placed in

~\Adobe\InDesign\Version 7.5\en\_US\Find-Change Queries\GREP\.

Instructions for text processing are here:

~\Adobe\InDesign\Version 7.5\en\_US\Find-Change Queries\Text\

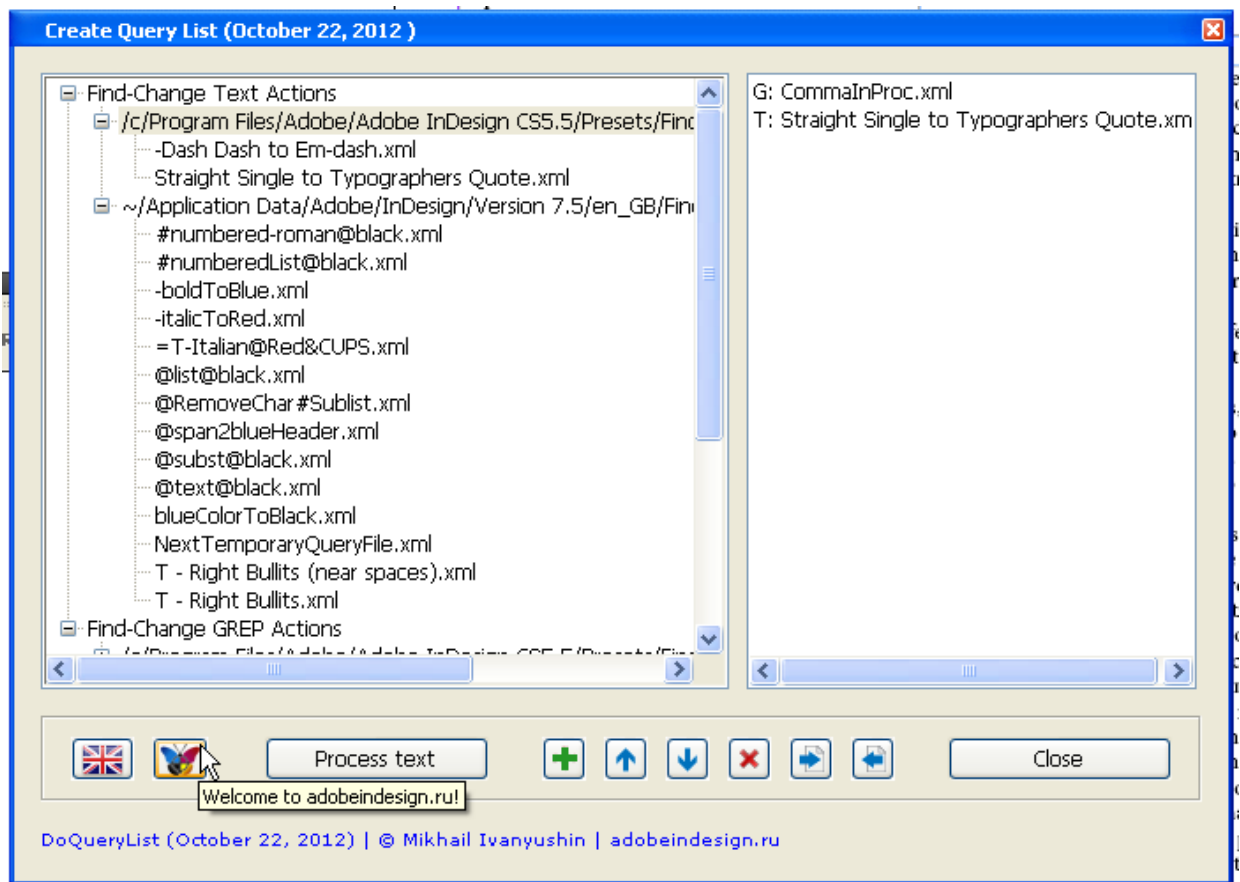
Here ‘~’ is instead of path to user folder.

On Mac and Windows views of user folder paths are not the same.

But there is no tool to keep a sequence of carrying-out queries, and this problem may be solved by this script.

## Script DoQueryList is for text processing by queries

Main window looks so:



The directories with queries roll up/unroll in left window. Select line with the query in left window and double click or push on '+' button, and this instruction will be repeated in right window. Names of grep-queries started with "G:" while names of text ones — with 'T:'.

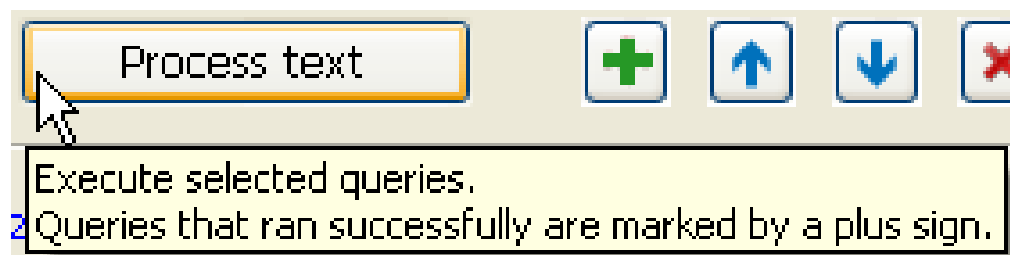
To move in right window selected line up and down the buttons with arrows are used.

Double click on selected line in right window removes it from list. Another way to remove instruction — using 'red cross' button. This button deletes all selected lines too.

### Queries processing

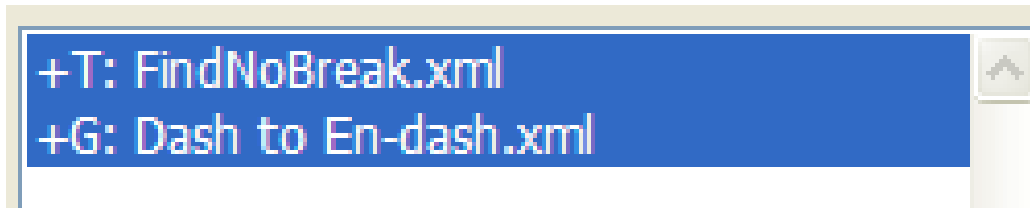
Button 'Process text' is for processing text by selected queries.

*Not all queries in right window will be executed but selected ones only.*



Selected text is processed or a whole story if nothing selected.

If query successfully done, a '+' sign is placed in front of line with its name.

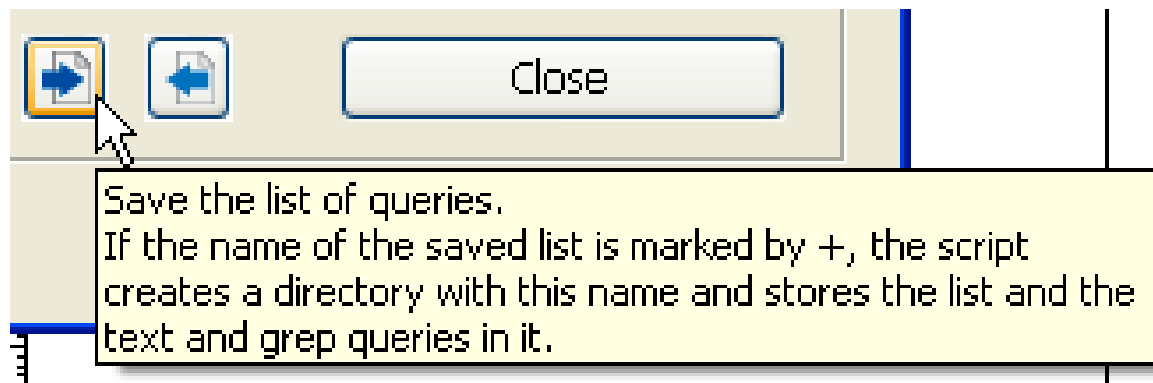


Click on 'red cross' button removes these pluses. Also its disappear after any action with queries (repeat action, add, remove etc.).

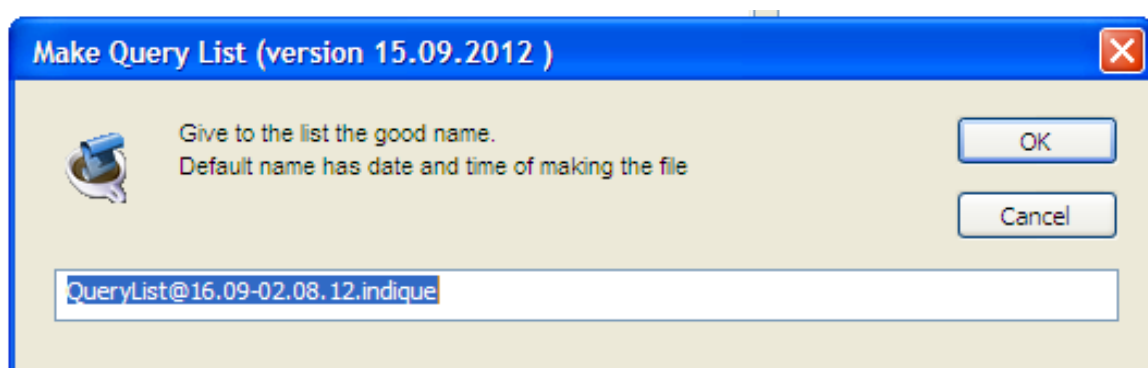
### Working with lists and queries

User must have right to create folders and write files in the folder there this script is placed and in default InDesign folders for queries.

#### *Saving a list*



After click on 'save' button the prompt is shown:

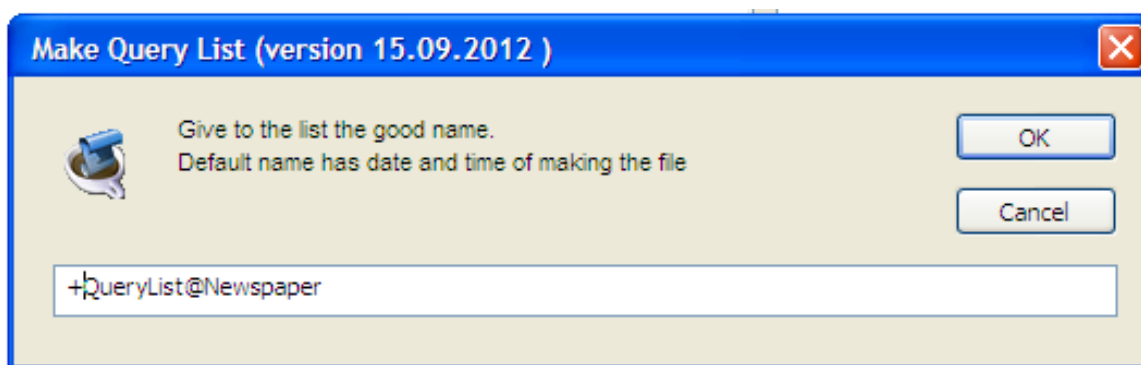


In this list will be kept names of queries from default folders.

#### *Save both list of queries and own queries*

Obvious if you want to share your experience in text processing by using your queries, or in your business several computers are used, it's need to keep both list of queries and all these queries. For current set of queries in right window the script holds all this information in one separate directory. This directory is created in the script folder.

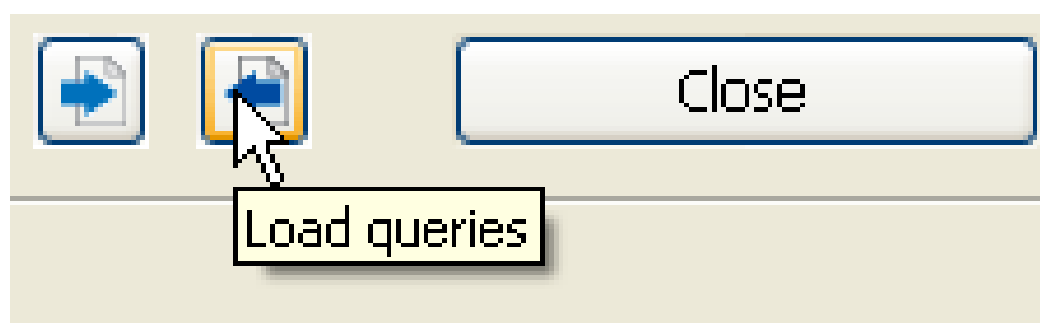
To do such saving the first character in name of list must be '+' sign.



As name is started with '+' — the directory with the same name is created, and there kept this list of queries +QueryList@Newspaper.indique and all the queries in directories named Grep and Text.

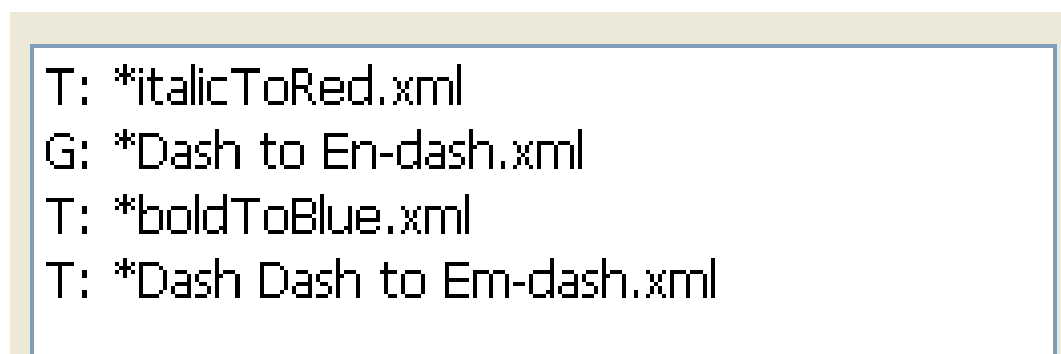


To load saved earlier list of queries push this button:



A folder where the script is situated is opened so it is good idea to place here all folders with gathered by users text/grep queries.

When such folder is opened and +indique-file is loaded, the names of queries in right window began with asterisks:



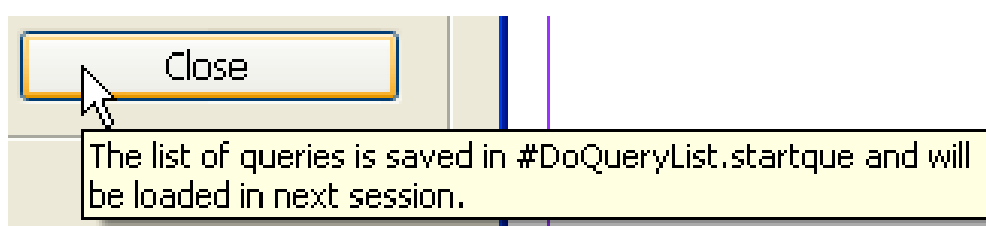
In case of loading indique-file without '+' in name all names will be without the asterisks.

### *Information about current user folder*

User may sequentially load a lot of collection of queries. And sometimes it is easy to forget that folder is used now. To have this information place cursor in header of main window and you will see full information about last loaded list of queries.



### *Finishing text processing*



Information about position main window on screen kept too. This window will be opened in same position where it was closed.

### **Selection the language**

Language is selected by typing on thumbnail flag.



By default Britain flag is shown for English language. If you want to see here USA flag, change the code of script. It is very easy — find the line:

```
myEngFlag = myGreatBritainFlag;
```

and change it to

```
myEngFlag = myUSAFlag;
```

### **Gratitude**

I owe much to Peter Kahrel (Great Britain), Laurent Tournier (France), Janneta Kat (Germany), Tatiana Prokofieva (Russia) and Alexey Chmel (Russia) for help in translating and testing this script.

### **How to get update of the script**

In such projects it's not possible to anticipate all situations, so I think new versions are coming.

To receive its you need to send a mail with your name to **doquerylist@gmail.com**

And if you have the thinks / ideas / wishes — be free to write me in Russian or English language.

Mikhail Ivanyushin

Moscow

[adobeindesign.ru](http://adobeindesign.ru)

m.ivanyushin@gmail.com