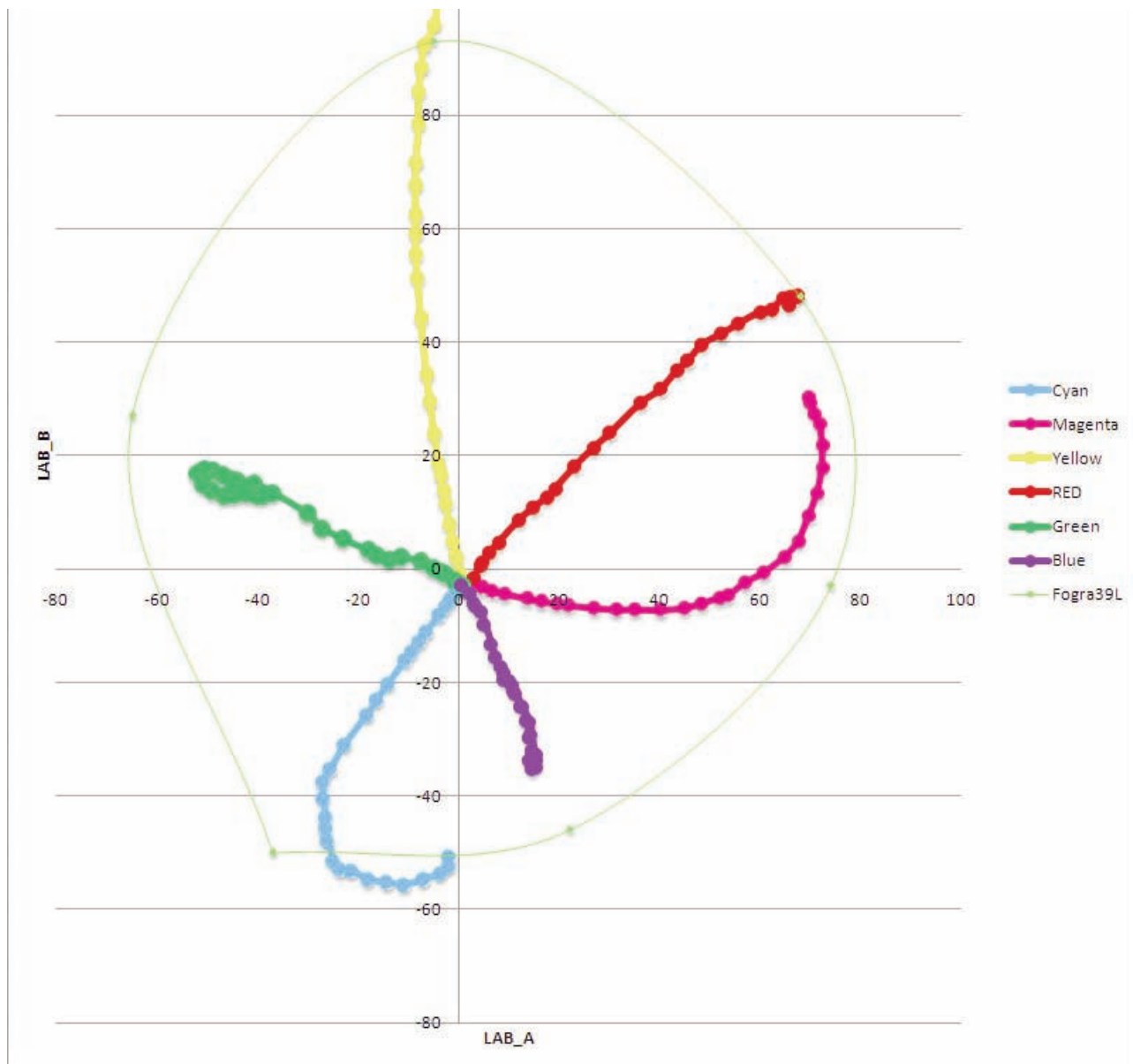
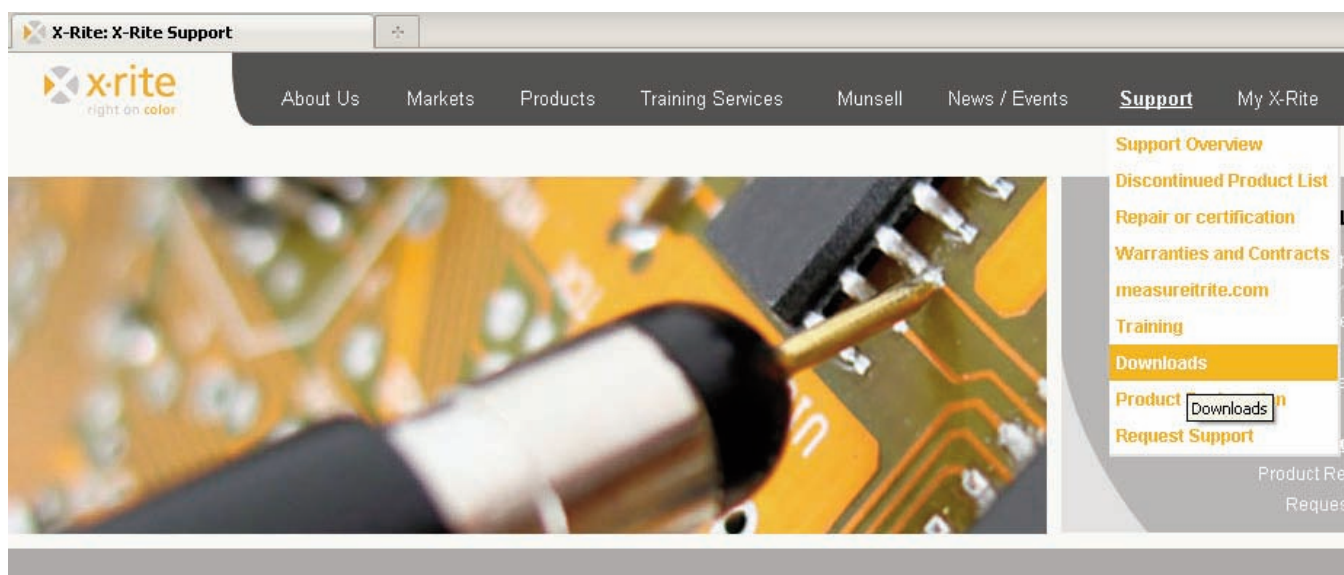


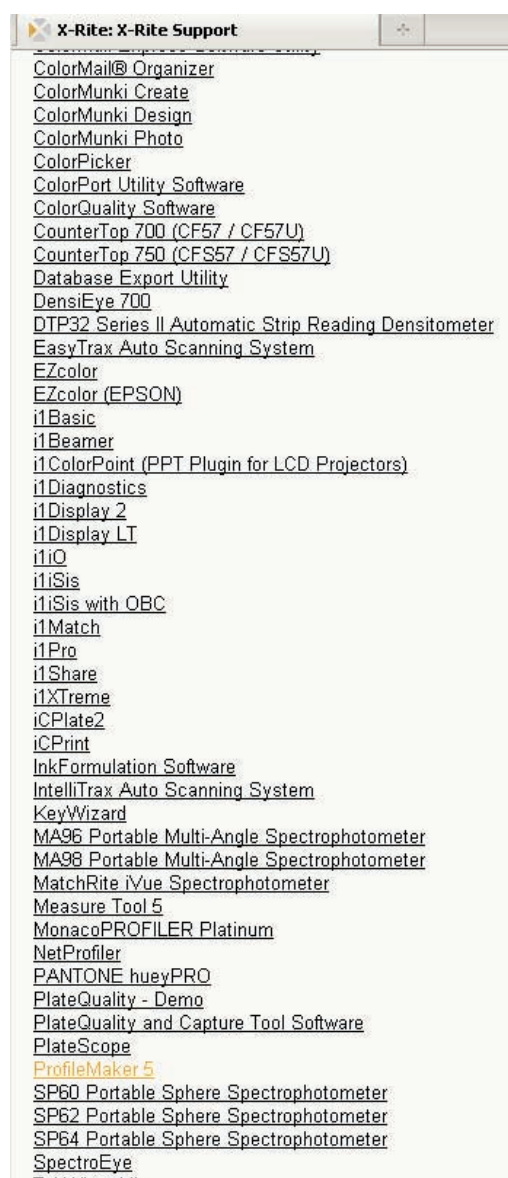
## Ink limit per channel



**Ink limit per channel quick start  
with demo version of MeasureTools 5 and i1 pro**



## Установка X-Rite ProfileMaker Demo



X-Rite: APPS\_PM5 : ProfileMaker 5

Market

### ProfileMaker 5




Software Downloads (10 Items)	Version	Previous Version
<a href="#">Calibration (LUT) Tester</a>	NA	
<a href="#">DisplayProfile Freeware for Windows</a>	NA	
<a href="#">FOGRA Reference Files (39 &amp; 40) for MeasureTool 5</a>	39 & 40	
<a href="#">i1iSis Driver Update</a>	PC 4-26-2010 -- Mac 11-27-2007	
<a href="#">License Tool for ProfileMaker 5</a>	v5.0.3	
<a href="#">Multi Color Plugin for Adobe® Photoshop®</a>	v1.2	
<a href="#">Multi Color Plugin for Photoshop® - Japanese</a>	v1.2	
<a href="#">PANTONE® UV Cut Libraries</a>	NA	
<a href="#">ProfileMaker</a>	v5.0.10	5.0.9
<a href="#">ProfileMaker 5 - Japanese</a>	v5.0.10	5.0.9

ProfileMaker v5.0.10

x-rite  
right on color

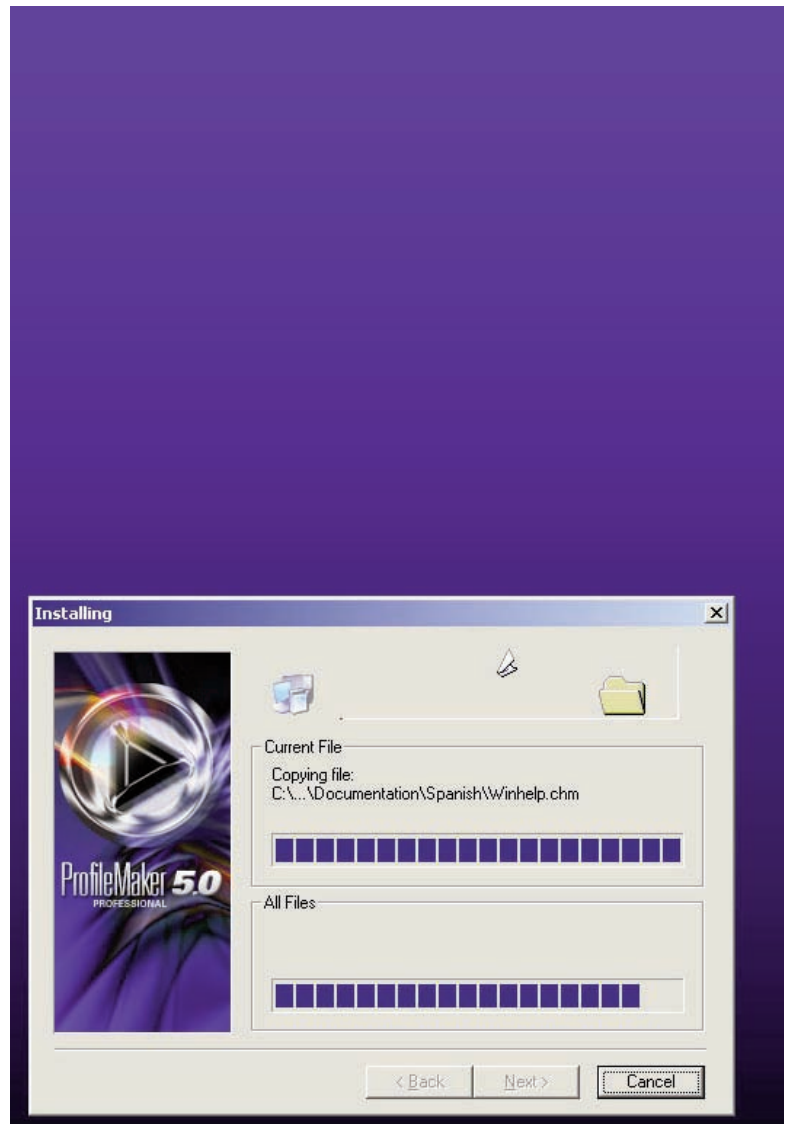
About Us Markets **Product**

# PM5 PhotoStudio

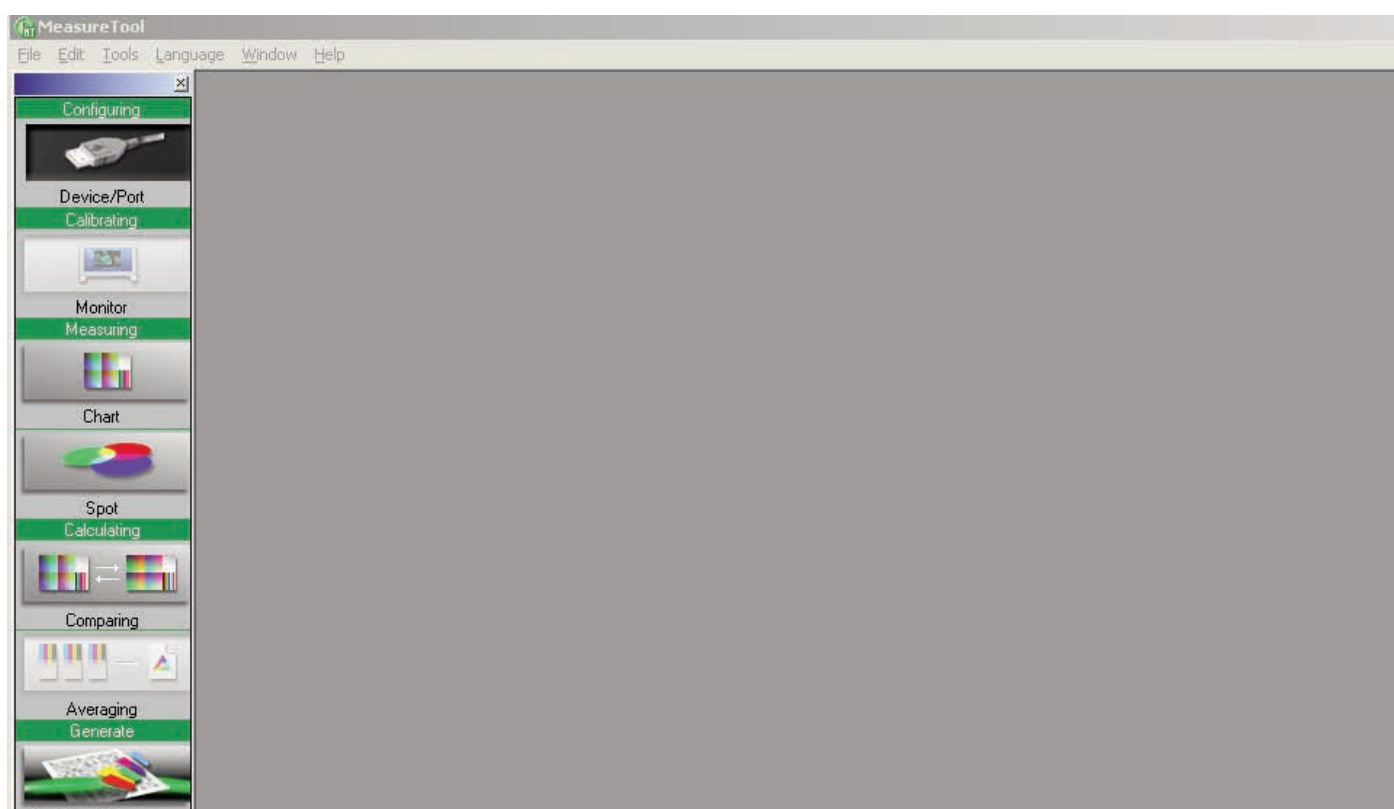
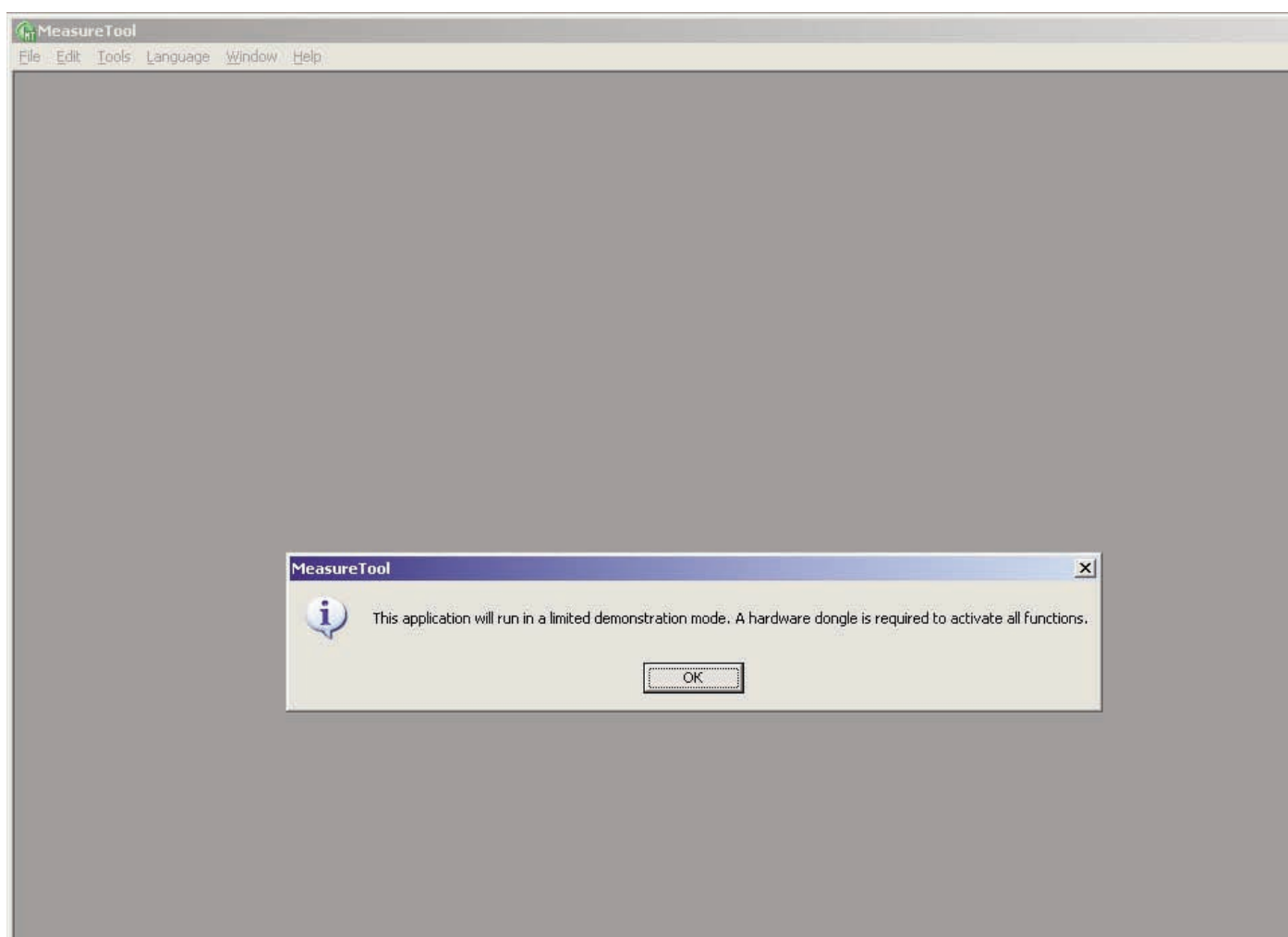
Market |   

## ProfileMaker 5

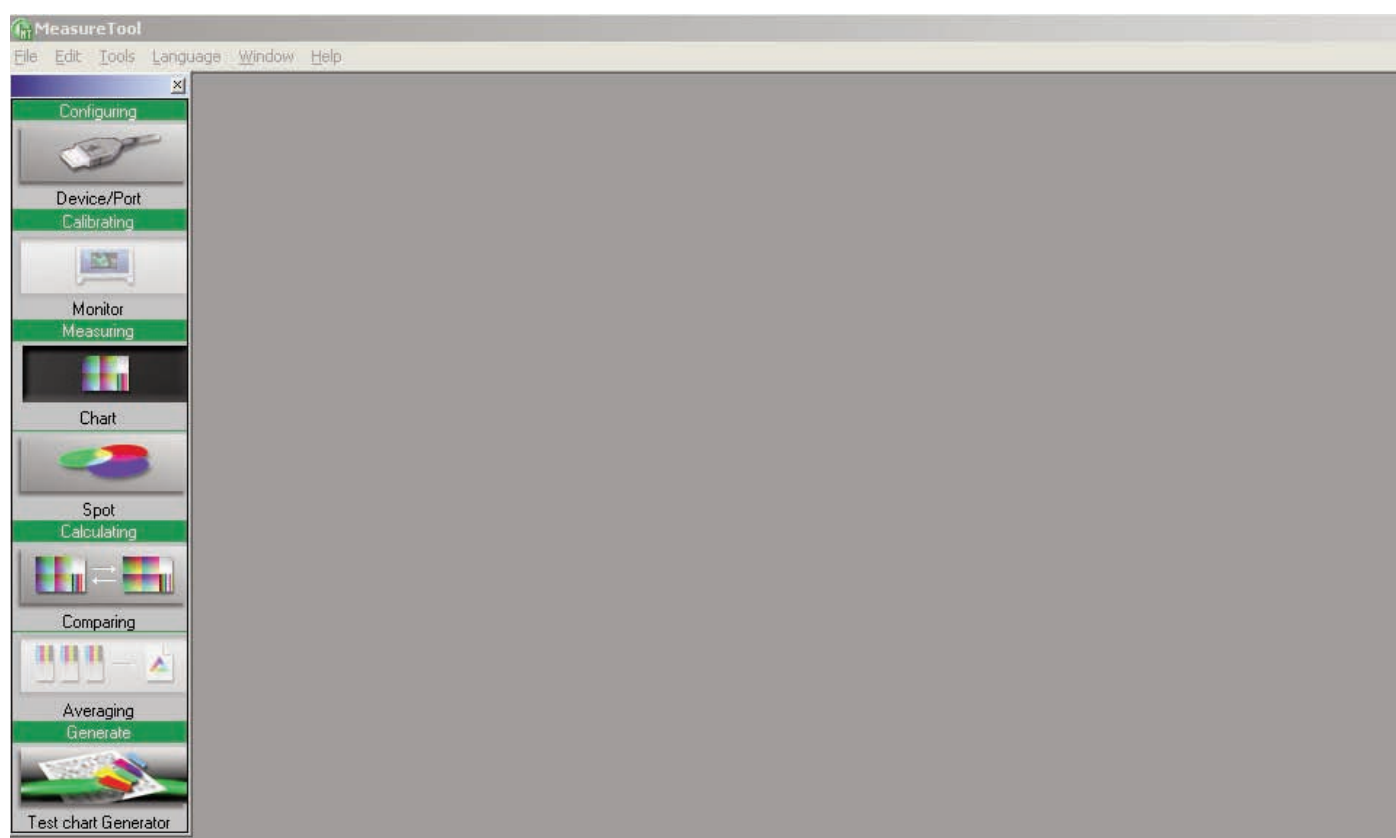
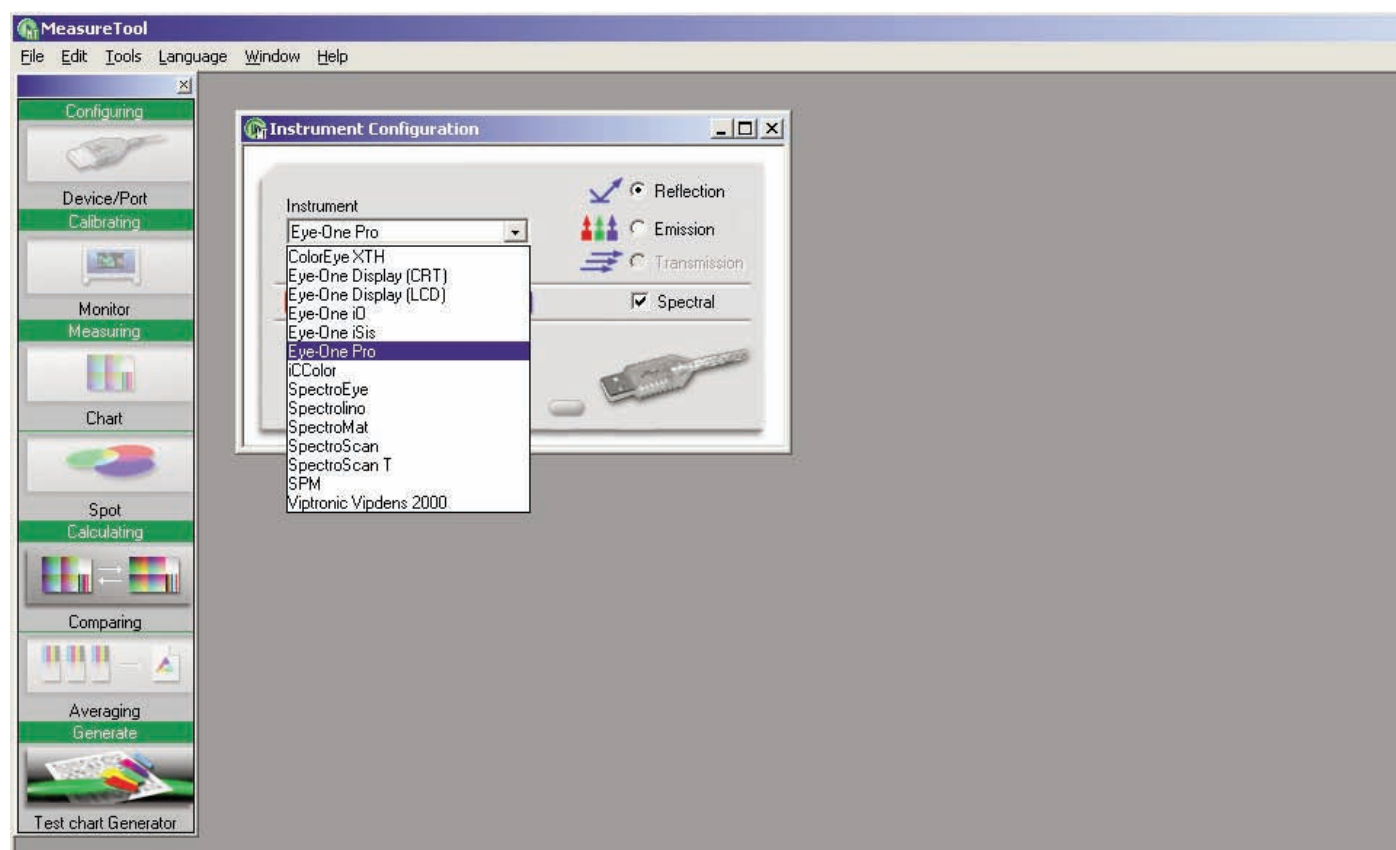
**Download:** ProfileMaker  
**Version:** v5.0.10  
**Previous Version:** 5.0.9  
**Release Date:** 02.11.2009  
**File Type:** PC - EXE File, Mac - Mac Disk Image File (DMG)  
**Download:** [PC Version](#) [Mac Version](#)  
**Notes:**  
ProfileMaker 5.0.10 for Mac which is now compatible with OS10.6, Fogra media wedge reports and the newest i1 device drivers.



## Работа с MeasureTools

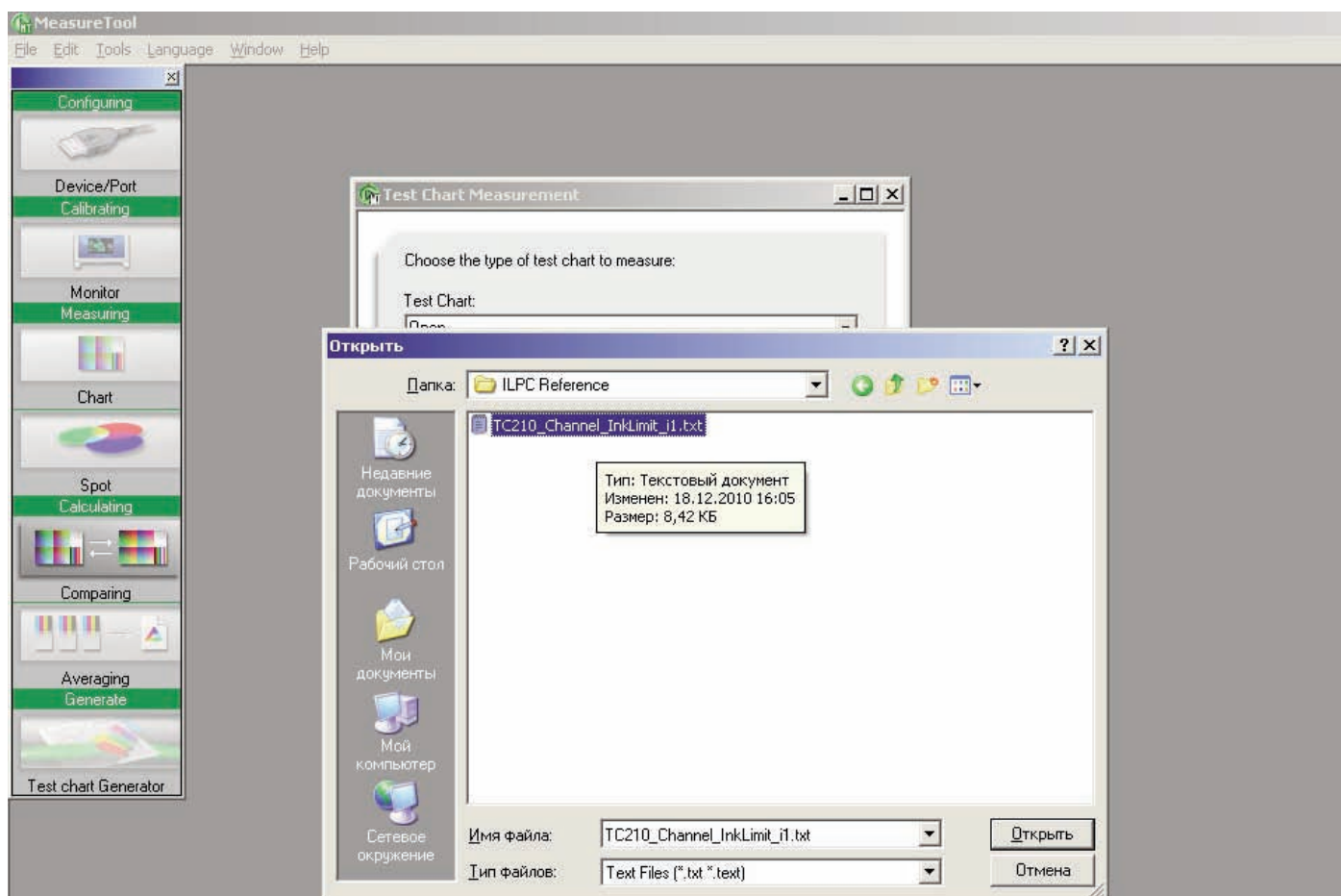
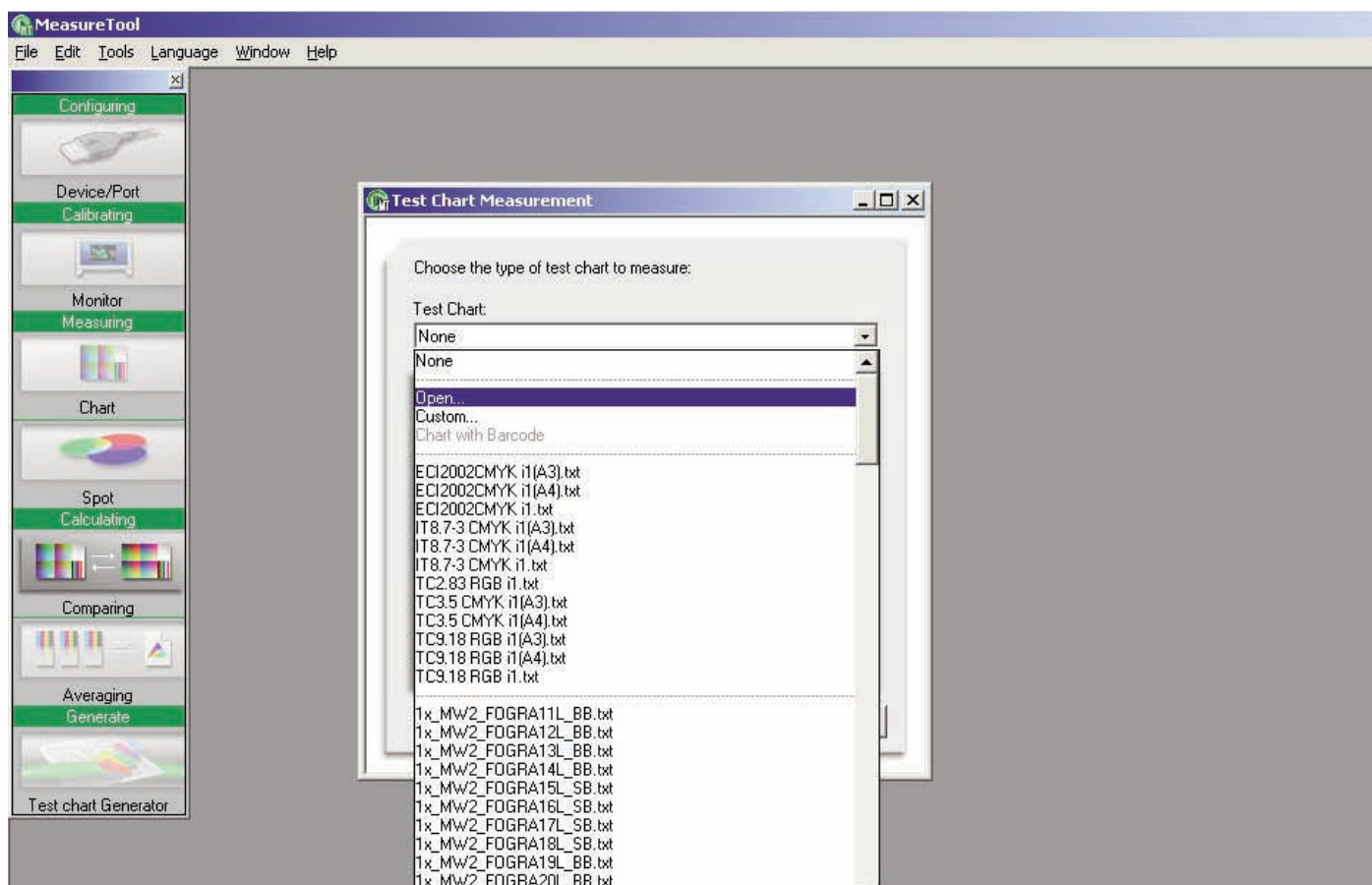


## Работа с MeasureTools

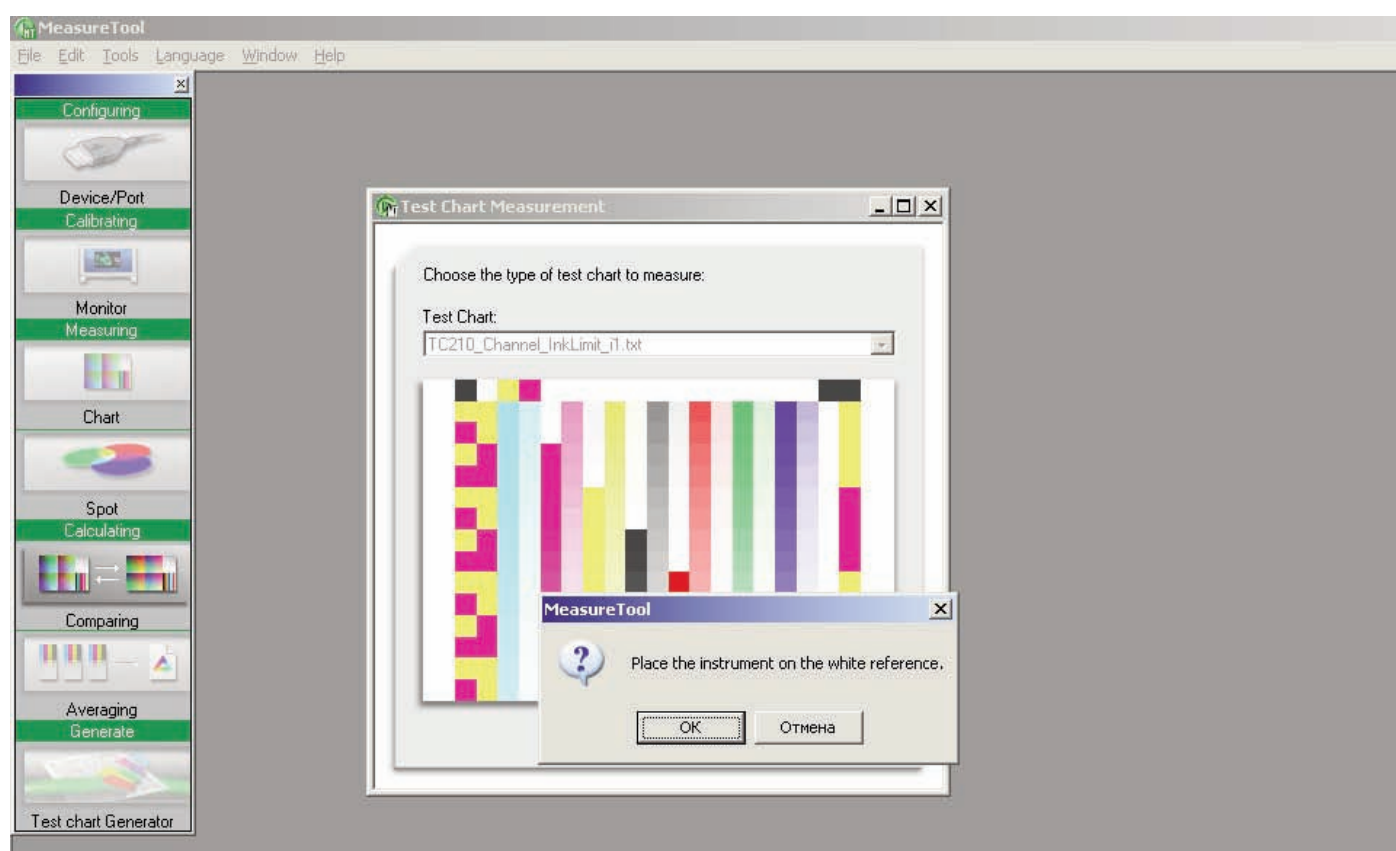
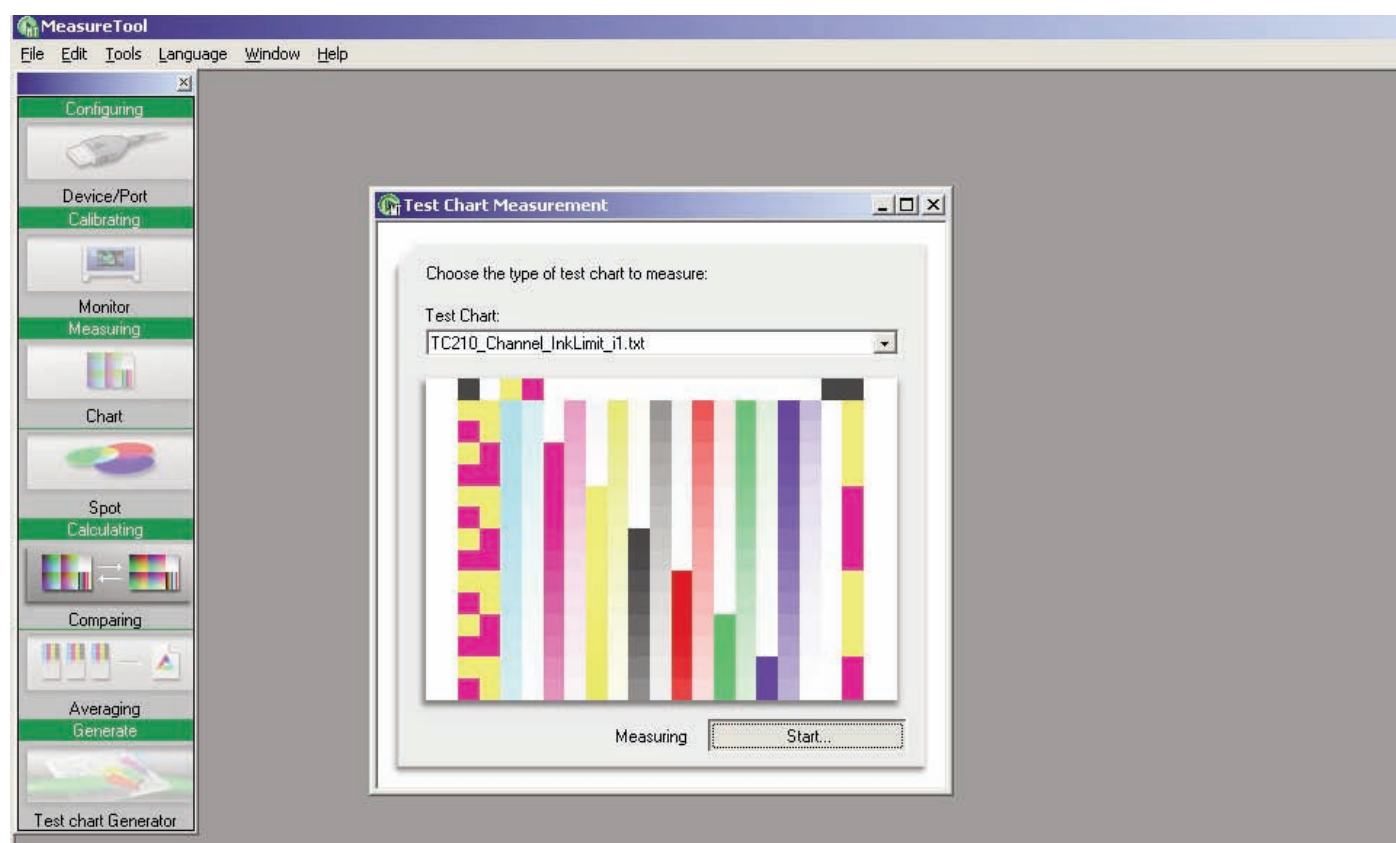




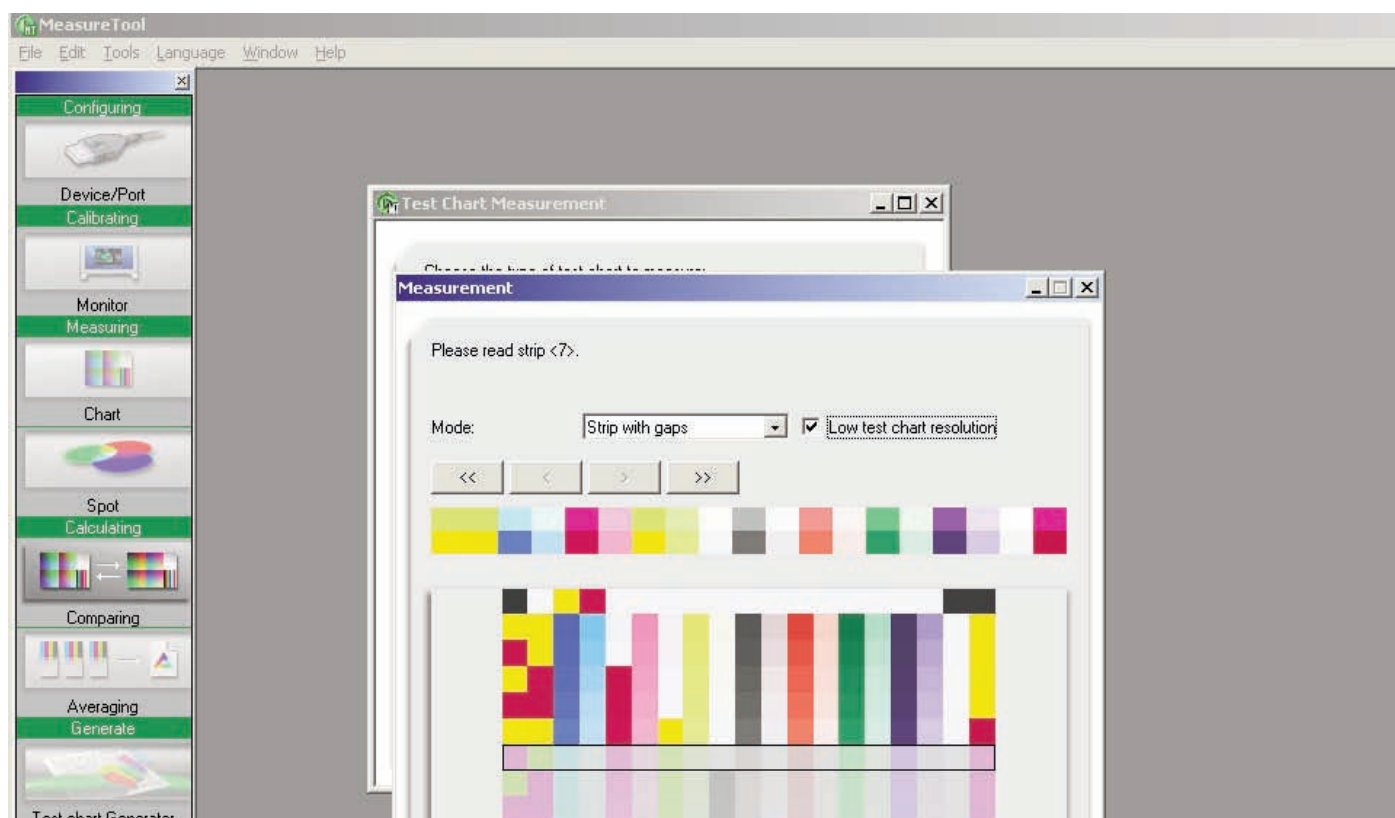
## Работа с MeasureTools



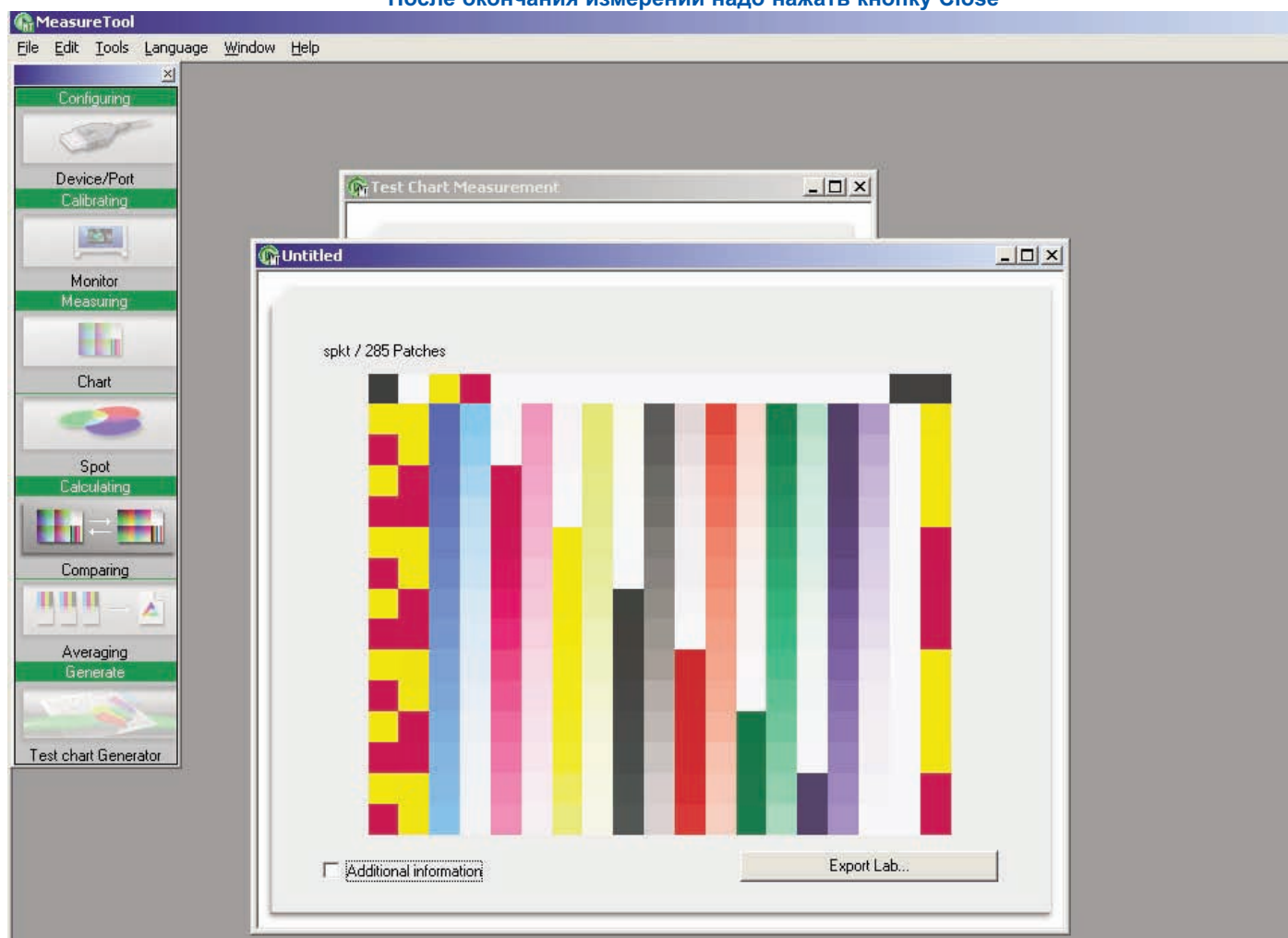
## Работа с MeasureTools



## Работа с MeasureTools

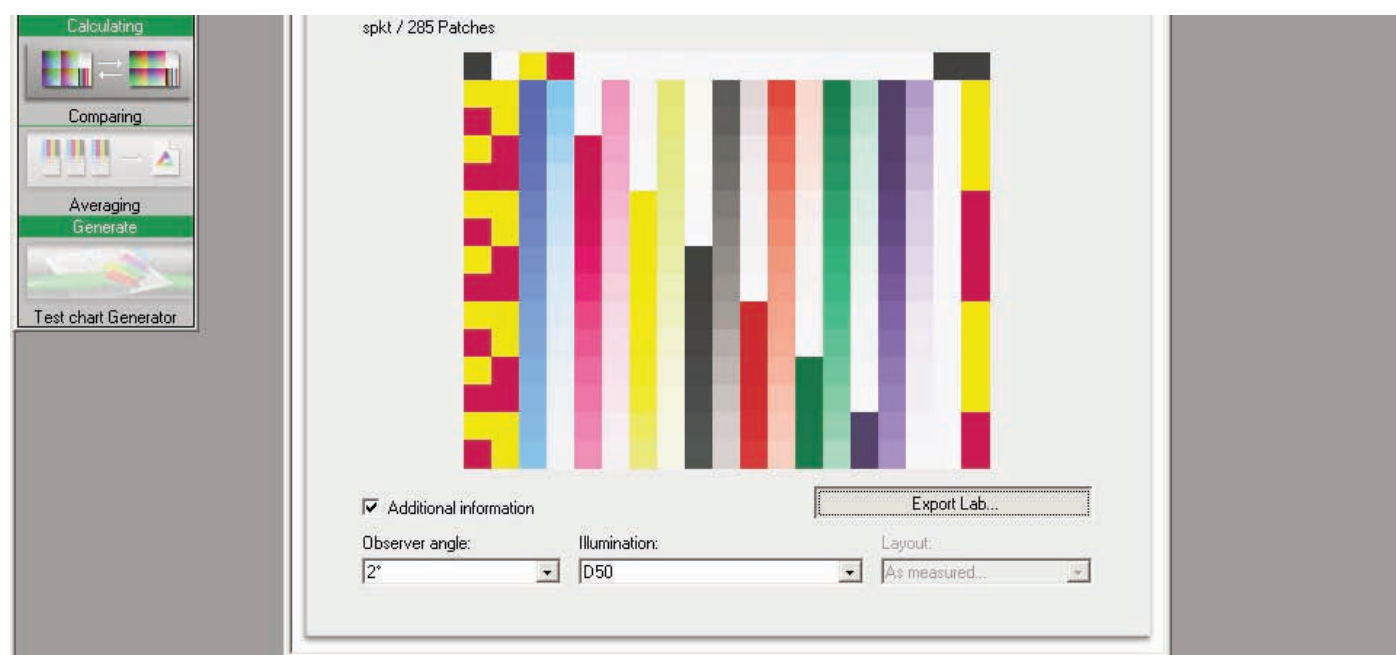
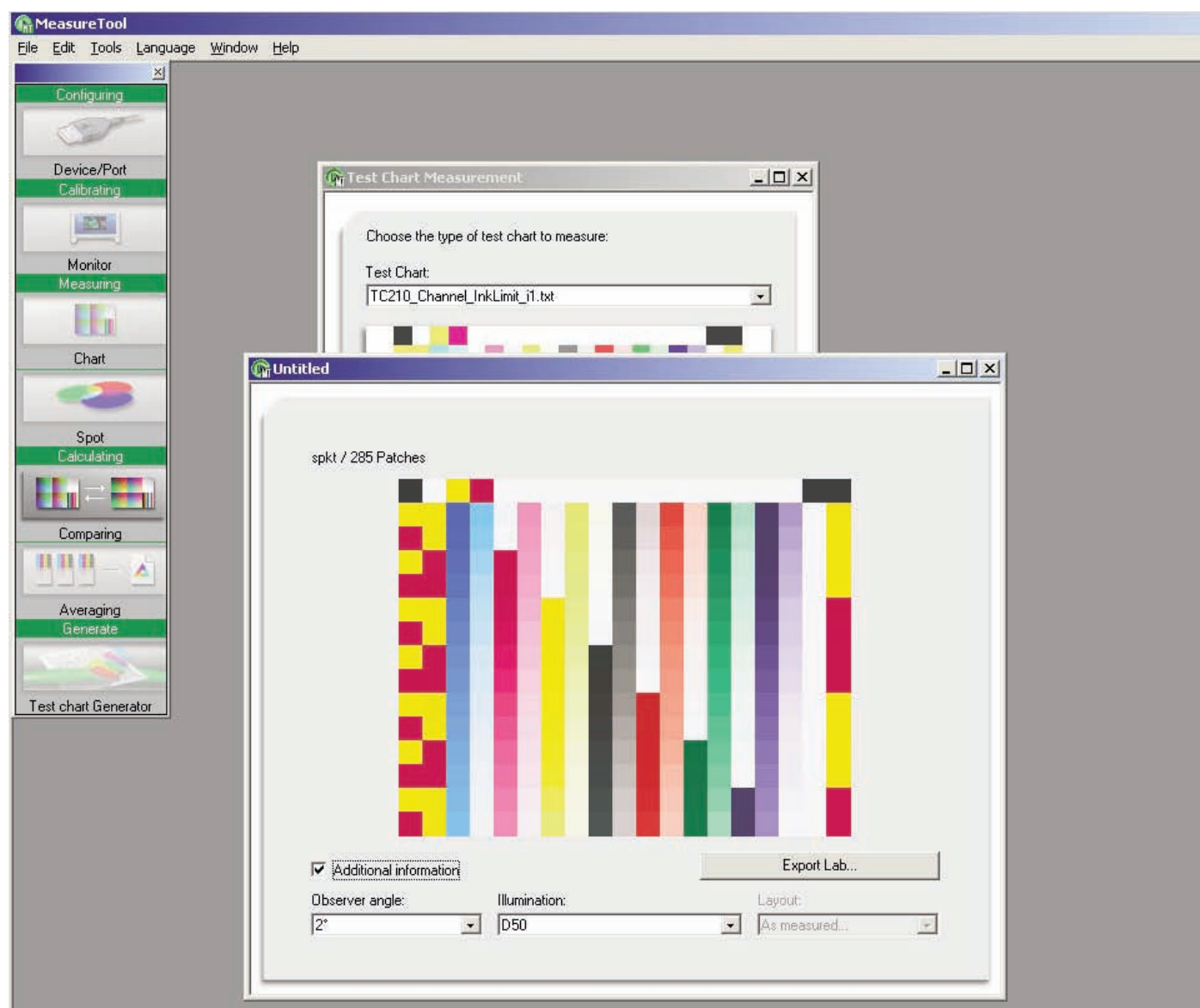


После окончания измерений надо нажать кнопку Close

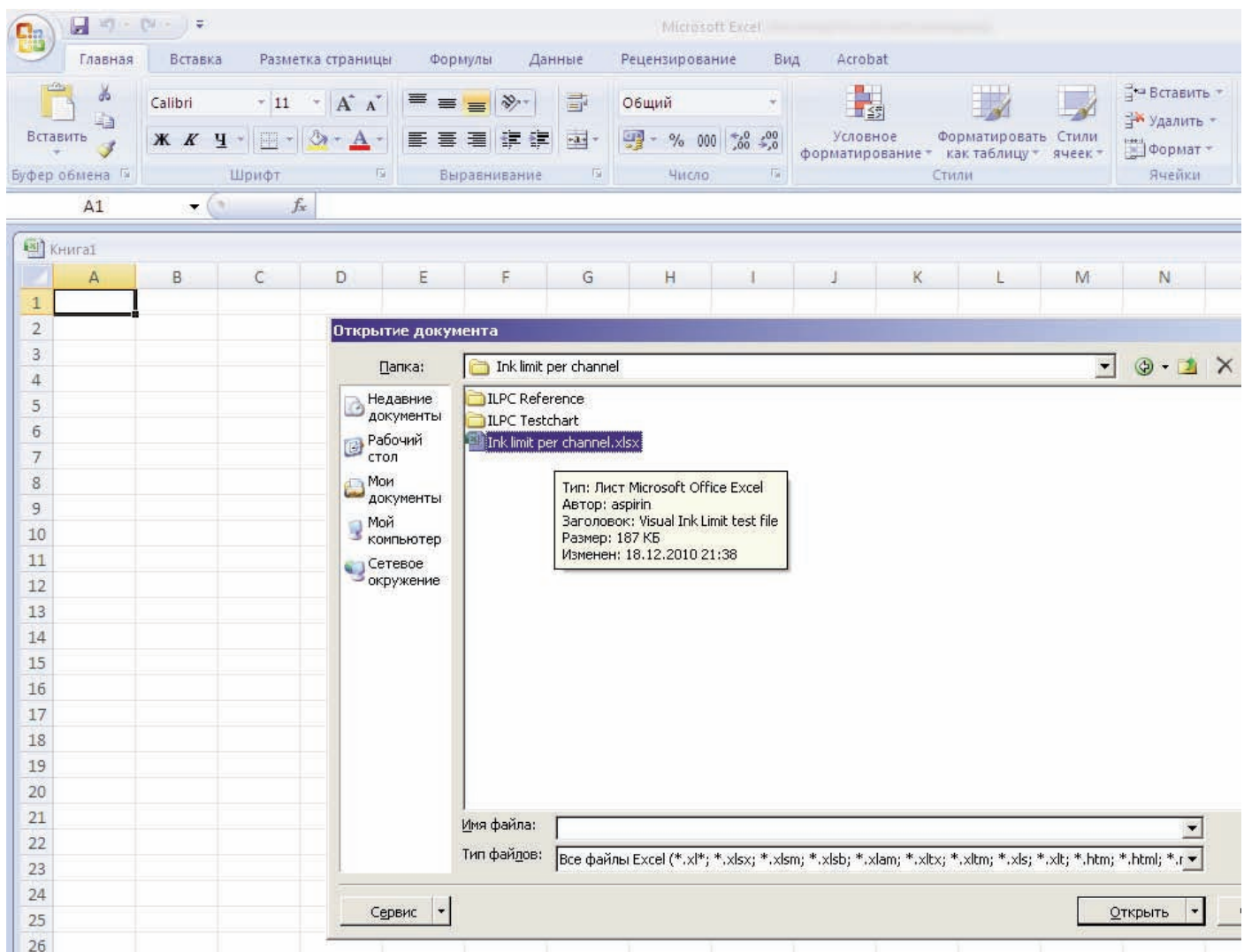
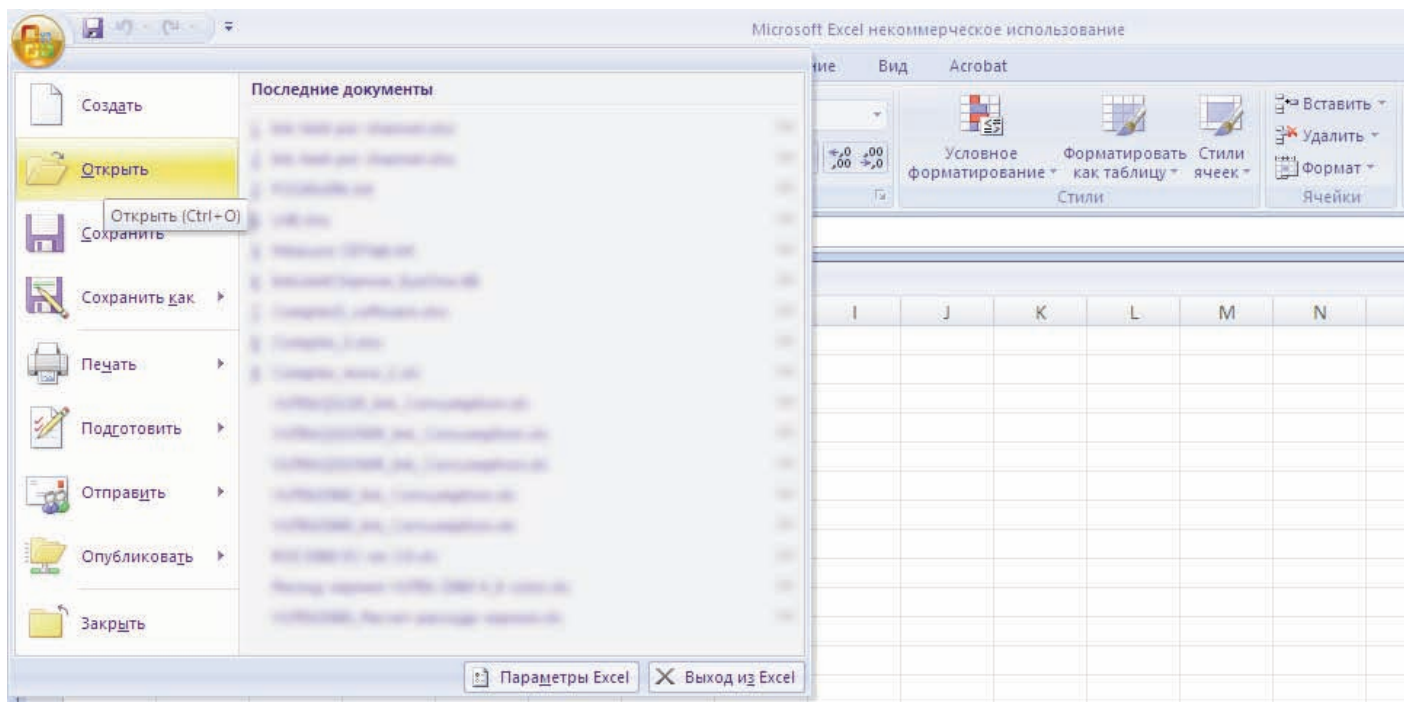




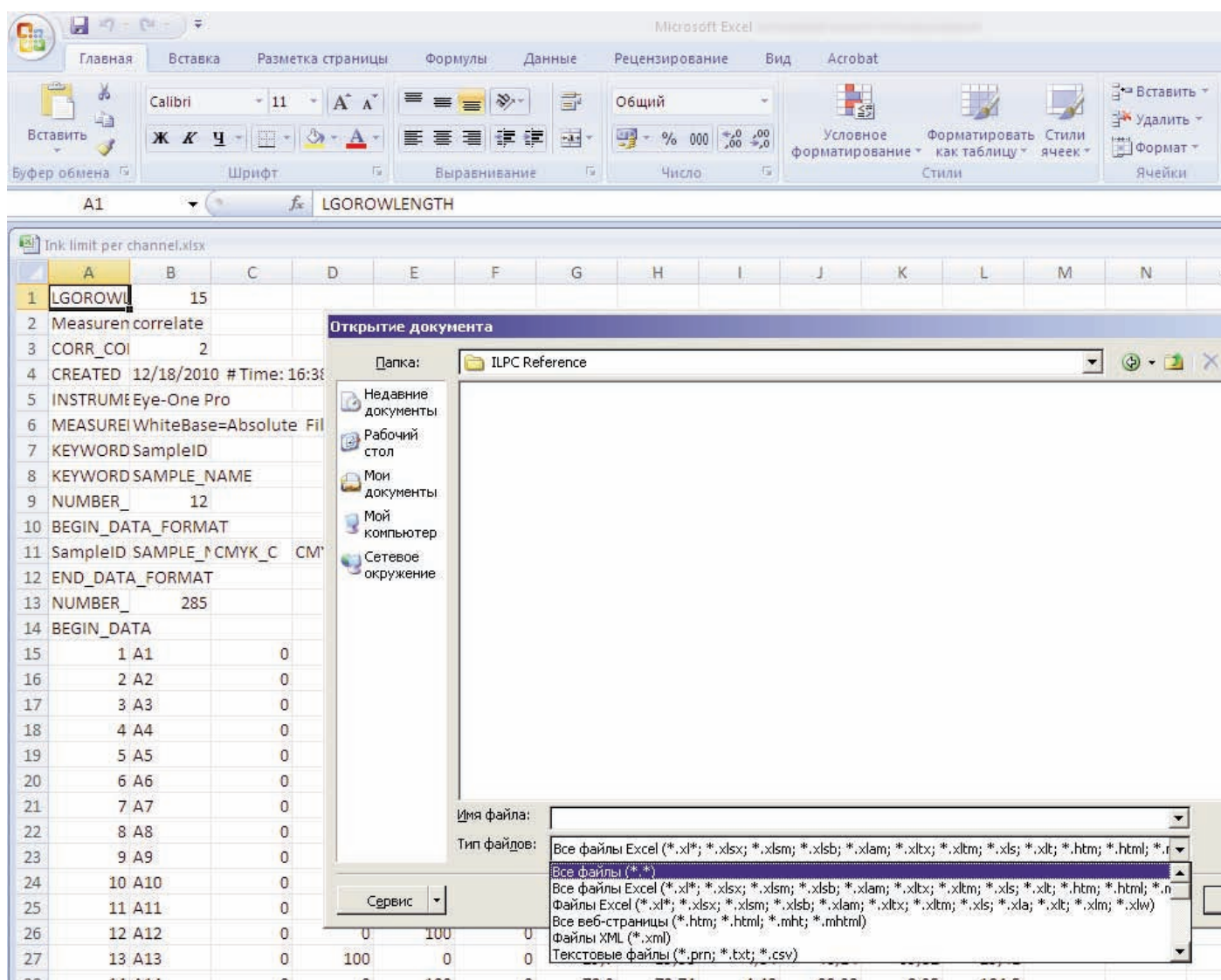
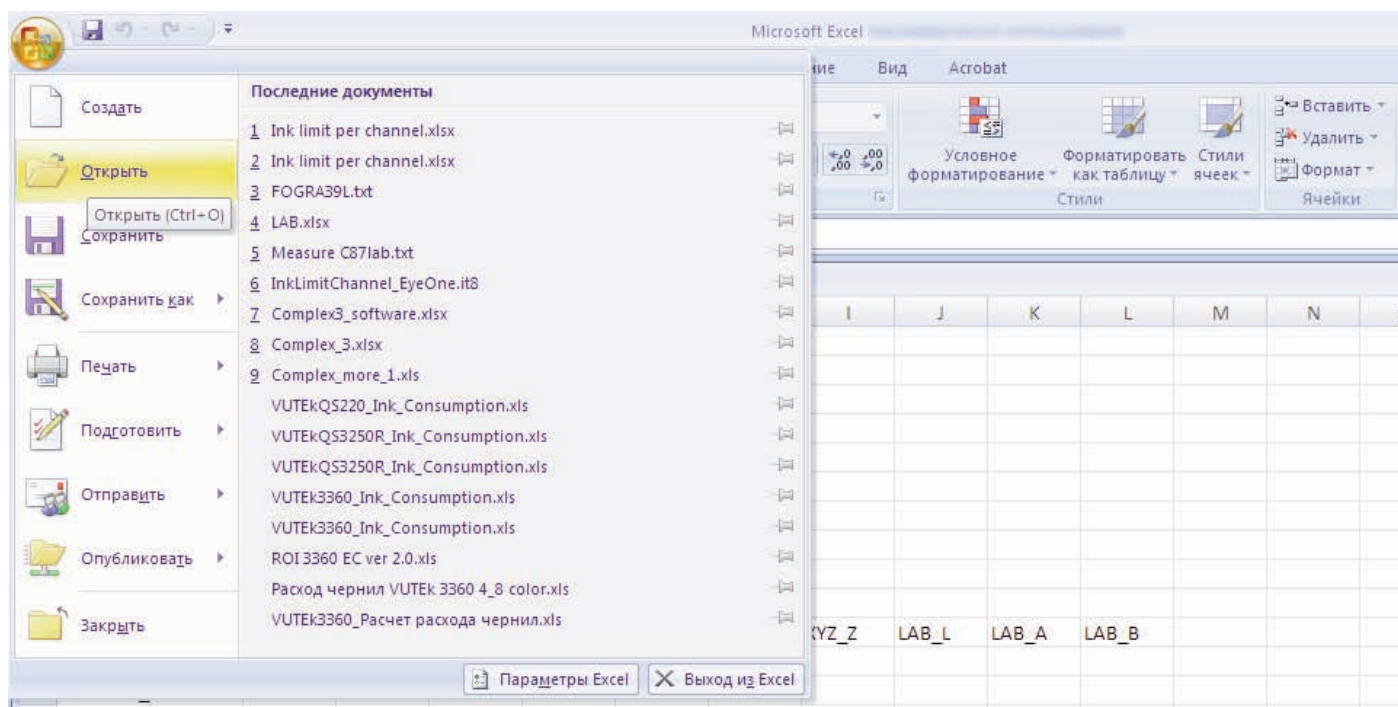
## Работа с MeasureTools



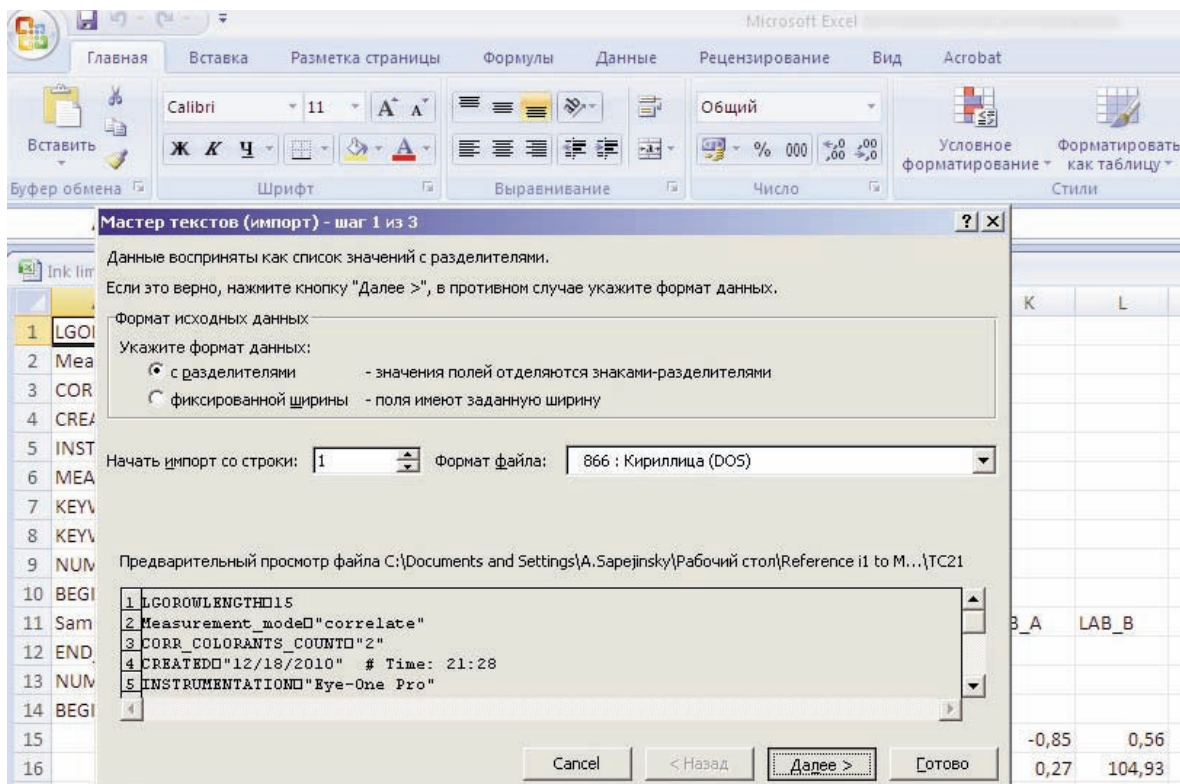
## Работа с файлами Excel



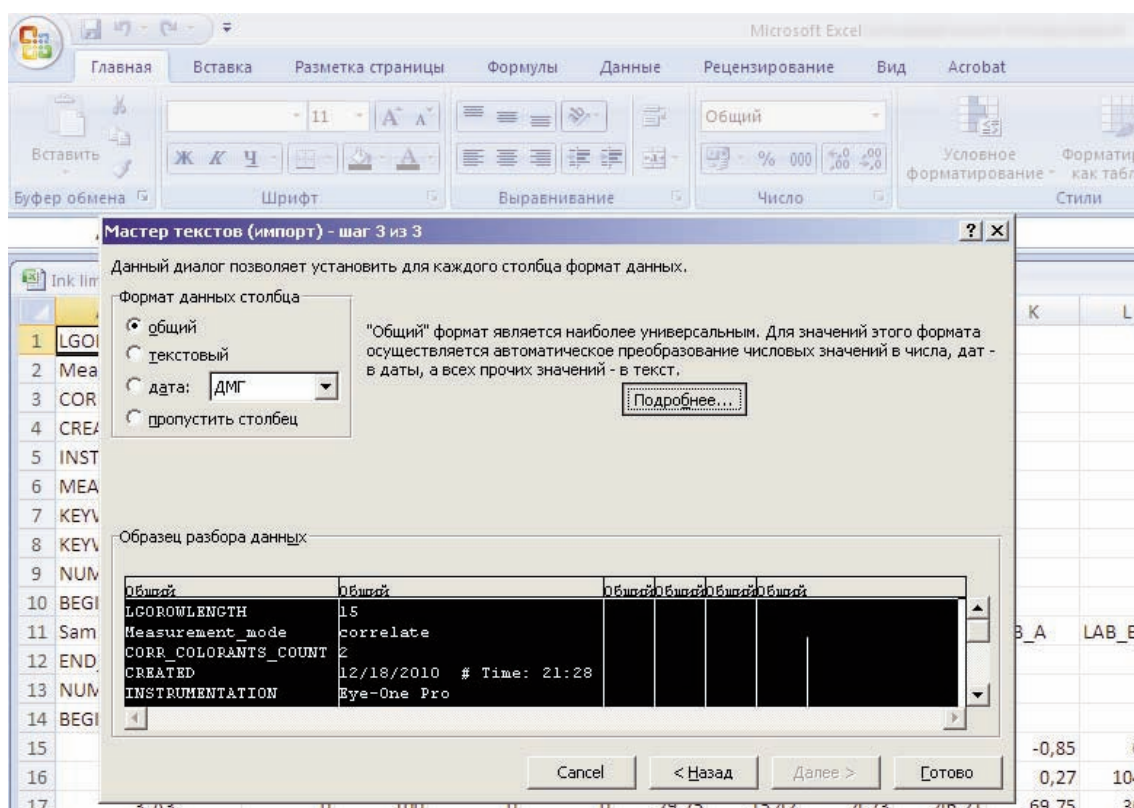
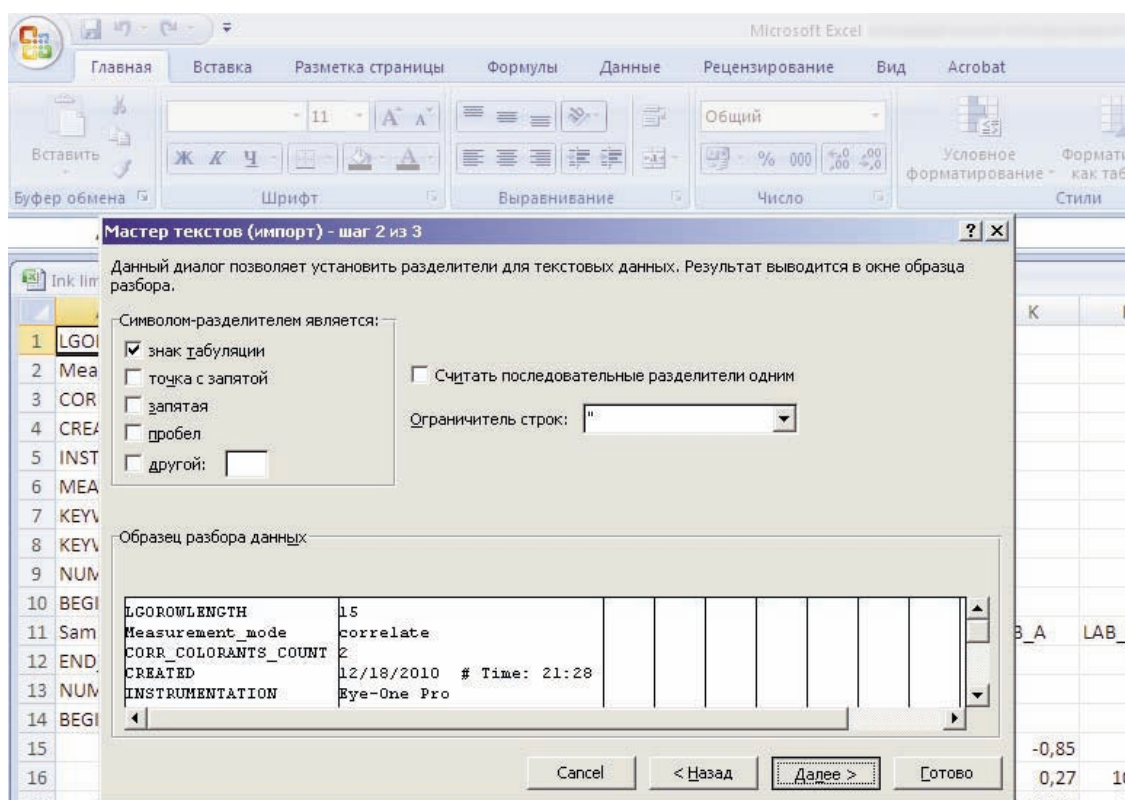
## Работа с файлами Excel





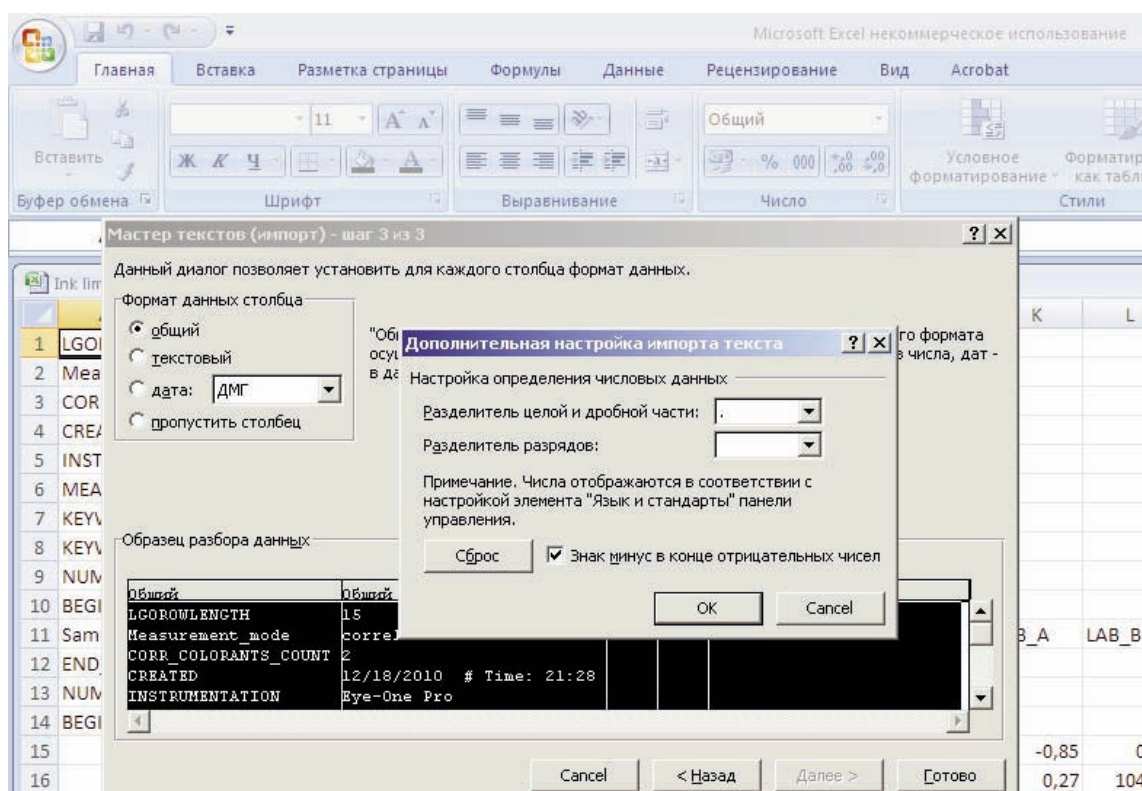


## Работа с файлами Excel

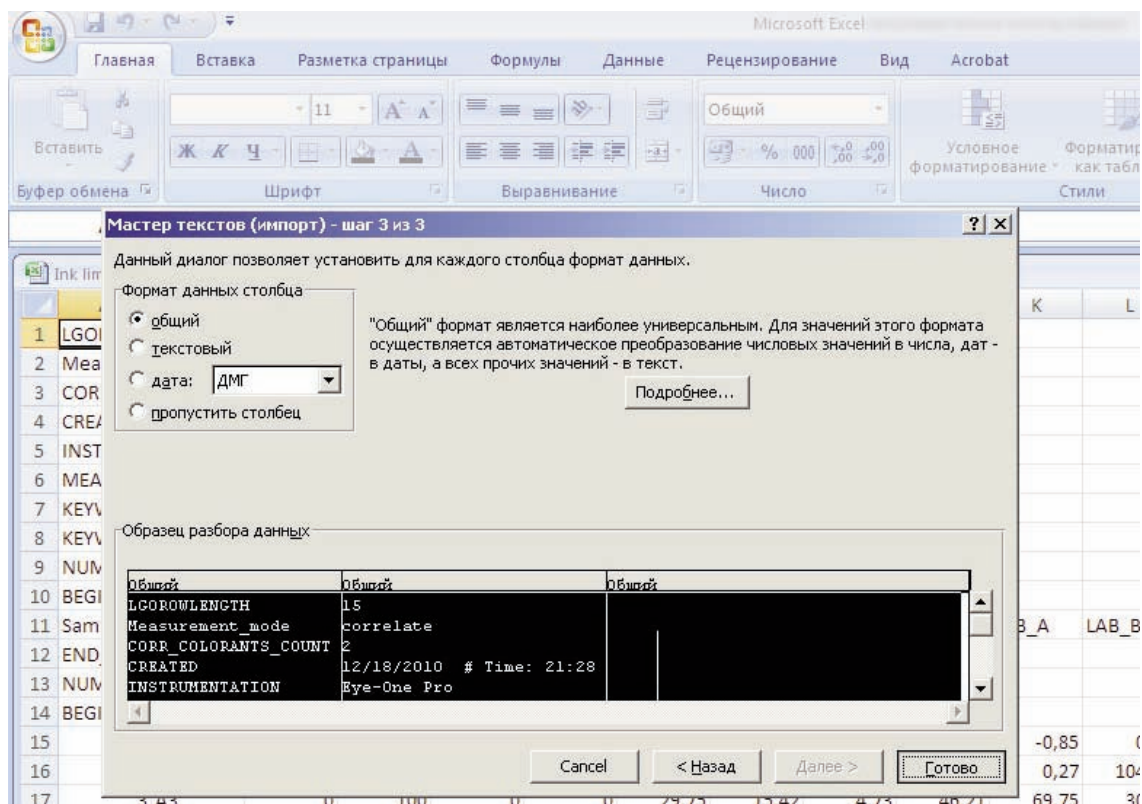




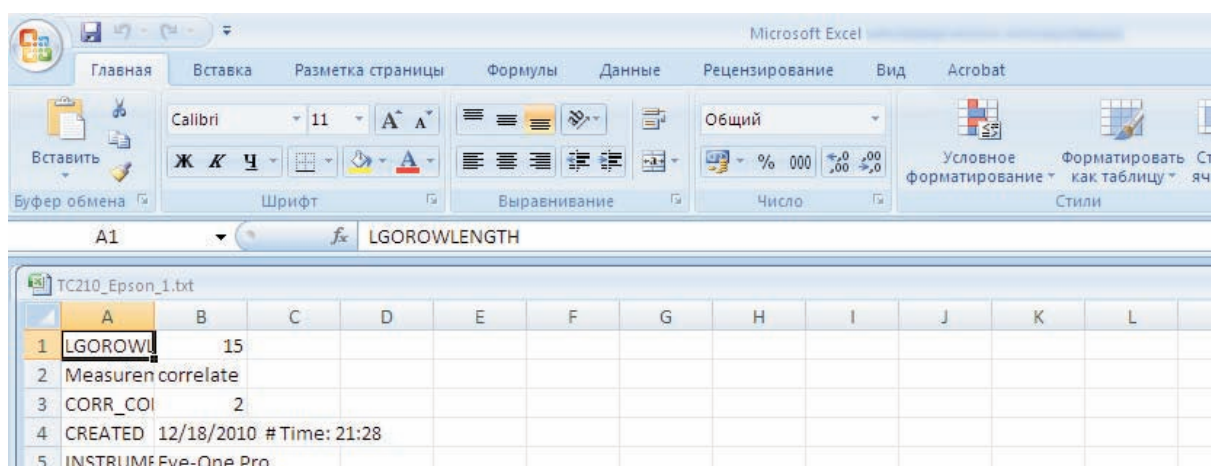
## Работа с файлами Excel



Если не изменить разделитель на точку, данные будут преобразованы в даты



## Работа с файлами Excel

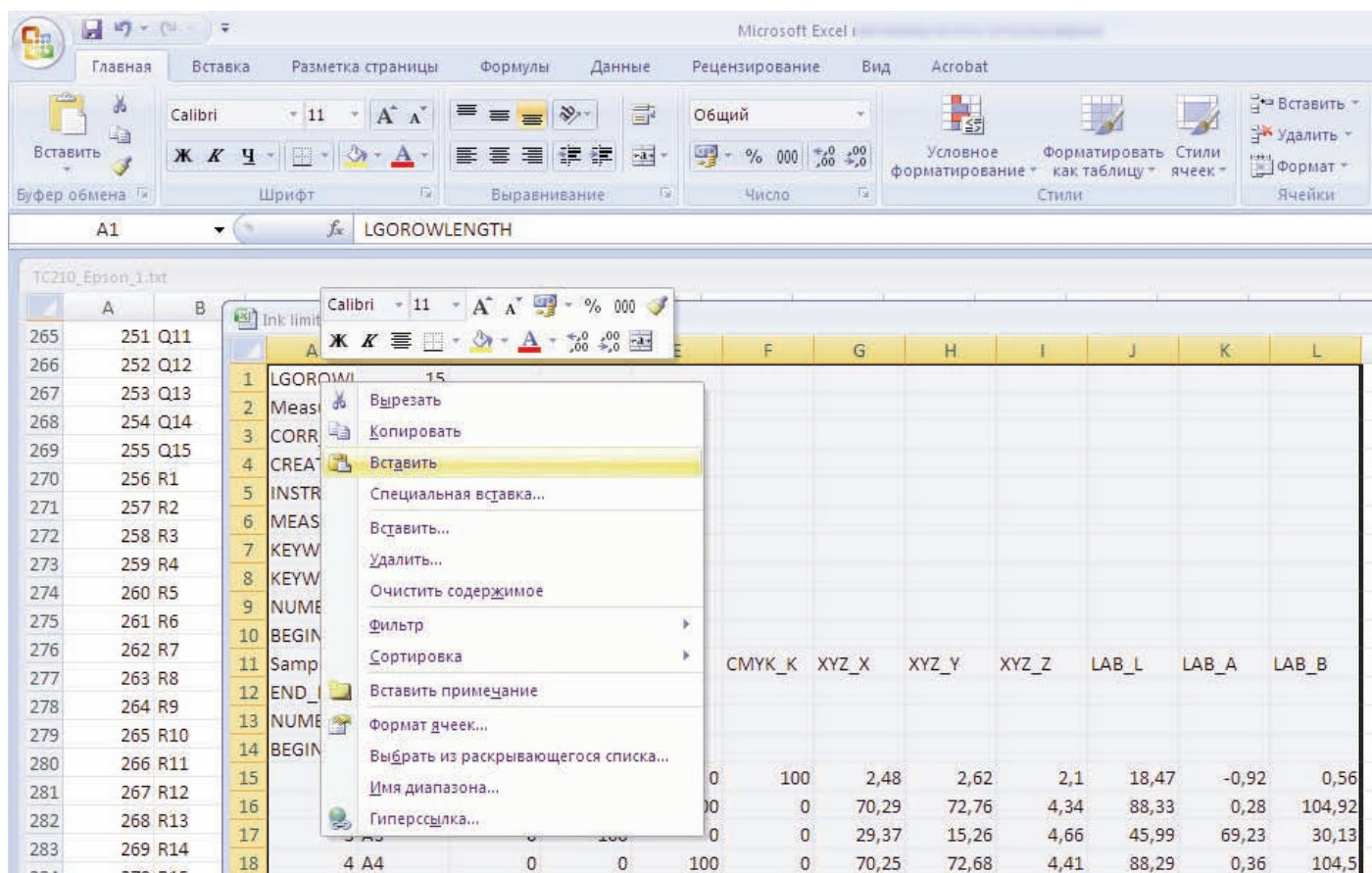


Используйте команду “Выделить все”, при помощи сочетания клавиш **CNTRL+A**

	A	B	C	D	E	F	G	H	I	J	K	L
265	251 Q11		5,49	5,49	0	0	75,9	76,48	71,17	90,08	4,42	-7,51
266	252 Q12		3,53	3,53	0	0	79,11	80,22	73,26	91,78	3,49	-6,41
267	253 Q13		3,14	3,14	0	0	79,56	80,92	73,35	92,1	3,03	-5,95
268	254 Q14		1,57	1,57	0	0	83,81	85,73	75,62	94,2	2,2	-4,3
269	255 Q15		0	0	0	0	87,75	90,7	78,07	96,29	0,53	-2,76
270	256 R1		0	0	0	100	2,62	2,78	2,2	19,15	-1,08	0,81
271	257 R2		0	0	0	0	87,27	90,23	77,24	96,09	0,5	-2,39
272	258 R3		0	0	0	0	87,66	90,64	77,43	96,26	0,48	-2,27
273	259 R4		0	0	0	0	87,6	90,59	77,45	96,24	0,46	-2,32
274	260 R5		0	0	0	0	87,52	90,5	77,3	96,2	0,48	-2,26
275	261 R6		0	0	0	0	87,71	90,71	77,36	96,29	0,46	-2,17
276	262 R7		0	0	0	0	87,42	90,39	77,04	96,16	0,48	-2,12
277	263 R8		0	0	0	0	87,56	90,55	77,35	96,22	0,47	-2,27
278	264 R9		0	0	0	0	87,6	90,6	77,48	96,24	0,46	-2,34
279	265 R10		0	0	0	0	87,62	90,61	77,3	96,25	0,47	-2,18
280	266 R11		0	0	0	0	87,6	90,59	77,45	96,24	0,47	-2,32
281	267 R12		0	0	0	0	87,78	90,76	77,8	96,31	0,49	-2,5
282	268 R13		0	0	0	0	87,62	90,59	77,6	96,24	0,5	-2,45
283	269 R14		0	0	0	0	87,94	90,9	77,91	96,37	0,53	-2,49
284	270 R15		0	0	0	0	87,89	90,86	78,09	96,35	0,53	-2,67
285	271 S1		0	0	0	100	2,63	2,79	2,23	19,16	-1,03	0,61
286	272 S2		0	0	100	0	67,68	69,69	4,48	86,84	1,07	101,58
287	273 S3		0	0	100	0	69,16	71,25	4,41	87,6	0,99	103,27
288	274 S4		0	0	100	0	69,49	71,71	4,36	87,83	0,75	103,96
289	275 S5		0	0	100	0	70,04	72,23	4,31	88,08	0,83	104,65
290	276 S6		0	100	0	0	29,08	15,07	4,57	45,73	69,22	30,19
291	277 S7		0	100	0	0	28,88	14,97	4,51	45,6	69,02	30,29
292	278 S8		0	100	0	0	29,09	15,1	4,55	45,77	69,07	30,4
293	279 S9		0	100	0	0	29,24	15,19	4,62	45,89	69,17	30,2
294	280 S10		0	0	100	0	69,09	71,23	4,31	87,6	0,88	103,86
295	281 S11		0	0	100	0	68,95	71,18	4,28	87,57	0,7	103,97
296	282 S12		0	0	100	0	69,7	71,93	4,33	87,93	0,75	104,34
297	283 S13		0	0	100	0	69,66	71,9	4,35	87,92	0,71	104,19
298	284 S14		0	100	0	0	29,18	15,16	4,64	45,85	69,12	30
299	285 S15		0	100	0	0	29,28	15,21	4,67	45,92	69,18	29,98
300	END_DATA											



## Работа с файлами Excel



## Работа с файлами Excel

