

---





TITLE

GENERAL ASSEMBLY P. LIST

DRG. NO.

A 4463-2 -2

ISS

6

PART NO.

COPYRIGHT © 1999

DATE 29/11/99

DRAWN DS

ITEM	QTY	Code No	DESCRIPTION	Drg No
		FP12874	Complete Ass'y	A4463
1	1	YY11142	Cabinet	C4424
2	1	AU00666	Front Baffle	C4425
3	1	ZZ12688	HF Unit	A4809
4	1	ZZ12467	Bass Mid Unit	A4380
5	1	ZZ12246	Bass Unit	A4470
6	1	ZT00620	Terminal Tray/Port Flare	A4704
7	1	ZZ12661	Crossover	A4715
8	1	PP14060	Port Facia Inner	B4641
9	1	MM01120	HF Trim	B4432
10				
11	1	PP13862	Port Tube	A3728
12	1	PP14329	Port Tube	A4736
13	1	GG06637	HF Gasket	A4770
14	1	ZG01295	Grille Assembly	A4464
15	8	PP13209	Grille Standoffs	A4422
16	1	SS09709	Serial Label	
17	10	HH02062	Screw	
18	8	HH10766	Screw M4x20 Cap Head Blk	
19	1	ZE01317	Accessory Pack	
20	1	PP18241	Port & Gasket Assembly	A6392
21	1	GG06726	Trim Gasket	A4864
22				
23				
24	1	BB09202	Badge	A2924

6

REMOVE ITEM 25 FF00566 FASTENER

1098

10:06:04

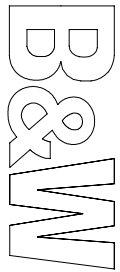
ISSUE

AMENDMENT

ECN No.

DATE

APPROVAL



TITLE

HF GENERAL ASSEMBLY

DRG. NO.

A 4809-1 -2

ISS

5

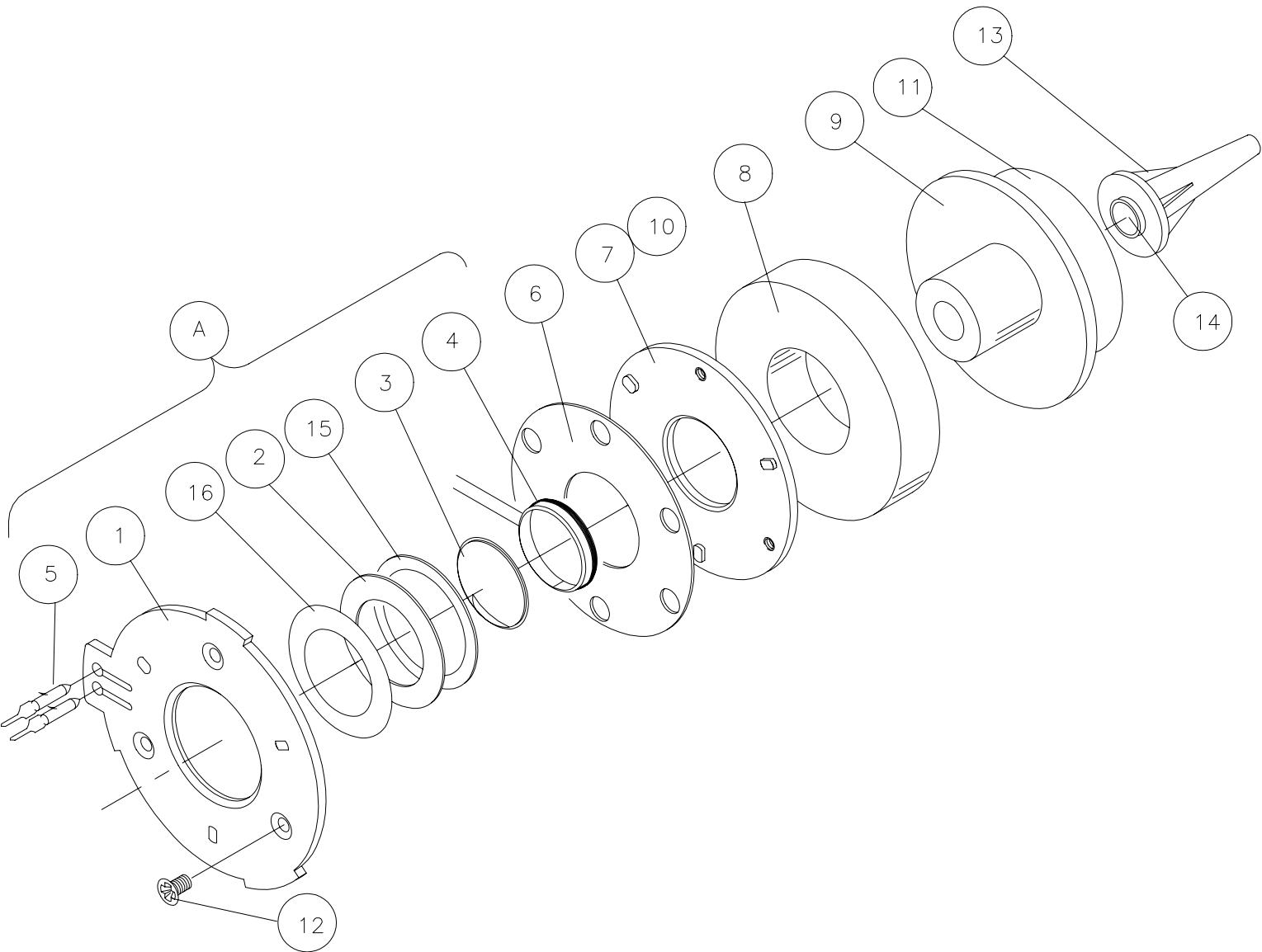
PART NO.

ZZ12688

COPYRIGHT © 2000

DATE 20-10-00

DRAWN KW



5

TWEETER TUBE PLUG REMOVED

684

7-11-02

ISSUE

AMENDMENT

ECN No.

DATE

APPROVAL



TITLE

HF GENERAL ASSEMBLY

DRG. NO.

A 4809-2 -2

ISS

5

COPYRIGHT © 2000

DATE 20-10-00

DRAWN KW

PART NO.

ZZ12688

ITEM	QTY	CODE NO.	DESCRIPTION	DRG NO.
		ZZ12688	COMPLETE ASSEMBLY	A4809
A		ZC12688	Diaphragm mounting plate ass'y	
1	1	MM01295	Diaphragm mounting plate	B3919
2	1	SS08052	Suspension	A3650
3	1	DD01244	Dome metal	A3586
4	1	ZV01189	Coil assembly	ZV01189
5	2	PP02119	Terminal pin male solder	
6	1	GG06645	Gasket magnet to diaphragm	A1599
7	1	PP00655	Front plate	A1289
8	1	MM00051	Magnet ceramic	A1508
9	1	PP12088	Back plate/pole piece	A3883
10	1	AA05320	Ferrofluid	
11	1	LL03000	Label	
12	3	HH01384	Screw	A2072
13	1	HH12386	Tube Tweeter	A3983
14	A/R	BB05444	Baff	A4180
15	1	PP13013	Spacer Ring	A4198
16	1	AA05940	Adhesive disc	A4942
17				

5

TWEETER TUBE PLUG REMOVED

684

7-11-02

ISSUE

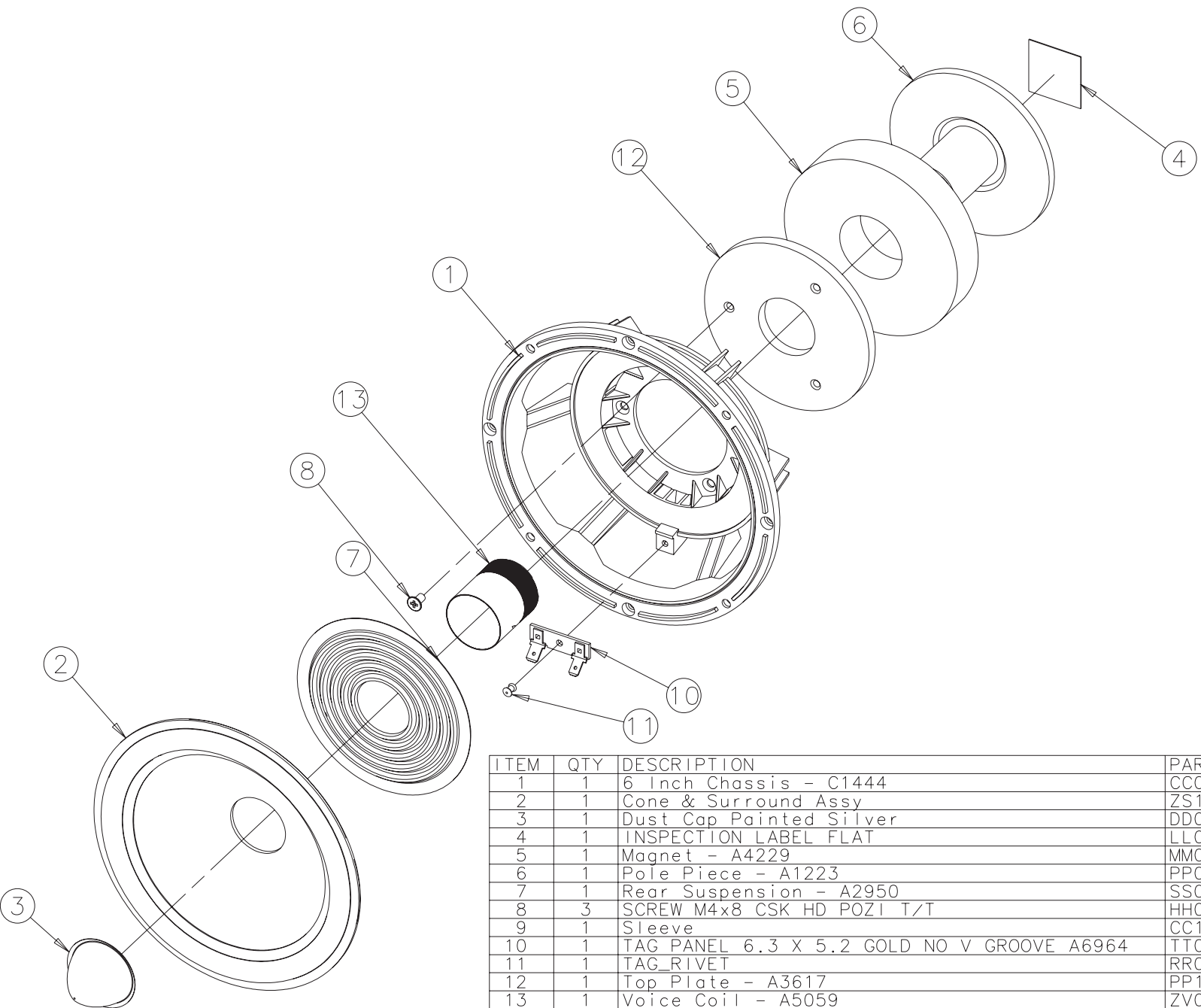
AMENDMENT

ECN No.

DATE

APPROVAL

NOTE: SHEET 2-2 NOT USED



ITEM	QTY	DESCRIPTION	PART
1	1	6 Inch Chassis - C1444	CC05657
2	1	Cone & Surround Assy	ZS10669
3	1	Dust Cap Painted Silver	DD04693
4	1	INSPECTION LABEL FLAT	LL03000
5	1	Magnet - A4229	MM00884
6	1	Pole Piece - A1223	PP00981
7	1	Rear Suspension - A2950	SS06386
8	3	SCREW M4x8 CSK HD POZI T/T	HH01928
9	1	Sleeve	CC11304
10	1	TAG PANEL 6.3 X 5.2 GOLD NO V GROOVE A6964	TT07765
11	1	TAG_RIVET	RR00213
12	1	Top Plate - A3617	PP10919
13	1	Voice Coil - A5059	ZV01279

B&W

TITLE

BASS UNIT GENERAL ASSY

DRG. NO.

A4470-1 -2

ISS

3

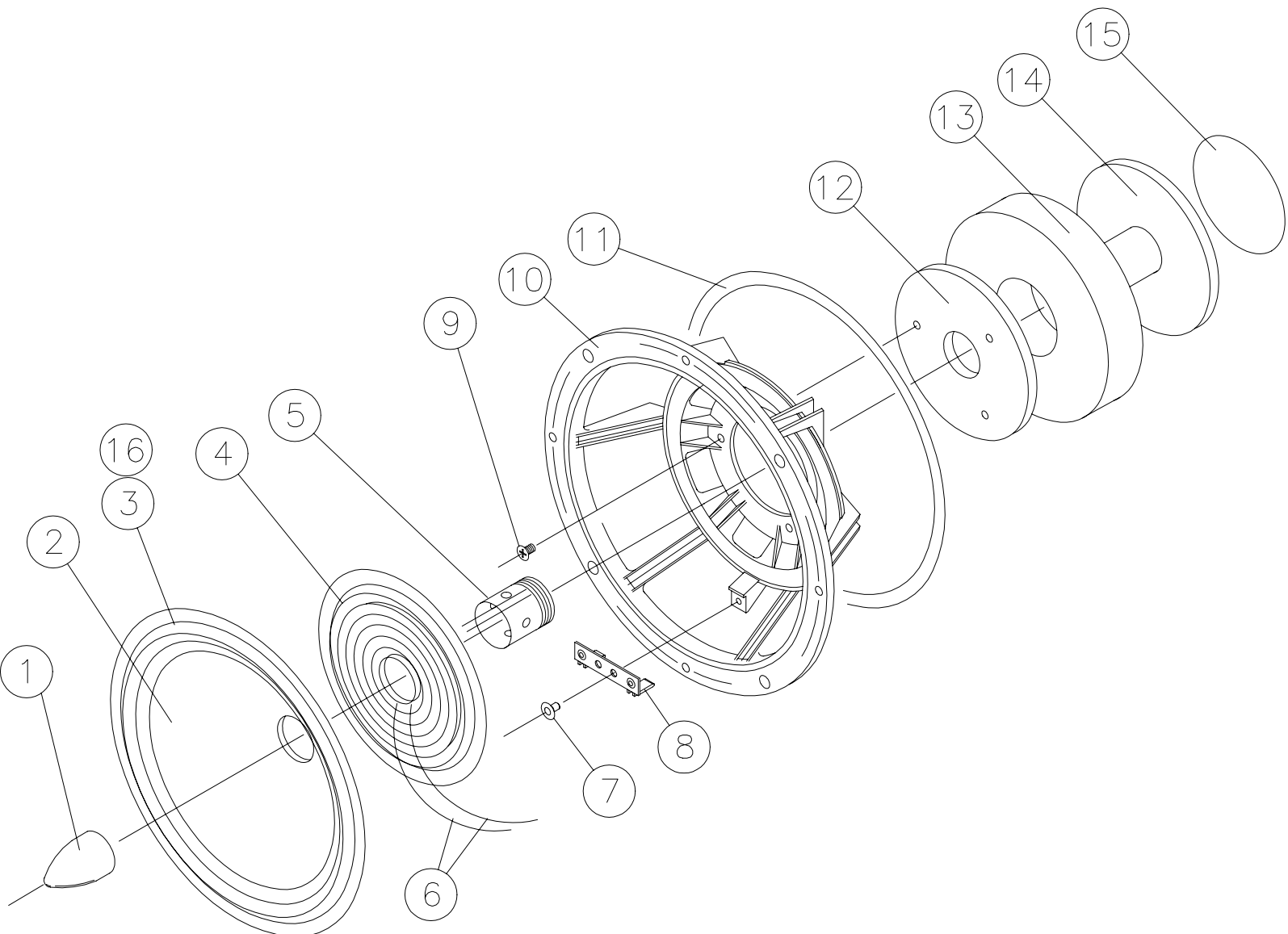
PART NO.

ZZ12246

COPYRIGHT © 1999

DATE 30/09/99

DRAWN KW



3

SEE SHEET 2

AMENDMENT

ECN No.

DATE

APPROVAL



TITLE

## BASS UNIT PARTS LIST

DRG. NO.

A 4470-2 -2

ISS

3

COPYRIGHT © 1999

DATE 30/09/99

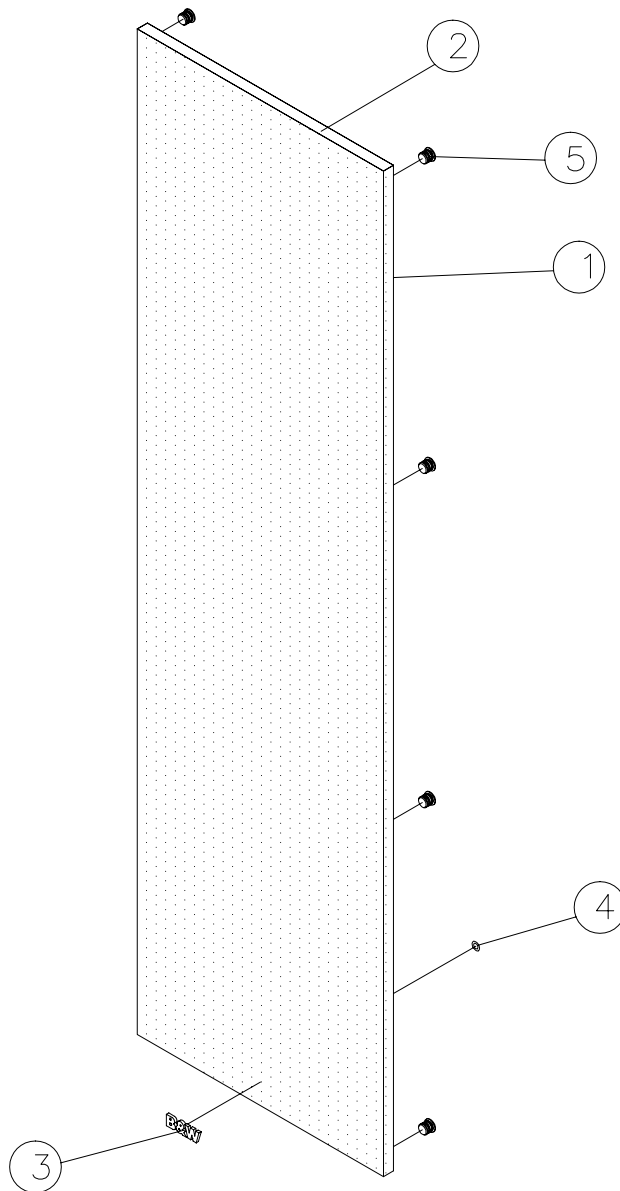
DRAWN KW

PART NO.

ZZ12246

No.	QTY.	CODE	DESCRIPTION		DRG No.
		ZZ12246	Complete Assembly		A4470
1	1	DD04286	Dust Cap		A4534
2	1	CC11096	Cone	ZS10677	A4528
3	1	SS09687	Surround		A1804
4	1	SS06386	Rear Suspension		A2950
5	1	ZV01104	Coil Assembly		ZV01104
6	2	TT06475	Tinsels		
7	1	RR00213	Pop Rivet		
8	1	TT07765	Tag Panel		A3599
9	3	HH01928	Screw CSK HD Pozi M4 x 8		
10	1	CC05657	Chassis		C1444
11	1	GG00396	Gasket		A1448
12	1	PP00549	Front Plate		A1223
13	1	MM00884	Magnet		A4229
14	1	PP14052	Back Plate/Pole Piece		A4646
15	1	LL03000	Label		
16	1	RR06872	Card Ring		A4788

3	TT07765 WAS TT07715	ECR1681	5.4.05	MB
ISSUE	AMENDMENT	ECN No.	DATE	APPROVAL



ITEM	QTY	Code No	DESCRIPTION	Drg No
		ZG01295	Complete Ass'y	A4464
1	1	GG06386	Grille Fret	C4637
2		FF00612	Grille Cloth	
3	1	BB04235	Badge	A2924
4	1	FF00566	Fastener	
5	8	GG06369	Fixing Grommet	A4423





TITLE  
CM4 LLF/ULF/HF X-OVER PCB

DRG. NO.

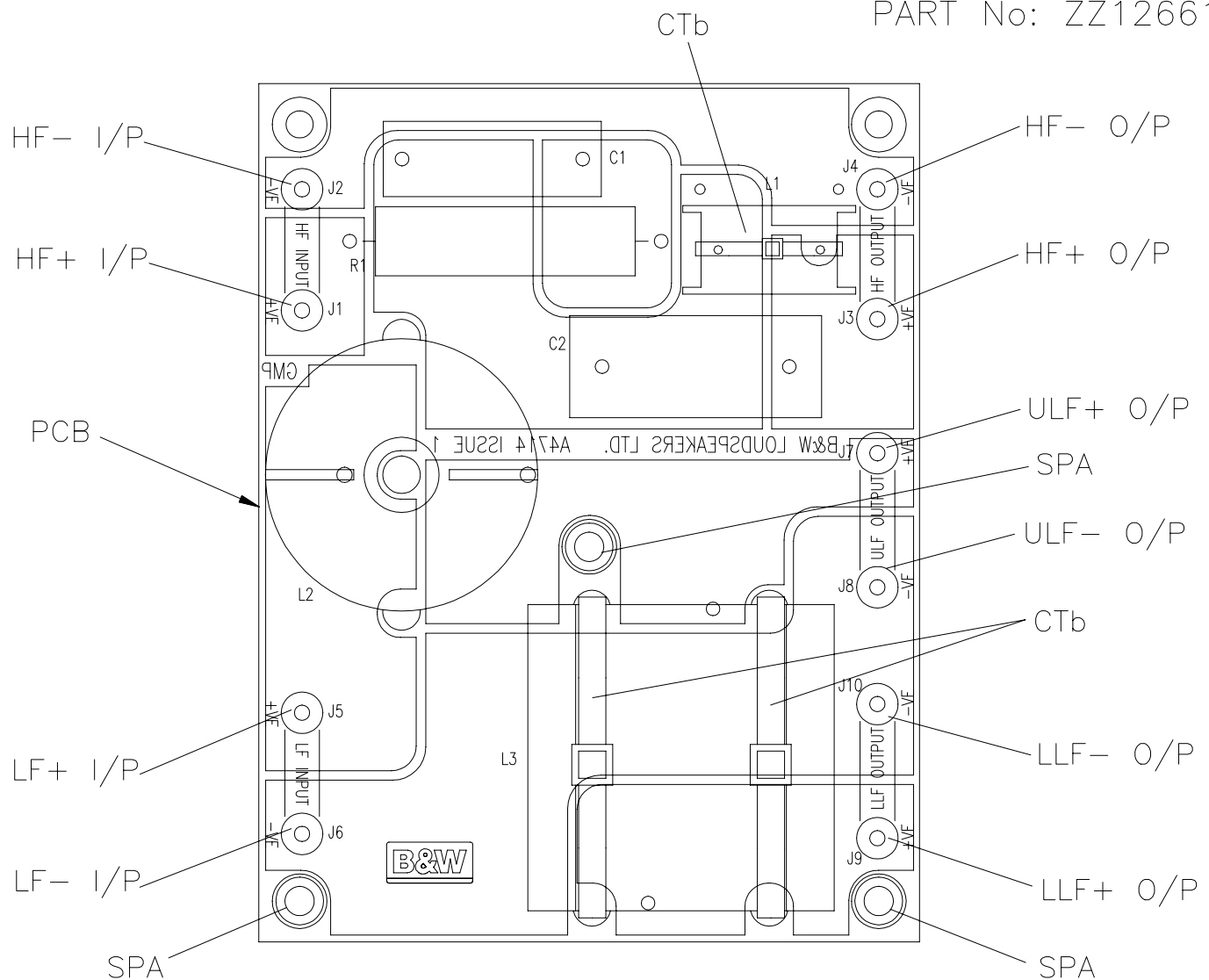
ISS

A4715-1 -1

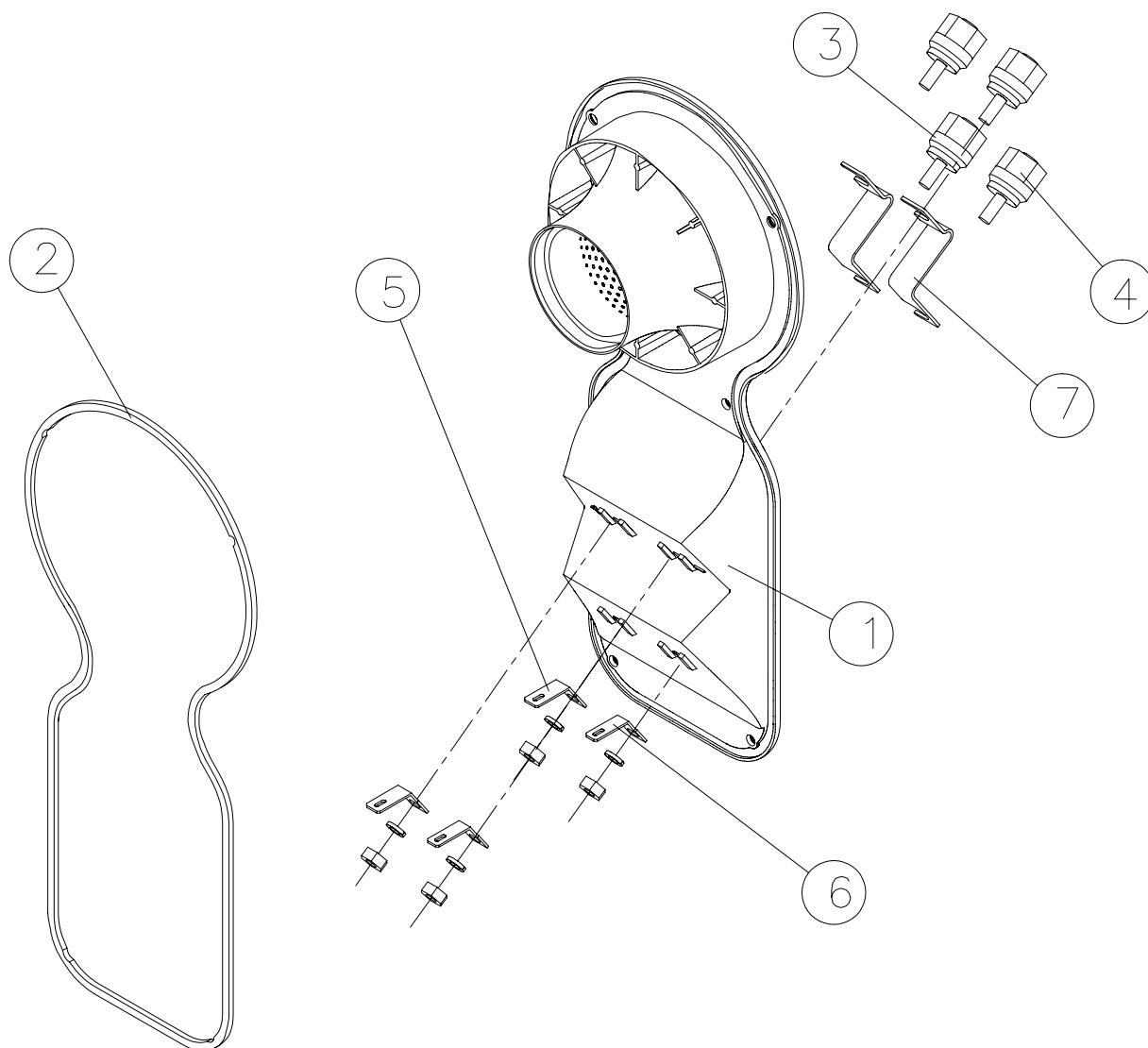
2

COPYRIGHT © 2000 DATE 06/07/00 DRAWN GMP

PART No: ZZ12661



ITEM	CODE NO	COMPONENT	VALUE	REMARKS
	ZZ12661	COMPLETE ASSEMBLY		DRG NO A4693
R1	RR06793	RESISTOR	0R22	7W WIREWOUND
C1	CC11525	CAPACITOR	4u7	100V POLYESTER
C2	CC11533	CAPACITOR	10uF	100V POLYESTER
L1	ZL02518	INDUCTOR	0.07mH	0.45mm WIRE, AIR CORE.
L2	ZL02534	INDUCTOR	0.5mH	1.2mm WIRE, AIR CORE.
L3	ZL02542	INDUCTOR	10.0mH	0.9mm WIRE, WICON.
SPA	HH10227	SPACER	M4	3 OFF (RICHCO SRS8-4-01)
CTa	CC06513	CABLE TIE	LARGE	2 OFF
CTb		CABLE TIE	SMALL	1 OFF
HAR	ZX06912	HARNESS		DRG NO A4716
PCB	CC11487			PRINTED CIRCUIT BOARD DRG NO A4714



NO.	Qty.	Code No.	Description	Drg. No.
		ZT00620	Complete Assembly	A5102
1	1	TT07250	Terminal Tray/Port Facia	C4992
2	1	GG06491	Gasket	A4615
3	2	TT07153	Red Terminal Kit	A4049
4	2	TT07161	Black Terminal Kit	A4049
5	2	TT07110	6.3 Terminal Tag	
6	2	TT07129	5.2 Terminal Tag	
7	2	TT07048	Terminal Link	A4661



TITLE  
CM4 LLF/ULF/HF HARNESS.

DRG. NO.

A4716-1 -1

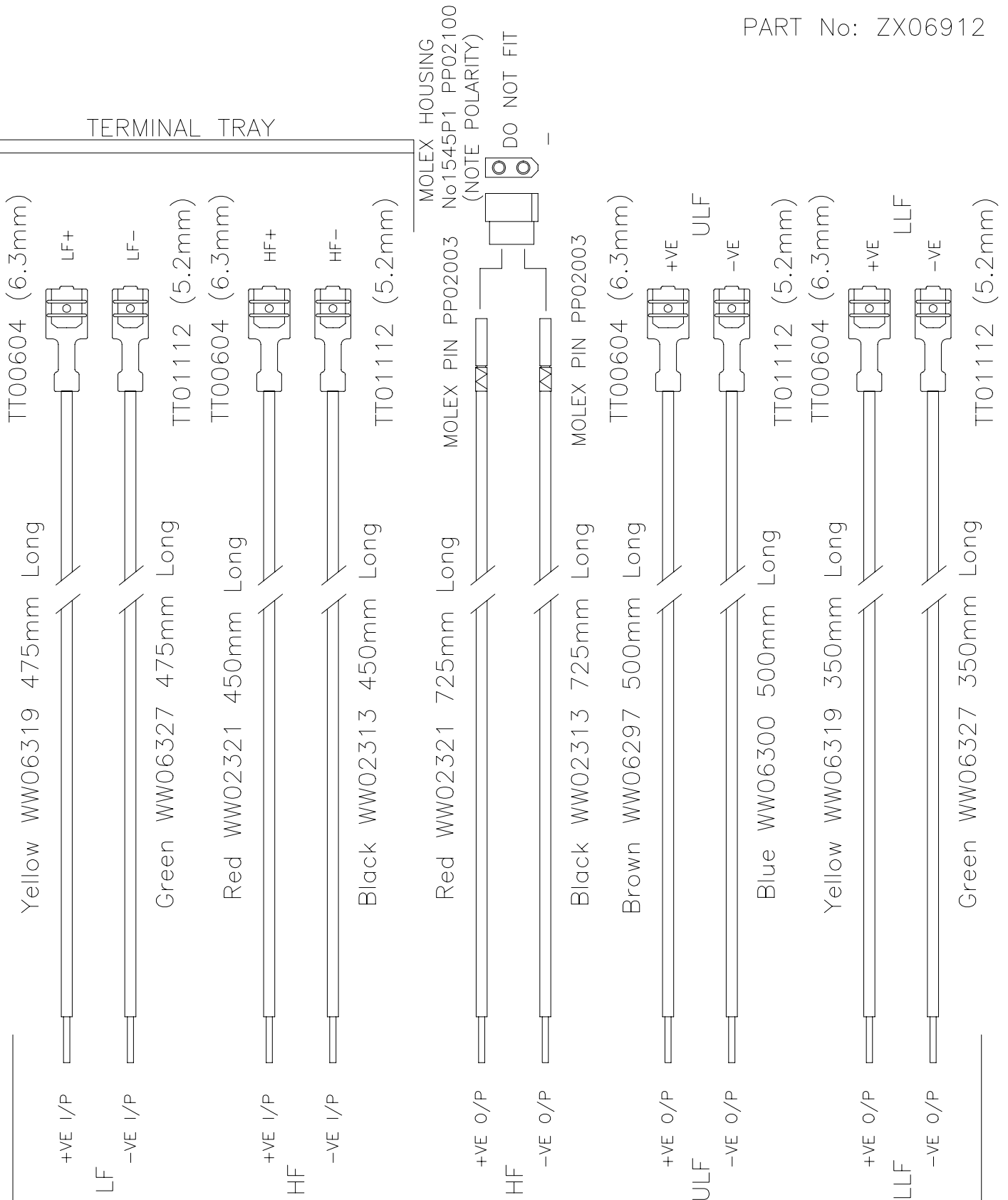
ISS

3

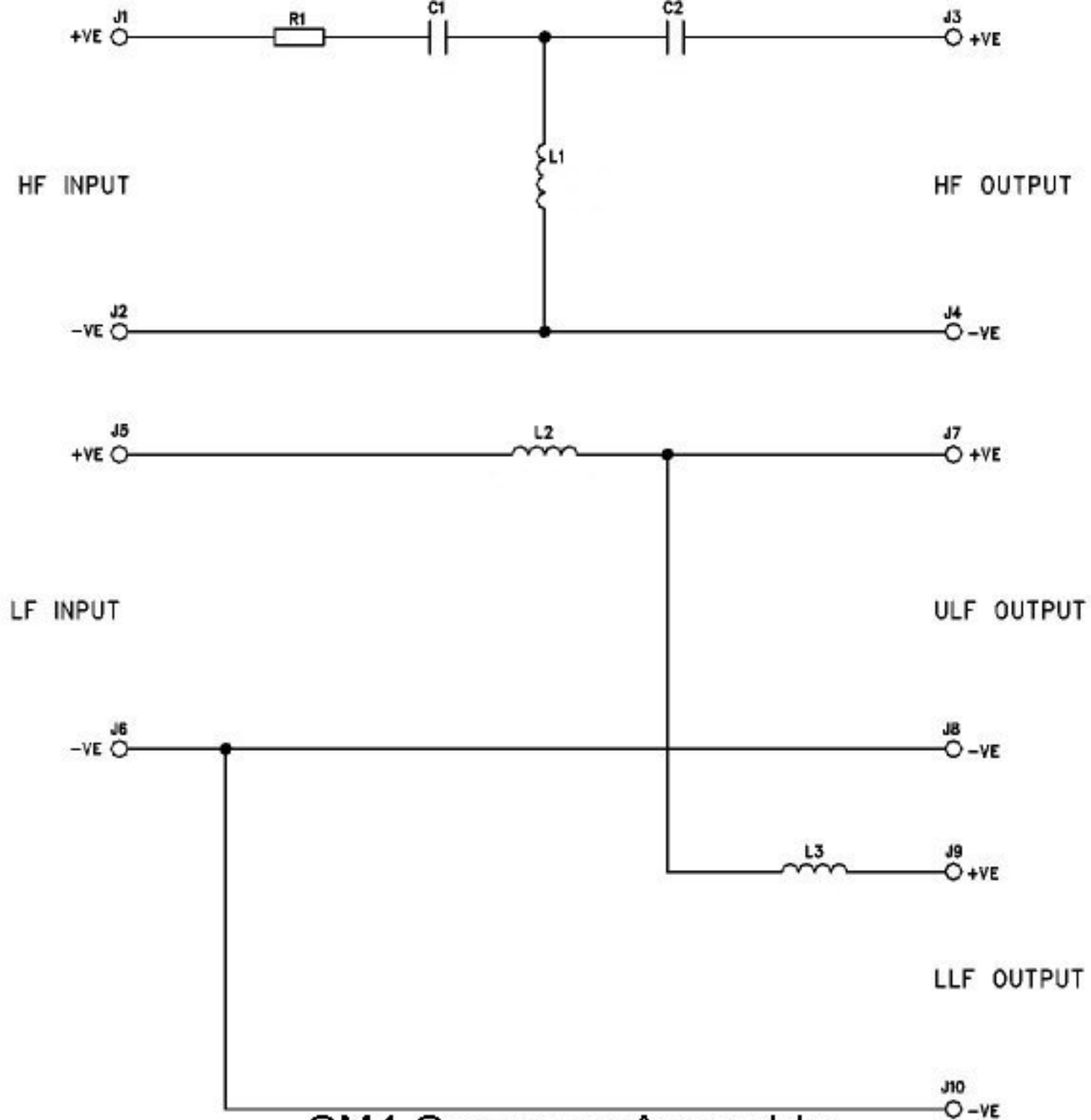
COPYRIGHT © 2000 DATE 06/07/00 DRAWN GMP

PART No: ZX06912

TERMINAL TRAY



LLF/ULF/HF CROSSOVER PCB



CM4 Crossover Assembly