

TN Release of the EXPHYE64 PIF card

Apogee Prepress

Urgency	Classification	Scope	
Immediately	Mandatory - for affected systems	Other	###

Table of Contents

1.Introduction.....	2
2.Detailed information	2
3.ABC code and Spare part number:	2
3.1.Components of the box:.....	2
3.2.Supported Apogee Prepress versions.....	2
3.3.Affected output devices	2
4.Replacement of existing EXP64E-PC-PIF card with EXPHYE64 PIF card on Apogee Prepress 5.0 /6.0	3
5.New install of Apogee Prepress 6.0 /7.0 with new EXPHYE64 PIF card.....	5
6.Verifying and updating the EXPHYE64 PIF firmware	7
6.1.Verifying the firmware version.....	7
6.2.Changing the operation mode of the EXPHYE64 PIF card.	7
6.3.Updating the firmware	8
7.Updating the FPGA version from 2.1 to 2.2.....	9
8.Diagnostic tool: Diag.exe	10
9.Clamp the PIF cable to the computer	10

Document Version	Changes
1.0	Creation
1.1	Updated screenshot, problem with the hyperlinks is now resolved.
2.0	New version from the FPGA software (2.2) this version addresses a problem which can result in windows blue screen.
3.0	Added ABC code and spare part number
4.0 Aug- 2011	Added information about Apogee Prepress 7.1

1. Introduction

This document describes the introduction of the new EXPHYE64 PIF card.

The EXPHYE card is the successor of the EXP64E-PC-PIF card.

2. Detailed information

Some of the EXPHYE64 PIF cards are shipped with an obsolete driver and FPGA firmware. This technote provides the required information to verify and update the firmware. It also provides the instructions to install the card.

3. ABC code and Spare part number:

ABC Code: E963H (new installation Card and PIF cable)

Spare part number: DN+100215182V10 (replacements EXPHYE64 PIF Card ONLY)

3.1. Components of the box:

- EXPHYE64 PIFE Card : New PCI-Express PIF Card
- Standard Cable (8m) (Same as previous Cable.)
- POWER supply CABLE for 5V (same as previous EXP64 Card.)
- Insulation locks for clamping PIF cable.
- EU Declaration of Conformity

WARNING: Do not use the CD provided with the card. Please always use driver and firmware provided and tested by Agfa HQ, see next chapter.

We cannot support systems that work with drivers and firmware other than the ones tested and approved by Agfa HQ.

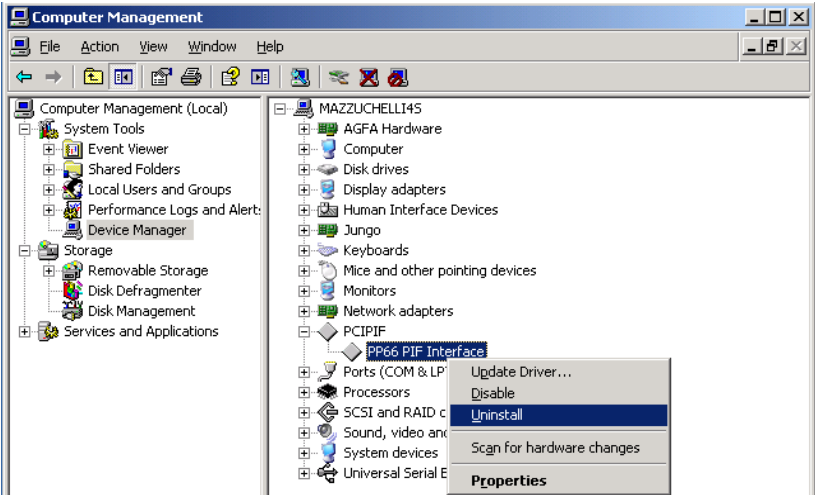
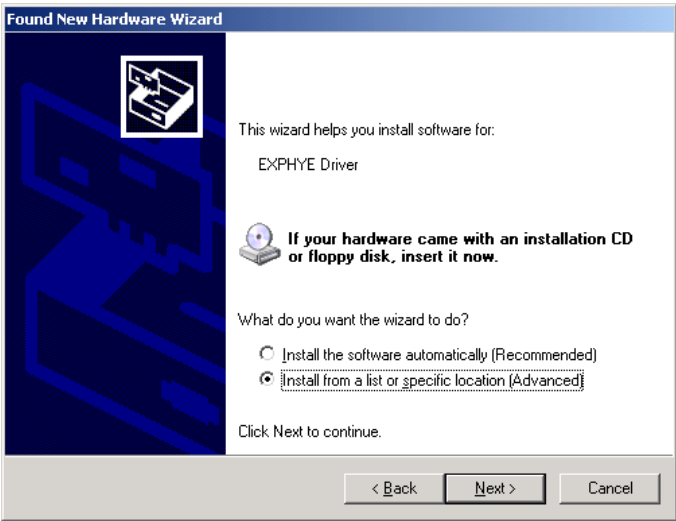
3.2. Supported Apogee Prepress versions.

Apogee Prepress Version	Remarks
Apogee Prepress 5.0/6.0 and 7.0	Download driver and diagnostic tools from the service library and follow the ReadMeFirst instructions included within the compressed file: Driver download: (click here) Tools download: (click here)
Apogee Prepress 7.0	Driver and tools are installed by the Apogee Prepress 7.0.0 installer. (Important the FPGA version on the Apogee Prepress DVD is 2.1, please use the links here above to become the right version.
Apogee Prepress 7.0 - SP1	After running the App7.0.0_SP1_FC1, via the Sum, the latest version from the FPGA software is copied in "Supportfiles\DriverTools\EXPHYE64 Tool\ROM_Upper".

3.3. Affected output devices

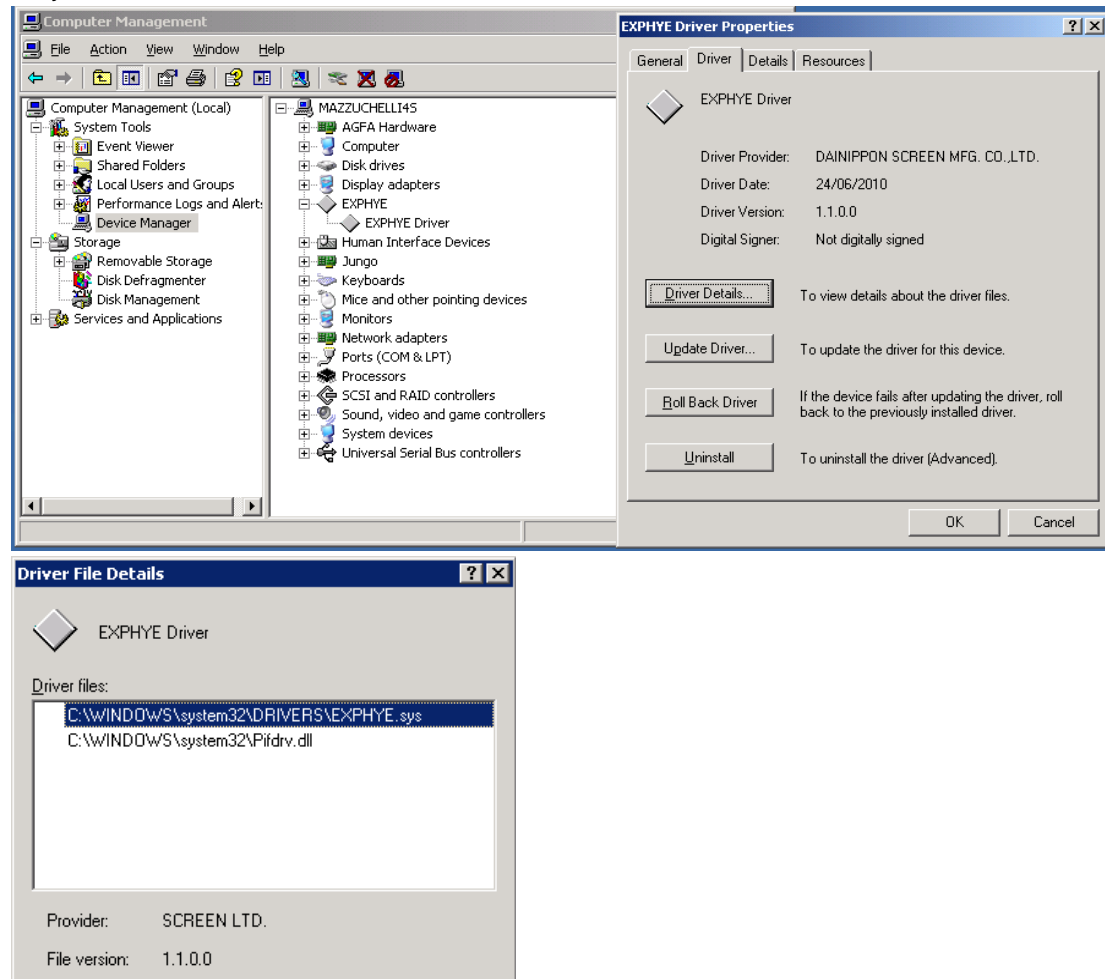
All PIF connected output devices of the :Avanxis, :Avalon, :PalladioII, :Acento and :AcentoLF series that have been released in the past.

4. Replacement of existing EXP64E-PC-PIF card with EXPHYE64 PIF card on Apogee Prepress 5.0 /6.0

Step	Action
1	Make sure that you have downloaded the EXPHYE64 PIF driver and driver tools from the Services library as documented in the chapter "2.2. Supported Apogee Prepress versions".
2	Shutdown Apogee Prepress, shutdown your output device and remove the PIF cable from the computer.
3	Open the Device Manager (context-click My Computer and select Manage).
4	Context-click the PP66 PIF Interface in the PCIPIF setup and select Uninstall. 
5	Shutdown the computer after uninstalling the driver.
6	Remove the power cable and wait 10 seconds before opening the PC cover to remove the EXP64E-PC-PIF card.
7	Insert the new EXPHYE64 PIF card, attach the power cable and start the computer.
8	The Windows hardware wizard will pop up. Select "No, not this time" and click "Next" on the first wizard dialog screen.
9	Select "Install from a list or specify location (Advanced)" to locate the driver of the EXPHYE64 PIF card. 
10	Browse to the location of the EXPHYE64 PIF driver: Supportfiles\Drivers\EXPHYE_CONFIG\Driver and start the installation.

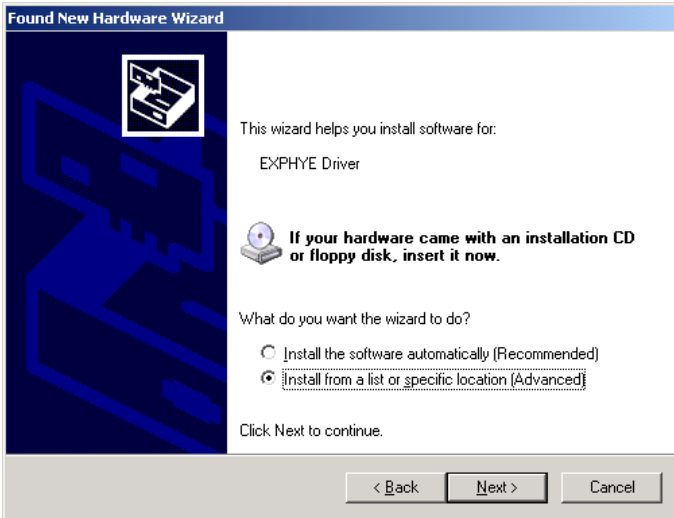
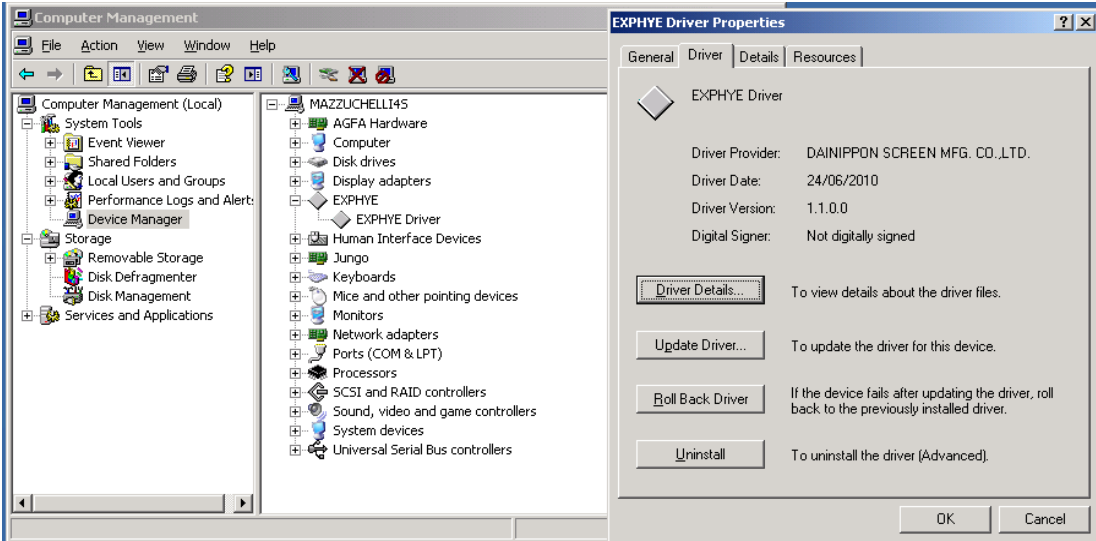
11

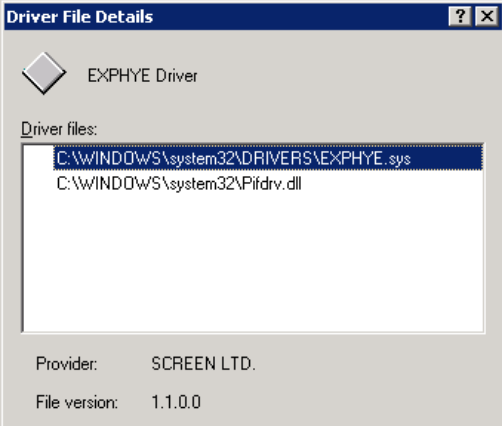
Verify if the correct version of the driver is installed. Driver version should be 1.1.0.0.

**12**

Verify (and update) the current EXPHYE64 PIF firmware (refer to chapter 6. ("Verifying and updating the EXPHYE64 PIF firmware").

5. New install of Apogee Prepress 6.0 /7.0 with new EXPHYE64 PIF card.

Step	Action
1	Apogee Prepress 6.0 only: Make sure that you have downloaded the EXPHYE64 PIF driver and driver tools from the Services library as documented in the chapter "2.2. Supported Apogee Prepress versions".
2	Install Apogee Prepress 6.0 or 7.0.
3	After installation, shutdown Apogee Prepress, shutdown the computer, remove the power cable and wait 10 seconds before opening the computer to insert the EXPHYE64 PIF card.
4	Apogee Prepress 7.0: the correct driver is automatically loaded. Apogee Prepress 6.0 need to follow procedure below (not numbered steps).
	The Windows hardware wizard will pop up. Select "No, not this time" and click "Next" on the first wizard dialog screen.
	Select "Install from a list or specify location (Advanced)" to locate the driver of the EXPHYE64 PIF card.
	
	Browse to the location of the EXPHYE64 PIF driver: Supportfiles\Drivers\EXPHYE_CONFIG\Driver and start the installation.
	Verify if the correct version of the driver is installed. Driver version should be 1.1.0.0.
	

	 <p>Driver File Details</p> <p>EXPHYE Driver</p> <p>Driver files:</p> <ul style="list-style-type: none">C:\WINDOWS\system32\DRIVERS\EXPHYE.sysC:\WINDOWS\system32\Pifdrv.dll <p>Provider: SCREEN LTD.</p> <p>File version: 1.1.0.0</p>
5	Verify (and update) the current EXPHYE64 PIF firmware (refer to chapter 6. ("Verifying and updating the EXPHYE64 PIF firmware").

6. Verifying and updating the EXPHYE64 PIF firmware

This chapter describes how to verify and update the firmware version.

6.1. Verifying the firmware version.

Start the ConfigFPGARom.exe in

“Supportfiles\DriverTools\EXPHYE64 Tool\ROM_Upper”.

The version number shown on the left (of the arrow) is the current FPGA firmware version (2.0 OR 2.1). The version on the right (of the arrow) is the version to which you can upgrade (2.2).

Cards with firmware version 2.0 OR 2.1 must be updated to version 2.2
The update procedure is described in the next chapters.



WARNING: The operation mode of the EXPHYE64 PIF card should be set to image mode (which is the factory default setting) in order to be able to verify the firmware version as described. For changing the operation mode, please see section 5.2 below.

6.2. Changing the operation mode of the EXPHYE64 PIF card.

WARNING: Always shut down the system & unplug the power cable before changing the operation mode.

The EXPHYE64 PIF card must be set in Configuration mode before updating the firmware.

The EXPHYE64 PIF card must be set in Image mode for regular output/image operation.

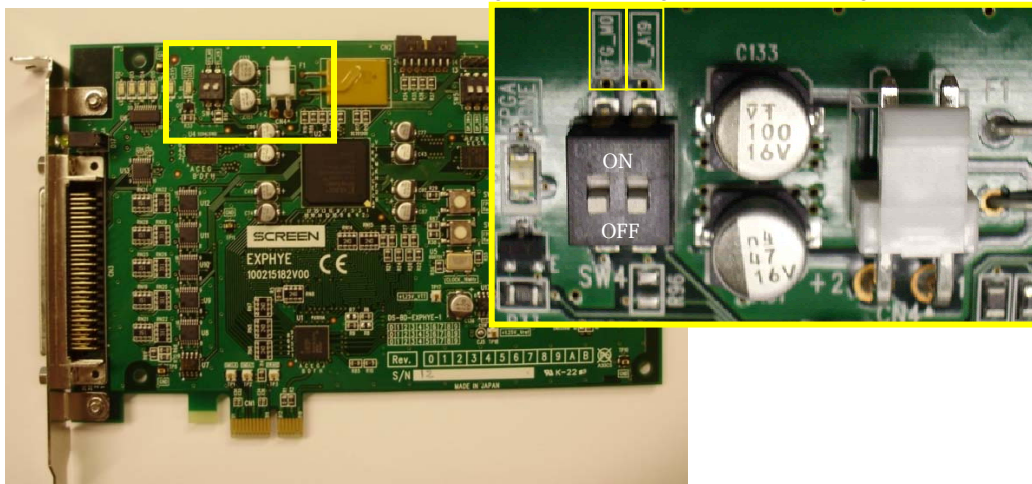


Figure 1: Image mode - CFG_MO: OFF and FL_A19: OFF

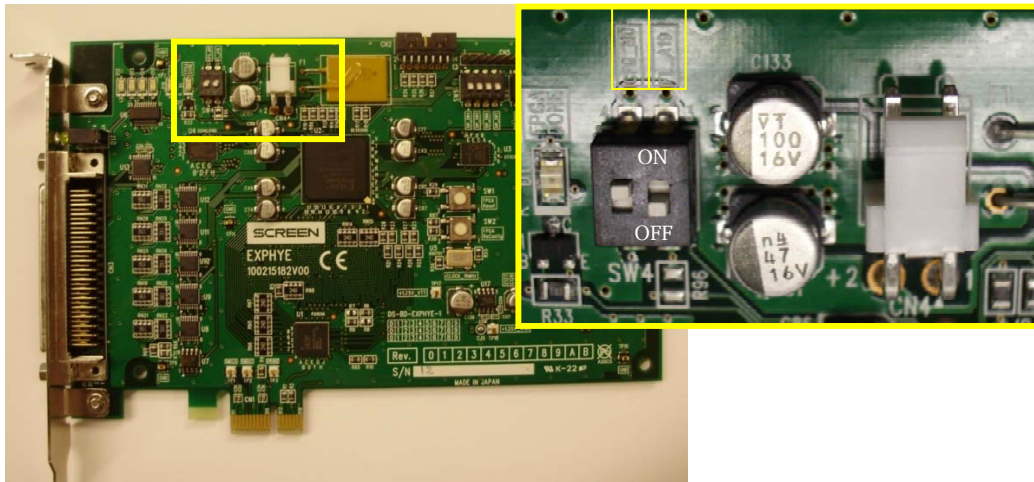
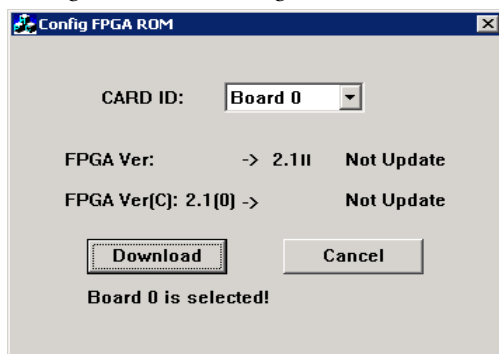


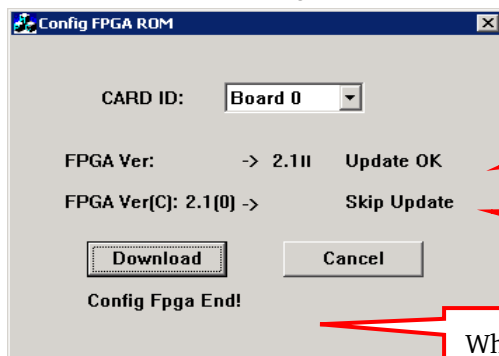
Figure 2: Configuration mode - CFG_MO: ON and FL_A19: OFF

6.3. Updating the firmware

Start the ConfigFPGARom.exe tool from the "Supportfiles\DriverTools\EXPHYE64 PIF Tool" folder after setting the card in configuration mode.



Click the "Download button" to start the update. The "Board 1 is selected" text at the bottom will change to "Erase" and "Flash Writing".



"Update OK" indicates that the update was successful.

This area always displays "Skip Update" at the end of the update.

When the update is completed "Config Fpga End!" is shown.

The card is now updated with the 2.2 FPGA firmware.

Display	Explanation	Remarks
Not update	FPGA is not updated	
Update OK	Update Successful	
Update NG	Update has failed	The EXPHYE card is defective
Skip update	Update is skipped	

WARNING: Do not forget to set your card back to Image mode before you can start imaging/output plates.

7. Upgrading the FPGA version from 2.1 to 2.2.

We have discovered a problem with the EXPHYE PIF card which can result in a windows blue screen (BSOD). A new version of the FPGA firmware (2.2) resolves this problem.

THIS IS A MANDATORY PROCEDURE!

We advise you to install the upgrade on the next service intervention or when the problem is reported by the customer.

Step	Action
1	Download the firmware from the location on page 2 OR browse to the "Supportfiles\DriverTools\EXPHYE64 PIF Tool" (depend on which version of Apogee Prepress you have)
2	Replace the old firmware 2.1 with the 2.2 version
3	Verify the firmware version (in this scenario it should be 2.1. (see 5.1)
4	Change the operation mode of the EXPHYE PIF card from image mode to configuration mode (see 5.2)
5	Update the firmware to version 2.2 (see 5.3)
6	Run the diag test to verify if update succeeded (see page 10)

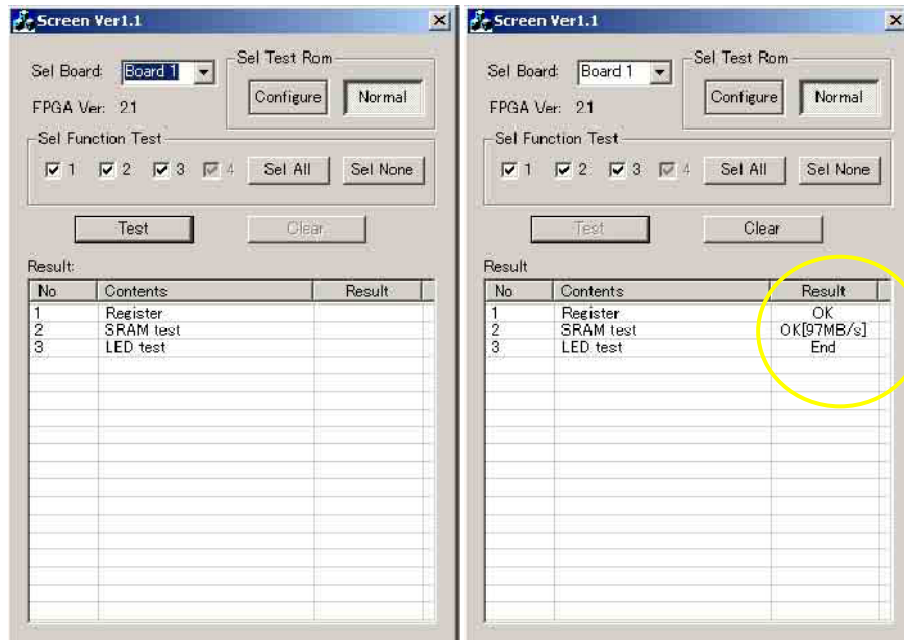
CAUTION: This procedure is only necessary if the EXPHYE already has been installed with version 2.1.

8. Diagnostic tool: Diag.exe

This tool is a self-diagnostic tool to check if there is any problem with the card.

The card must be set in the Image Mode before you can run this procedure.

Launch Diag.exe from the "Supportfiles\DriverTools\EXPHYE64 PIF Tool\ Maintenance_Tool" folder.



Click the "Test" button without changing the settings.

Self-diagnosis will be started and if "End" is displayed in the Result of "3. LED test", the card has passed successfully the test.

9. Clamp the PIF cable to the computer

The cable must be clamped to the fan guard on the back side of the computer in order to prevent a loose connection.

